

Historic, Archive Document

Do not assume content reflects current scientific knowledge, policies, or practices.

62.67

SPRING HILL

NURSERIES

TIPP CITY OHIO

LIBRARY
FEB 11 1944
U. S. Department of Agriculture

SPRING
1944



NEW EVERBLOOMING ROSE
POINTSETTA \$1.60 each

See Description
Page 56



What, When, Where and How to Plant

**CHOICE
HARDY**

CHRYSANTHEMUMS

**LARGE
EXHIBITION**

COMPLETE PLANTING INSTRUCTIONS MAILED FREE WITH EACH ORDER OF \$1.00 OR MORE.



CHRYSANTHEMUM BRONZE QUEEN



CHRYSANTHEMUM GOLDEN GLOW



Famous Cushion Chrysanthemums

LOW AS

17½¢

In Lots of 12

All The
New Colors



Choice Hardy Large Exhibition ← CHRYSANTHEMUMS

PLANT NOW—Enjoy beautiful blooms this Fall
CERISE KING Catalog No. 1S4A500—New immense, dark satiny-red. Highly recommended.

PINK SUPREME Catalog No. 1S4A502—Extra large, early flowering beautiful, soft, clear pink.

BRONZE QUEEN Catalog No. 1S4A501—Giant sized, well formed flowers of Autumn colors.

GIANT PEARL Catalog No. 1S4A503—Perfect petal arrangement, mammoth size. Very popular, hardy and vigorous.

GOLDEN GLOW Catalog No. 1S4A504—Early profuse flowering with large bright yellow blooms.

All above mums guaranteed new early flowering, hardy and vigorous perfectly formed Giant Exhibition flowering varieties. Your choice above mums alike or assorted. 25¢ each; 3 for 70¢; 5 for 98¢.

25¢
EACH



Pink Supreme

5 for 98¢

FAMOUS CUSHION CHRYSANTHEMUMS

NEW AZALEA or CUSHION CHRYSANTHEMUMS

Enjoy the new, early flowering varieties. Improved colors on more vigorous free flowering strains. SPRING HILL'S strong 2 in. pot plants will produce and bloom like opposite picture this fall.

CHAMPION CUSHION Lovely deep coral bronze with soft salmon shadings. A very popular variety. Perfect mounds covered completely, filled with flowers in early autumn. Catalog number 1S4A518, 40¢ each; 3 for \$1.00.

LITTLE BOB A lovely new English variety, different and better than most cushion type mums. Perfectly symmetrical mound filled with perfectly formed large button type, rich mahogany flower. Beautiful and different. Catalog number 1S4A512, 35¢ each; 3 for 90¢.

SANTA CLAUS A taller, more vigorous grower than most varieties. Exceedingly hardy with large fiery coral blooms with copper shadings. Catalog number 1S4A517, 40¢ each; 3 for \$1.00.

MAJOR CUSHION Considered the most beautiful cushion. Bright salmon-pink full petaled forms perfectly formed flowers on strong growing neat symmetrical plants. Catalog number 1S4A513, 40¢ each; 3 for \$1.00.

MARJORIE MILLS Deep crimson and chestnut with varying rosy shadings. The medium sized mound shaped plants begin flowering in early September, unsurpassed for borders. Catalog number 1S4A514, 45¢ each; 3 for \$1.15.

LAVENDER LASSIE A miniature lavender lady. Amazing in its profusion. Blooms same color and almost as large as Lavender Lady. In full flower early September. The dense mound-like plants often 2 ft. tall, 3 ft. across, simply covered with double flowers 2 inches in diameter. Catalog number 1S4A511, 35¢ each; 3 for 90¢.

COMMANDER CUSHION A new well formed variety bearing flowers earlier than older kinds. Flowers amaranth with crimson shadings. Worthwhile and the best new red cushion chrysanthemum. Catalog number 1S4A509, 35¢ each; 3 for 90¢.

HARVEST GOLD CUSHION New sulphur yellow cushion mum, quickly develops into a compact mound shaped plant filled with double clear bright yellow blooms. Catalog number 1S4A510, 35¢ each; 3 for 90¢.

BUTTON MUMS

Catalog No. 1S4A507

Tiny compact perfect shaped double flowers in large clusters. The great profusion of flowers are unexcelled for cutting and color in your garden. CHOICE OF: RED, BRONZE, GOLD, PINK AND WHITE. 25¢ each; 3 for 70¢; 5 for 98¢.

DAISY MUMS

Catalog No. 1S4A506

Famous for abundance of flowers, unexcelled for cutting and garden. Extra hardy and easy to grow. Giant daisy like flowers. Your choice, crimson, apricot, pink, white and bronze. 3 for 70¢; 5 for 98¢.

25¢
EACH

SAVE 35% — ORDER BY COLOR!

FAMOUS CUSHION OR AZALEA MUMS

PINK CUSHION—Clouds of cameo-pink flowers.

WHITE CUSHION—Pure white as flower develops.

BRONZE CUSHION—Large, double flowers of coral bronze.

NEW GOLD CUSHION—Surpasses other golden cushion mums.

RED CUSHION—Brilliant extra large clear Indian red.

Catalog No. 1S4A508

25c each; 12 for \$2.10

5 for 98¢

Three Convenient Ways To Buy At Spring Hill

- 1. MAIL YOUR ORDER.** It's easy, interesting and economical. Order blanks page 8 and 48, state catalogue number, size and price. (Specify date you wish order shipped.)
- 2. TELEPHONE YOUR ORDER** (Tipp City 2491). For your convenience there will be an experienced salesman to answer your call from 9:00 A. M. to 4:00 P. M.
- 3. SHOP AT OUR SALES BARN,** Ohio's largest sales barn (see picture below). Choice of thousands of plants under roof, no disagreeable weather or mud. Plan trips with your neighbors or friends.



FREE VALUABLE PLANTING GUIDE WITH EACH ORDER OF \$1.00 OR MORE.



MAIL YOUR ORDERS NOW WE SHIP AT PROPER TIME

NOTICE

Nursery stock or plants ordered to be shipped by parcel post PLEASE ADD 10% FOR PACKING AND POSTAGE. This enables us to give our customers the lowest possible selling price for 1st class government inspected stock. If you live on a rural route we will if requested send your order by parcel post and bill you for the postage; most orders of \$3.00 will be shipped by express. If you do not include postage for delivery charges your order will be shipped express collect or if requested we will bill you for parcel post.

PAYMENT

Our terms are cash with order, money should be sent by check, postal money order, draft, express money order or registered mail. (Remember all C. O. D. shipments cost more.)

WAR STAMPS ACCEPTED

MAIL WAR TAMPMS in payment for your plant order from Spring Hill. Many feel the importance of necessity in purchasing war stamps. Spring Hill will accept War Stamps for payment of your order, in that way Uncle Sam will have the money; YOU HAVE the plants; we have the stamps which will be turned into War Bonds. Spend your money where it will do the most good.

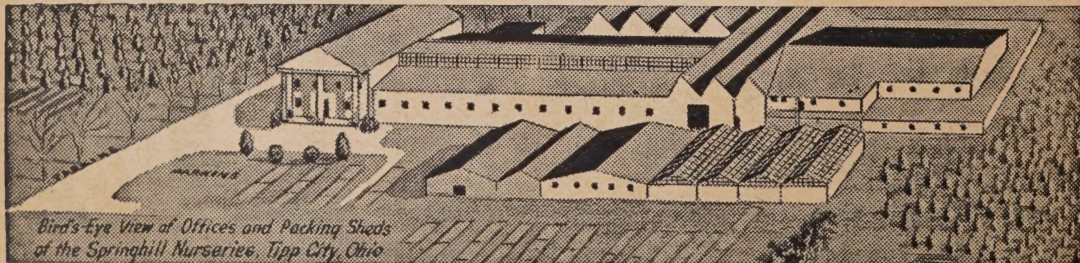


GUARANTEE

SAFEGUARD TO YOU AN ASSET TO US

FIRST: We guarantee all our stock to be true to name, good, healthy, and first class. Even with the high quality of Spring Hill's stock, success depends largely upon soil, proper planting, weather conditions, etc., which are beyond our control. Nevertheless, we will replace stock at half the purchase price if the complaint is made by September first of the same year the stock is shipped. It is mutually agreed that at no time will we be held responsible for a greater amount than the original purchase price.

SECOND: We guarantee our merchandise to be in good growing condition when received. Complaints should be made immediately on receipt of stock. Our success depends upon your patronage and it is our sincere desire to please. We urge you to write us if you are dissatisfied in any way, as we GUARANTEE SATISFACTION.



Bird's Eye View of Offices and Packing Sheds of the Springhill Nursery, Tipp City, Ohio

INDEX

INDEX

INDEX

INDEX

INDEX

-A-

Abella ----- 32-41
 Almond, pink ----- 32
 Althae (Rose of Sharon) ----- 32-36
 Amaryllis ----- 23
 American Holly ----- 41
 Apple ----- 4-5
 Apricot ----- 7
 Arbor Vitae ----- 37-38-39-40
 Artemisia ----- 20
 Asparagus ----- 17

-B-

Baby's Breath ----- 47
 Barberry ----- 20-32-36
 Beauty Bush ----- 32
 Begonias, Winter Hardy ----- 47
 Biota ----- 37-38-39-40
 Bittersweet ----- 21-49
 Blackberries ----- 19
 Blackberry Lily ----- 21
 Bleeding Heart ----- 44
 Blueberries ----- 18
 Blue Fr. Daisy ----- 47
 Blue Spirea ----- 33
 Blue Spruce ----- 20
 Boston Ivy ----- 39
 Boysenberry ----- 14
 Bridal Wreath ----- 21-31
 Broad-leaf Evergreens ----- 41
 Buddleia ----- 29-30

Bulbs
 Canna ----- 24
 Dahlia ----- 22-29
 Gladiolus ----- 25-26-27
 Lily ----- 23-46
 Bush Cherry (Hansen's) ----- 8-13
 Butterfly Bush ----- 29-36
 Button Mums ----- 1

-C-

Calycanthus ----- 35
 Cannas ----- 24
 Canterbury Bells ----- 46
 Carnations ----- 46-48
 Cherry ----- 8
 Chinese Balloon Flower ----- 47
 Chinese Elm ----- 20-36
 Chinese Snowball ----- 34
 Chives ----- 19-20
 Chrysanthemums ----- 4-2
 Clematis ----- 49
 Columbine ----- 45-48
 Cone Flower ----- 45

Coral Bells ----- 47
 Coralberry ----- 33
 Coreopsis ----- 48
 Cornus (Dogwood) ----- 51
 Crab (Flowering) ----- 9-51
 Cranberry ----- 9-19-28
 Crepe Myrtle ----- 32
 Crimson Fl. Crab ----- 51
 Crimson Spirea ----- 32
 Currants ----- 18
 Cydonia ----- 32

-D-

Dahlias ----- 22-29
 Daisy, Blue Fringed ----- 47
 Painted ----- 48
 Shasta Alaska ----- 46
 White Swan ----- 47
 Delphiniums ----- 45-48
 Dewberries ----- 19
 Dogwood ----- 51
 Dolga Crab ----- 4

-E-

Elm ----- 20-50
 Evergreens ----- 37-38-39-40-41
 Evergreen Bittersweet ----- 41
 Evergreen Shrubs ----- 32-35-41
 Euonymus ----- 41

-F-

Ferns, hardy ----- 46
 Figs ----- 10
 Firebush ----- 32
 Firethorn ----- 35-41
 Fl. Cherry ----- 51
 Fl. Crab ----- 51
 Forget-me-nots ----- 48
 Forsythia ----- 31
 Foxglove ----- 46
 French Lilacs ----- 34
 Fruits ----- 4 to 16

-G-

Gaillardia the dazzler ----- 48
 Gardenia ----- 33
 Ghost Plant ----- 20
 Gladiolus ----- 25-26-27
 Gold Flower ----- 33
 Golden Bell ----- 31
 Golden Globe ----- 32

Gooseberries ----- 18
 Grapes ----- 12
 Grass Seed ----- 25

-H-

Hardy Orchids ----- 46
 Hawthorn ----- 35-51
 Hedge Plants ----- 36
 Hibiscus ----- 48
 Holly ----- 41
 Hollyhocks ----- 21-48
 Honeylocust ----- 50
 Honeysuckle ----- 33-35-49
 Horseradish ----- 17-18
 Hydrangea ----- 31

-I-

Iris
 New Kaempferi ----- 47
 Fall Blooming ----- 20
 Shilka ----- 46
 Tom Thumb ----- 20
 Ivy
 Boston ----- 49
 English ----- 49
 Porcelain ----- 49

-J-

Juniper ----- 20-37-38-39-40

-K-

Kolkwitzia (Beauty Bush) ----- 32

-L-

Lemon ----- 10
 Lilacs ----- 34-35
 Lilies ----- 23-46
 Lombardy Poplars ----- 50
 Loncera ----- 33-35-49
 Loosestrife ----- 46

-M-

Magnolia ----- 51
 Mahonia ----- 41
 Maple ----- 21-50-51
 Mock Orange ----- 33
 Mt. Ash ----- 50
 Mulberry
 American ----- 10
 Hedging ----- 36
 Russian ----- 10
 Mums ----- 1-42
 Myrtle ----- 32

-N-

Nut Trees ----- 11

-O-

Oak Leaf Hydrangea ----- 31
 Old Fashion Lilacs ----- 34
 Orange ----- 10

-P-

Paw Paw ----- 10
 Peach ----- 6-7-20
 Pear ----- 9
 Peanuts ----- 19
 Peonies ----- 24
 Perennials ----- 40
 Persian Lilac ----- 34
 Persimmon ----- 10-19
 Phlox ----- 28
 Physostegia ----- 45
 Pine 36-37538-39-40
 Pink Veronica ----- 46
 Plum ----- 9
 Plumbago ----- 47
 Privet ----- 36
 Prune ----- 9
 Purple Cone Flower ----- 45
 Purple Wistaria ----- 21-49
 Pussy Willow ----- 34

-Q-

Quince ----- 7

-R-

Ranunculus ----- 28
 Raspberries ----- 16
 Red Bud ----- 21
 Red Hot Poker ----- 47
 Red Leaf Barbary ----- 20-32-36
 Red Leaf Maple ----- 51
 Red Fl. Dogwood ----- 51
 Rhubarb ----- 47
 Rocky Mt. Cherry ----- 10
 Roses ----- 54-55-56-57
 Rose of Sharon (Althae) ----- 32-36
 Rosy Loosestrife ----- 46

-S-

Sacred Tiger Flower ----- 23
 Sage ----- 17-19

Scarlet Fruited Firethorn ----- 35
 Scarlet Flower Hawthorn ----- 35
 Scarlet Fruited Holly ----- 41

Seed
 Grass ----- 25
 Vegetable ----- 52-53
 Shade Trees ----- 50-51
 Shasta Daisy, Alaska ----- 46
 Shrubs ----- 35
 Silver Lace Vine ----- 49
 Silver Maple ----- 40
 Smoke Trees ----- 31
 Snowball ----- 34
 Spirea ----- 21-31
 Spruce ----- 20-37-38-39-40

Strawberries ----- 15
 Strawberry Guava ----- 10
 Sugar Maple ----- 50
 Sweet Shrub ----- 35
 Sweet Williams ----- 48

-T-

Tamarix ----- 34
 Taxus ----- 37-38-39-40
 Trees ----- 50-51
 Tritoma ----- 47
 Tuberoses ----- 20
 Tulip Tree ----- 50

-V-W-Y-

Vegetable Seed ----- 52
 Verbena ----- 35
 Veronica ----- 47
 Viburnum ----- 34
 Vines ----- 49
 Violet ----- 21
 Walnuts ----- 11
 Weeping Willow ----- 50
 Weigela ----- 35
 White Birch ----- 50
 White Snowberry ----- 47
 White Swan Daisy ----- 47
 Wistaria ----- 21-49
 Witch Hazel ----- 33
 Yew ----- 37-38-39-40
 Yoshino Cherry ----- 51
 Youngberry ----- 19

NOTICE: See Special Farm Journal, Pathfinder and Poultry Journal subscription offers enclosed.



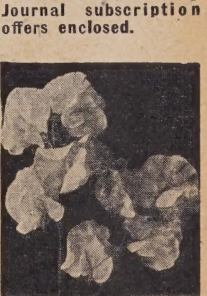
Yellow Day Lily



Golden Peacock Shrub



Sedum



Sweet Peas



Shamrocks

EVERBLOOMING SHAMROCKS—(Oxalis)—Continuous flowering. Lovely dainty pink flowers in clusters, attractive four-leaf clover like foliage. Bulbs not winter hardy, care for same as gladiolus. No. 1 blooming size bulbs, catalog number 324A-472, 10 for 65¢; 25 for \$1.25; 100 for \$4.50; 3 for 25¢.

YELLOW DAY LILY (Hemerocallis)—Favorite perennial dwarf lily. Beautiful pure lemon colored lilies in clusters. One of the hardest and easiest plants to grow. Thrives in sun or shade. 2 yr. blooming size, catalog number 3S4A468, 3 for 50¢; 6 for 90¢; 12 for \$1.60.

GOLDEN PEACOCK SHRUB—(Cytisus)—Attractive and graceful bright green branches and highly ornamental foliage all year on compact dwarf plants. Lovely golden sweet pea-like blooms with crimson wings. 2 yr., 1 to 1½ ft. size, catalog number 3S4B-264, 40¢ each; 2 for 75¢.

Sedum Brilliantissima NEW SEDUM BRILLIANTISSIMA—The most colorful, tall growing cut flower variety. Large, rosy-red flowers for weeks. Hardy, grows in poor soil, withstands dry weather. Excellent for cutting and garden borders. Special, 2 yr. blooming size, catalog number 3S4A441, 3 for 39¢; 10 for \$1.25.

HARDY SWEET PEA (Lathyrus)—Grows each year without replanting and blooms throughout the summer. Fast growing hardy vine with red, pink, and white flowers. A favorite hardy fast growing vine. 2 yr. blooming size, catalog number 3S4A472, 3 for 30¢; 10 for 89¢.

GROW · SAVE · BEAUTIFY ·

with SPRING HILL'S *GUARANTEED* TREES

RAMBO Well known favorite for good flavor. No other apple is prized so much for eating and desserts.

BALDWIN Old favorite with rich, juicy red apples that keep into the winter. Yields large crops.

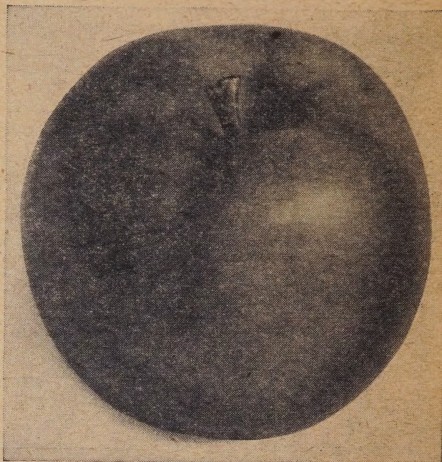
WEALTHY The leading summer variety. Heavy yielding, high quality, red striped, juicy and tart.

McINTOSH Follows Wealthy for season. A bright red tangy apple unsurpassed for eating and cooking.

JONATHAN High quality, crisp, bright red fruits. Quality and quantity unsurpassed for cooking and eating.

NEW LODI Extra early large golden apple, surpassing Yellow Transparent for cooking and eating. Ripens 2 weeks after Transparent.

GRIMES GOLDEN Our leading yellow apple. Dependable and tasty, favorite for cooking and eating.



McIntosh Apple

Famous Dolga Crab Apple for Jelly, Pickles, Beauty and Pollination

NEW DOLGA The best of all. Bearing 2nd year. Unusually beautiful fiery red fruit. Makes superb jelly and sells on sight. Semi-dwarf, makes excellent ornamental tree.



ECONOMIZE
Grow Your Own Fruit For Health, Beauty



Jonathan Apple

RED ROME BEAUTY Late keeping, cooking apple. Unsurpassed for yield. Commands high prices.

STAYMAN WINESAP A champion for size, quantity and productiveness. Leading cooking and eating apple.

YELLOW DELICIOUS Same shape, size and quality of regular Delicious, excels in quality and yields.

YELLOW TRANSPARENT First to ripen. Dependable, high yielding early variety. Large golden.

DOUBLE RED DELICIOUS Famous for color, mellowness, flavor, cooking, and yields.

NEW GIANT RED WINESAP (Turley)—Highly recommended for size, color, yields and quality. New colorful high quality variety highly recommended for middle west.

APPLE TREE PRICES—All varieties of Apple Trees alike or assorted

Size	Catalog No.	Price Each	Price for 3	Price for 10	Price for 25
Good, 3-4 ft. tall.....	4S4C300	\$.65	\$1.85	\$ 5.65	\$12.95
Better, 4-6 ft. tall.....	4S4B300	.90	2.60	8.25	19.25
Best, 6-7 ft. tall, super size....	4S4A300	1.25	3.65	11.75	27.95

SPRING HILL NURSERIES... Horticulture Specialists & Consultants... Tipp City, O.

5 KINDS OF APPLES ON ONE TREE

Five different varieties grafted on one tree. A tree you'll be proud to display and enjoy. Think of having red, golden, striped and green apples on the same tree at the same time. Five leading varieties, all excellent for cooking and eating. Apples from early summer until late fall on one tree. Catalog number 5S4A309, 3 yr., 6-7 ft., super size, bearing age, \$3.45 each. (Supply limited) 2 yr., 4-5 ft. size, \$2.85 each.

DEAR FRIENDS AND FELLOW GARDENERS

Spring Hill's fruit trees, small fruits, vegetable seed, nut trees, etc., will provide more healthful and cheaper food for canning and eating. Our roses, shrubs, flowers, flowering trees, ornamental evergreens, etc., build morale that brings relief to strained nerves and solace for the sad heart.

THERE IS A SERIOUS SHORTAGE OF FRUIT TREES AND SMALL FRUITS due to a tremendous increased demand for fruit trees and small fruits for Victory Gardens, and labor shortages, plus unfavorable planting weather this past Spring.

This reliable 95 year old garden service organization GUARANTEES high quality at moderate prices. Spring Hill is fortunate in having the most reliable and dependable varieties in Standard A. A. N. grades. With limited supplies in many sizes and varieties we urge you to place your order early. When present supplies are sold we will have to refund because there are no additional trees available. We have not sacrificed quality and only increased prices to cover increased expense.

Nursery stock is alive and perishable, therefore requires expert care. SPRING HILL has the buildings, equipment, experienced organization, etc., to guarantee and properly handle your order. Why take chances? Order from Spring Hill, a reliable family enterprise backed by 3 generations; 95 years experience. Operated in the interest and for the welfare of our customers. SATISFACTION GUARANTEED.

THOMAS B. KYLE
President



Anoka

ANOKA—A NOTEWORTHY APPLE

This noteworthy apple, created by one of America's master plantsmen, often bears fruit the first year. No waiting for those wanting fruit immediately. Hardy in all climates, this great apple has proved to be one of the very best summer apples, with large, well-formed, red, striped fruits excellent for eating and cooking. Remember—no waiting. Better order a tree now and have apples next summer. 3-4 ft. tall, catalog number 5S4C300, 75¢ each; 3 for \$2.15; 10 for \$6.85. 6-7 ft. tall, catalog number 5S4A300, bearing age, \$1.35 each; 3 for \$3.95; 10 for \$12.65.

DIRECTIONS FOR PLANTING FRUIT TREES

Trees should be planted immediately after arrival, if possible. After opening package, keep roots covered with damp cloth—never expose to sun and air.

1. Notice cut opposite.
2. Dig hole large enough so that roots will not be crowded. Make separate pile of fertile top soil—the first six or eight inches first removed from hole.
3. Tree must be planted two inches deeper than grown in nursery, or two inches deeper than old soil mark around tree.
4. Put fertile top soil around roots breaking up so that there are no air pockets. Fill hole about two-thirds full, pressing earth down firmly. Water well. Fill hole to top.

The first year a mulch of well-rotted manure should be used to hold moisture and build fertility. No other fertilizer should be used until the second year. Do not let fertilizer or manure come in contact with roots or body of tree.



GUARANTEED PLANTS Buy With Confidence

PEACHES



A basket of Springhill's Champion peach picked from our 3-4 ft. size tree the third summer after planting. Write for special quantity prices.

ELBERTA The old reliable; most planted and big money maker. Fine juicy, golden yellow freestone. Unsurpassed and most dependable variety.

CHAMPION The finest flavored peach. Beautiful large red blushed peaches of highest quality. Creamy white flesh; mid-season; freestone; high yielding.

J. H. HALE Earlier than Elberta, also superior in color, size and flavor. Extra large and colorful, commanding highest prices.



Elberta

EARLY ELBERTA Like the famous Elberta except about 2 weeks earlier. A sure money maker. Large, yellow freestone with red blush.

NEW HALEHAVEN Extra hardy. A cross of J. H. Hale and South Haven with the best characteristics of each.

LATE ELBERTA The leading late peach. Elberta type large yellow freestone 2 to 3 weeks later. Extend peach season.

GOLDEN JUBILEE Early yellow freestone. High quality, excellent color and flavor. A vigorous grower and hardy highyielding variety.

SOUTH HAVEN Extremely prolific bearer of large golden yellow freestone peaches. Early ripening; colorful fruit; superb size; hardness and heavy yields.

PEACH TREE PRICES—All varieties of Peach Trees listed alike or assorted

Size	Catalog No.	Price Each	Price for 3	Price for 10	Price for 25
Grower, 2-3 ft. tall.....	6F4D303		\$.95	\$ 2.85	\$ 5.85
Good, 3-4 ft. tall.....	6F4C303	\$.60	1.70	5.25	11.75
Better, 3-4 ft. tall.....	6F4B303	1.00	2.90	9.25	21.85
Best (Super Size), 6-7 ft. tall.....	6F4A303	1.25	3.65	11.75	27.95

GIANT RED McDONALD RHUBARB

The finest and highest yielding rhubarb grown. Giant red, tender stalks two or three times larger than common rhubarb. McDonald never seeds and while it is Spring's earliest vegetable the stalks stay tender and juicy for months. As fast as you remove the stalks others take their place; a tremendous yield, unsurpassed for canning and cooking. Once planted it produces a life time. Spring Hill guarantees true imported strain grown from hand cut division of crown plants. Very scarce, supply limited. Catalog number 6S4A12, 75¢ each; 3 for \$2.15.

SPRING HILL NURSERIES... Horticulture Specialists & Consultants... Tipp City, O.

PLANT SPRING HILL'S SUPERIOR PEACHES FOR *Profit* HOME GROWN TASTE BETTER, COST LESS!

FAMOUS ORANGE QUINCE

GIANT ORANGE QUINCE—Most popular large quince. Famous for its size, rich golden-orange colors, productiveness, aroma and most excellent quality. The best variety for cooking because it gets tender and has an excellent flavor. Bears 3rd year. 3-4 ft. tall, catalog number 7S4C309, 98¢ each; 3 for \$2.85. 6-7 ft. tall, super size bearing age, catalog number 7S4A-309, \$1.95 each; 3 for \$5.75; 10 for \$18.65.



High Yielding APRICOTS

MOORPARK Extra large, hardy and one of the finest apricots. Rich, juicy and sweet yellow freestone variety famous for high yields.

SUPERB Extra hardy apricot, originated in Kansas. Medium large fruit, firm and highly colored. Superb for canning, eating and drying. One of the best.

Your choice of above varieties, 2 yr., 3 to 4 ft. size, catalog number 7S4B310, \$1.55 each; 2 for \$2.95. 5 to 7 ft. size, catalog number 7S4A310, \$1.95 each; 2 for \$3.75; 6 for \$10.60.

We suggest you plant one each of above varieties for cross-pollination.

Superb
Apricot

WAR STAMPS ACCEPTED MAIL WAR STAMPS in payment for your plant order from Spring Hill. Many feel the importance of necessity in purchasing war stamps. Spring Hill will accept War Stamps for payment of your order, in that way Uncle Sam will have the money; YOU HAVE the plants; we have the stamps which will be turned into War Bonds. Spend your money where it will do the most good.

HISTORY OF OUR BUSINESS

Peter Bohlender Stayed At Home While Gold Miners Rushed West To California.

In 1849, the same year in which gold was discovered in California, Peter Bohlender started working in a nursery near Dayton, Ohio. His natural love of trees and plants, his intimate knowledge of their proper planting and care, led him to the nursery business. So with the smallest of shoestring beginnings he launched his career as a nurseryman.

The buildings were small and the market was restricted to fruit trees and a few ornamental shrubs. Slowly, but surely, business improved and the nursery expanded. People around the locality of the nursery found that they could depend on Peter Bohlender's selection of plants. These people told their friends and the fame of the little nursery spread.

Perhaps Peter Bohlender never realized it, but one of the main factors in his success is that he was never an "office nurseryman" . . . he worked side by side with his men, cultivating the soil, planting and transplanting. Literally and actually he knew the business from the ground up. Even today, his grandson-successors are to be seen working in the fields. Like Peter Bohlender, they know the conditions of the soil from Practical Experience. . . . and will tell you just how to go about improving your home both from the standpoint of improvement and investment.

For 95 years the Spring Hill Nurseries has been operated by the same family . . . from Peter Bohlender to son to grandsons. Under each generation the management has been of the productive rather than the executive type.

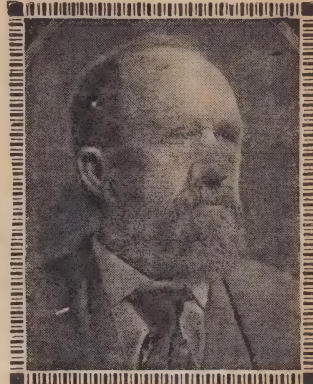
With the members of the family are a number of staunch and loyal

workers who have served from a quarter to almost half a century, each one generously giving valuable experience and advice.

Today, in 1944, the unbelievably small nursery has grown to gigantic proportions. . . the packing sheds alone now contain approximately 75,000 square feet, nearly 2 acres of floor space! It's the largest of its kind in the country! From these packing sheds each year go millions of plants and trees to every state in the Union!

We attribute our success and growth to our location in the heart of the fertile Miami River Valley of Central Ohio, where we have superlative conditions for the production of the finest plants. Because of our buildings and modern methods of operations Spring Hill is TODAY able to offer better plants, better service and better values for your money.

SATISFACTION GUARANTEED



PETER BOHLENDER, Founder
Est. 1849

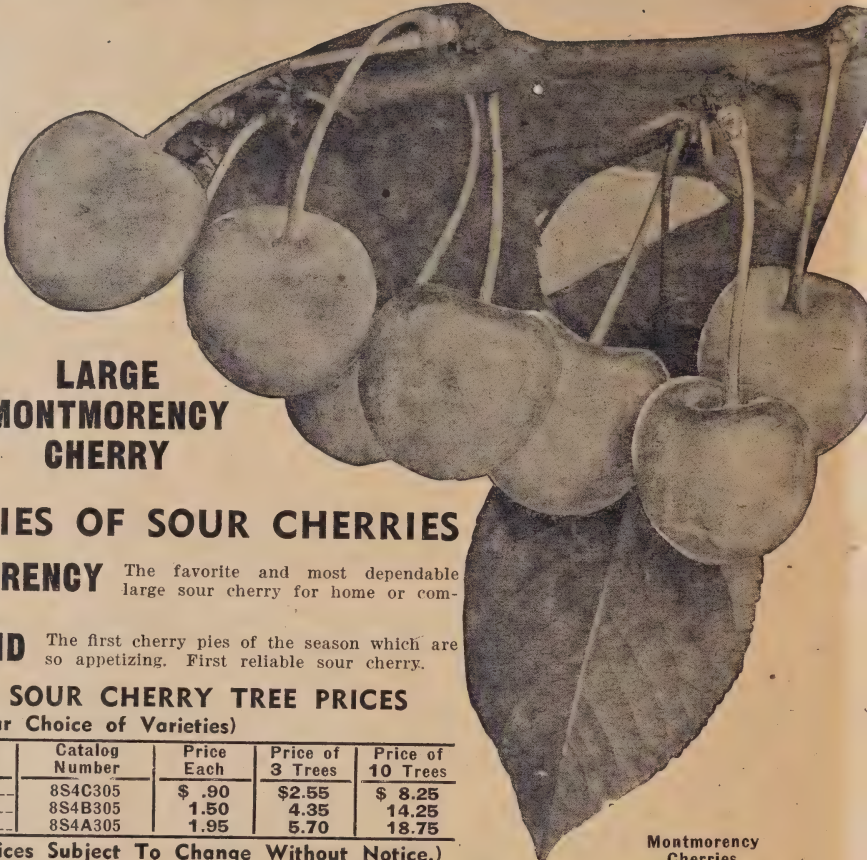


SPRING HILL NURSERIES... Horticulture Specialists & Consultants... Tipp City, O.

Springhills LUSH CHERRIES



LARGE MONTMORENCY CHERRY



Montmorency Cherries

BEST VARIETIES OF SOUR CHERRIES

LARGE MONTMORENCY The favorite and most dependable large sour cherry for home or commercial use.

EARLY RICHMOND The first cherry pies of the season which are so appetizing. First reliable sour cherry.

SPRING HILL'S SOUR CHERRY TREE PRICES (Your Choice of Varieties)

Grade and Height	Catalog Number	Price Each	Price of 3 Trees	Price of 10 Trees
Good, 3-4 ft. tall, 2 yr.-----	8S4C305	\$.90	\$2.55	\$ 8.25
Better, 4-6 ft. tall, 2 yr.-----	8S4B305	1.50	4.35	14.25
Best, 5-7 ft. tall, 3 yr.-----	8S4A305	1.95	5.70	18.75

SUPPLY LIMITED. (Prices Subject To Change Without Notice.)

DWARF QUICK BEARING BUSH CHERRIES

Two decades of plant breeding and hybridizing by Prof. N. E. Hansen of South Dakota State College have resulted into new improved hardy Bush Cherries. The productive small shrub-like plants are beautiful and useful. Bear abundantly 1st or 2nd year, high quality plum-like cherries, delicious to eat and fine to cook in sauces, jams or jellies. Lovely snow-white flowers fill the plants each Spring. Grows 4 ft. tall, handsome silvery foliage. Excellent planted in groups, as a hedge or mixed shrub border. Plant 4 to 6 ft. apart. Large bearing age, 4 yr., 3 ft. tall, catalog number 8S4A335, \$1.00 each; 3 for \$2.85; 10 for \$8.95. 2 yr., 2 ft. tall, catalog number 8S4C335, 55¢ each; 3 for \$1.45; 10 for \$3.95.

BEST VARIETIES OF SWEET CHERRIES

THE FAMOUS BLACK TARTARIAN You pay premium prices at fruit stands. My, but they are delicious! Large, almost black sweet fruits.

ROYAL ANN The golden sweet cherry we know so well with a blushed cheek. Without question the leading and best yellow cherry. Sold out of 5-7 ft. size, order smaller sizes.

SPRING HILL'S LUSH CHERRY TREE PRICES

Grade and Height	Catalog Number	Price Each	Price of 3 Trees	Price of 10 Trees
Good, 3-4 ft. tall, 2 yr.-----	8S4C306	\$1.35	\$3.95	\$12.75
Better, 4-6 ft. tall, 2 yr.-----	8S4B306	2.00	5.85	19.25
Best, 5-7 ft. tall, 3 yr.-----	8S4A306	2.25	6.60	21.75

NANKING CHERRY A delicious fruit; a beautiful ornamental tree. (Prunus Tomentosum.) Prized for its oriental beauty of foliage and bloom, plus loads of delicious cherries. Lovely pink flower buds fill the plants each Spring and change to white as the foliage appears. Strong branched plants 2 ft. tall, bears 2nd year, catalog number 8S4C334, 45¢ each; 3 for \$1.15. 3 yr. bearing age, 2 1/2 to 3 ft. tall, catalog number 8S4334, 89¢ each; 3 for \$2.55. Bearing age, 4 yr., 4 to 5 ft. tall, catalog number 8S4A334, \$1.70 each; 3 for \$4.75.



Nanking Cherry

GET

THIS BIG LIVE MAGAZINE

NOW!

60 MONTHS \$1.00 or 12 MONTHS 25¢

YOU will be delighted and wonder how these two great up-to-the-minute illustrated magazines, now printed together, can cost so little. It's for all — men, women, boys and girls, — clean and wholesome, no liquor advertisements.

Farm Journal and Farmer's Wife, Dept. C, Phila., Pa.

I'm enclosing \$1.00 for 60 months subscription **OR** I'm enclosing 25c for 12 months subscription

Mark the Offer You Want. Send Money Our Risk.

Name

R.F.D. .. Box .. or Street ..

If you live on a R. F. D. put route number above for prompt service.

P. O. State

IMPORTANT: Send coupon direct to Farm Journal and Farmer's Wife, Dept. C, Philadelphia 5, Pa., with remittance (at our risk). Offer good only in U. S.



SEE
OTHER
SIDE

TAKE YOUR CHOICE

60

MONTHS

\$1

More For Your Money

—Send \$1.00 for 60 months and protect against price increase and additional paper rationing. Or 25¢ gives you 12 big issues, biggest value ever for a Quarter.

12

MONTHS

25¢

Something for the Whole Family

Farm Journal and Farmer's Wife is published monthly; big issues; new timely features; fine pictures; beautiful colored covers. Brief, easy to read; 67 years old. Largest subscription list in the world,—over 2,700,000 from Maine to California; Money back if not satisfied.

UNLIKE ANY OTHER MAGAZINE

For folks who live in the Country and love the Country. Printed on fast-running presses, this Month Ahead-Magazine gets the important news to you first when it is valuable and useful.

Farm Journal section: Latest ideas in farm practice, equipment and machinery repairs, livestock, dairying, poultry, crops, orchard, garden, and everything about the farm. Latest Washington news important to farmers.

Farmer's Wife section carries new practical ideas on home decorations, fashions, fancywork, health and beauty. Canning, foods recipes tested in our own Farm Kitchen. Features on country life. Farm Women's letters, etc. Fiction by nationally known authors.

Youth section: Latest 4-H Club and FFA news, answers to youths' problems, grooming, etiquette, parties, games, movies, sports, aviation, hobbies, success stories, money-making ideas, jokes, cartoons, etc.

WILL HELP YOU GROW A BETTER GARDEN

Mail this Coupon today with remittance (at our risk), direct to Farm Journal and Farmer's Wife, Dept. C., Philadelphia 5, Pa.

Recommended by

SPRING HILL NURSERY

If you are now a Subscriber, you may mail or give this Valuable Coupon to a friend who is not

Finest HARDY PLUMS



Yellow Egg

BUSH CHERRIES or DWARF PLUMS
See Page 13

BURBANK Large, bright cherry red. A success in all sections. Prolific bearer of tender, juicy fruits.

GIANT PRUNE Most popular bright blue freestone plum. Firm, golden flesh. Extra large, high yielding variety of great merit.

YELLOW EGG Favorite for canning and eating. Heavy yielder of extra large, golden freestone fruits. Supply limited. We urge you to give us alternate variety to ship.

NEW STANLEY PRUNE Most outstanding large blue plum. Surpasses in quality, hardness; ripens two weeks earlier than other large prune plums. Highly recommended by commercial growers and experiment stations.

PLUM TREE PRICES

Your choice of all varieties of plum trees listed

Grade and Height	Catalog Number	Price Each	3 Trees	10 Trees	25 Trees
Good, 3-4 ft., 2 yr.-----	9S4C302	.95	2.70	8.50	20.00
Best, 5-7 ft., super size---	974A302	1.65	4.80	15.00	37.50

AMERICAN CRANBERRY BUSH (Viburnum Americana)

Spring Hill offers hybrids of large fruiting heavy yielding strain. Selected for fruiting 2 yr., 1/2 to 2 ft., catalog number 9S4A207, 30¢ each; 3 for 75¢; 12 for \$2.70; 25 for \$4.95. Bearing age, 4 yr., 3 ft., catalog number 9S4B207, 60¢ each; 3 for \$1.65; 12 for \$6.30; 25 for \$12.50.

BEST PEARS *Delicious and Healthful* *HIGH YIELDS... EASY TO GROW*

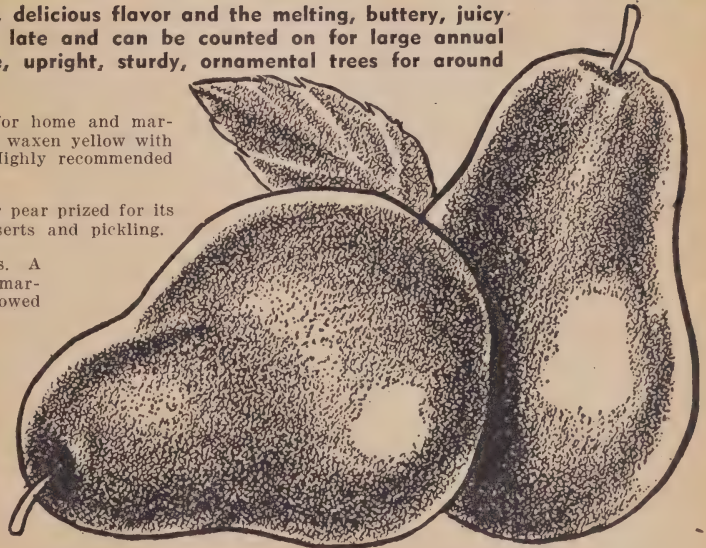
Noted for their delicate, mild, sweet, delicious flavor and the melting, buttery, juicy texture of their flesh. Pears bloom late and can be counted on for large annual crops. They are easily grown. Fine, upright, sturdy, ornamental trees for around your home.

BARTLETT Universal popularity for home and market. Large, handsome, waxy yellow with red blushed cheeks, ripening in August. Highly recommended for eating and canning.

SECKEL The well known small sugar pear prized for its rich flavor for eating, desserts and pickling.

KIEFFER Excellent keeping qualities. A favorite for canning and marketing. The large fruits when properly mellowed in storage are extra good.

DUCHESS The largest of the really good pears. A vigorous growing, reliable bearing variety well flavored with unsurpassed sweet and mellow white flesh. Ripens in October.



ORANGES and LEMONS see Novelty Fruit Page 10

INDEX PAGE 3

PEAR TREE PRICES

Your choice of all varieties of pear listed above. (Supply limited)

Size	Catalog Number	Price Each	3 Trees	10 Trees	25 Trees	100 Trees
Good, 3-4 ft., 2 yr.-----	9S4C304	.95	2.70	8.50	20.00	79.00
Best, 5-7 ft., super size---	9S4A304	1.65	4.80	15.00	37.50	149.00

SPRING HILL NURSERIES... Horticulture Specialists & Consultants... Tipp City, O.

NOVELTY FRUITS *New! Different!*

ENJOY DELICIOUS FRESH FRUIT FROM DECORATIVE PLANTS • UTILITY • BEAUTY

FIGS IN THE NORTH THIS SUMMER

Grow Figs at home in the north. Adapted to a wide range of soils. Can be planted outside but are not hardy north of Washington, D. C., and should be potted and taken inside each fall. Very ornamental leaves and large brownish-purple fruit. Are wonderfully good, you will prefer the fresh fruit to that bought over the counter. Will bear an abundance of fruit for you this summer in your own yard. Plant in rich soil for rapid growth. Catalog number 10S4A391, 2 yr. plants, trimmed for planting, 80¢ each; 2 for \$1.40; 6 for \$3.90.

NEW GIANT AMERICAN MULBERRY

(**Everbearing**)—Beautiful large heavy foliage make New American a wonderful hardy ornamental tree that is filled with fruit from June until September. A heavy annual bearer; vigorous growing; long lived trees whose long large quality fruit makes excellent jam, jellies and pies. Also a wonderful tree for birds. Catalog number 10S4A387, 2 yr. grafted trees, 4 to 5 ft. tall, 80¢ each; 3 for \$2.25.



Giant New Am. Mulberry

PAW PAW OR CUSTARD APPLE

Handsome dwarf trees grown for their large, handsome foliage, attractive cinnamon flowers and large, greenish-golden edible banana-like fruits. Liked by many people. Grows well in dense shade and in full sunlight. New low price. Catalog number 10S4AB389, 2 to 3 ft., 75¢; 3 for \$1.95.

RUSSIAN MULBERRY

A fine hardy ornamental, fruit-bearing tree. Useful fruits for canning and culinary purposes. Also fine to attract birds. Commences to bear when 2 years old. Bearing age, 3 yr., 3 to 4 ft. tall, catalog number 10S4A386, 10 for \$2.15. SPECIAL SALE PRICE, 2 for



NEW EVERBEARING LEMON

(**Everbearing Giant Ponderosa Lemon**) Enjoy this interesting, beautiful and useful dwarf indoor plant. The plants are easy to grow, blooming and fruiting all year. The large fragrant, waxy white flowers are rich in romance and reminiscent of the gardenia. The large lemons often weigh 2 to 3 pounds and are used for their excellent juice. Large 3 yr. blooming size plants, 2 ft. tall, catalog number 10S4A385, \$2.50 each; 3 for \$6.95. 2 yr. plants, 1 ft. tall, catalog number 10S4B385, 85¢ each; 3 for \$2.25.



New Everbearing Lemon

DWARF FRUITING ORANGE

(**Otaheite Orange**)—Lovely foliage, fragrant flowers and delicious little oranges. Flowers throughout the season. The delightfully fragrant waxy white blooms are produced abundantly. The dwarf plants often have blossoms, green and ripe fruit on the tree at the same time. Otaheite is particularly adapted to pot culture. Easy to grow, often bears 1st year. 2 yr. blooming age, 10 to 15 inch tops, catalog number 10S4B390, 90¢ each; 3 for \$2.65.

STRAWBERRY GUAVA

This luscious tropical fruit is a useful and charming house plant of easy culture. Pure white fragrant flowers and large red fruits the size of a walnut. The dwarf plants are especially suitable to pot culture. The fruit is delicious and sweet with a spicy flavor. Prized for eating and wonderful for jams and jellies. 2 yr. pot plants, catalog number 10S4B392, 70¢ each; 3 for \$1.95.

AMERICAN PERSIMMON

A beautiful compact, symmetrical shaped dwarf tree with handsome rich green foliage. A rare tree filled each autumn with large meaty, healthful fruits. The spicy fruits highly prized for eating after frosts. Plant two or more trees for cross-pollination. Catalog number 10S4C388, 2 ft. tall, 2 for 60¢; 6 for \$1.50. 4 ft. size, catalog number 10S4A388, 2 for \$1.15; 6 for \$3.15; 70¢ each.

ROCKY MT. CHERRY

(**Prunus Besseyi**)—A beautiful productive landscape plant. A native dwarf shrubby tree with handsome silvery foliage. Exquisite white flowers in spring like cherries. Prized for cooking, preserves and pies, etc. Plant two or more trees for cross-pollination. Catalog number 10S4C386, 2 yr. 2 ft. blooming size, 2 for 65¢; 6 for \$1.65; 12 for \$2.95.



Rocky Mt. Cherry

SPRING HILL NURSERIES... Horticulture Specialists & Consultants... Tipp City, O.

Money Making NOVELTY NUT TREES

AMERICAN HAZEL NUT (*Corylus Americana*)—Easy to crack and shell. Excellent large sweet kernels are produced in abundance on low shrubby plants, never growing over 6 ft. tall. A fine ornamental shrub that yields when planted close in hedges, shrubs or borders, etc. Extra hardy, attractive and easy to grow. ONE plant often yields a peck of nuts. 2 yr., 1 to 1½ ft. size, catalog number 11S4B728, 35¢ each; 3 for 90¢; 12 for \$2.95. 4 yr., 3 ft. tall bearing age, catalog number 11S4A728, \$1.25 each; 3 for \$3.60.

LARGE FRUITING BLACK WALNUT Spring Hill's large fruiting black walnuts are a select strain from Walnut Grove in Central Ohio. They are excellent lumber trees and yield an abundance of large meaty nuts. 2 yr., 2 ft. size, catalog number 11S4C730, 3 for 40¢; 10 for \$1.00; 100 for \$7.50. 3 yr., 3 to 4 ft. size, catalog number 11S4B730, 3 for 60¢; 10 for \$1.65; 100 for \$14.00. 6 yr. bearing age, 5 to 6 ft., catalog number 11S4A730, \$2.00 each.

ENGLISH WALNUTS (*Juglans Regia Sinensis*)—Spring Hill imported seed direct from Manchuria to raise this sturdy and hardy strain of English Walnuts. Fast growing with large mealy kernels with its shell easy to crack and remove the meats. Hardy wherever sweet cherry trees will grow, an excellent self-pollinating tree. 3 yr., 2 to 3 ft. size, catalog number 11S4B732, \$1.75 each; 3 for \$4.50. 4 yr., 4 ft. size, catalog number 11S4A732, \$2.85 each; 3 for \$8.25.

HEART NUT (*Juglans Cordiformis*)—Fascinating ornamental trees that bear in 3 years, heart shaped nuts in large grape-like clusters. Spring Hill recommends for those interested in the new and better trees. Heart Nut is noted for its superb flavored white meats that crack out in halves. The broad, tropical appearing trees are extremely hardy, fast growing and high yielding. A different and valuable tree. 2 yr., 2 ft. tall, catalog number 11S4C727, 65¢ each; 3 for \$1.80. 4 yr., 4 ft. tall, catalog number 11S4A727, \$2.00 each; 3 for \$5.70.

GRAFTED BLACK WALNUTS THOMAS—Easy to crack and remove meats. New extra large grafted thin shelled, excellent cracking black walnut. We believe Thomas is the best of the grafted black walnuts for large, light colored, tasty meats. A fast growing tree that bears early and is valuable for lumber and nuts. We recommend grafted Thomas walnut as a most practical and beautiful shade tree that will reward you with an abundance of thin shell tasty walnuts. Bearing age, 5 to 7 ft., catalog number 11S4A734, \$3.50 each; 3 for \$9.75.

NEW MANCHURIAN CHESTNUT (Blight Proof)—Enjoy finest chestnuts where Native American Chestnuts have blighted and died. Will bear second or third year after planting when 5 or 6 feet tall. We imported these hardy Manchurian Chestnuts (*Castanea Mollissima*) direct from Manchuria. Spring Hill guarantees the trees a blight resistant strain. The nuts are 1 to 1½ inches across, comparing in size, quality and sweetness to the best native chestnuts. Only a few hundred plants available. Transplants, 1 to 1½ ft. tall, catalog number 11S4B729, 70¢ each; 3 for \$1.95; 10 for \$5.95. 4 yr., 4 ft. tall, bearing age, catalog number 11S4A729, \$2.95 each. (Supply limited.)

MAMMOTH FRUITED HICKORY Six years ago our men found an especially large rather thin shelled hickory, which we believe to be the finest value hickory we have ever seen. The 3 yr. seedlings Spring Hill offers are grown from this large variety; however, we cannot guarantee the seedlings will reproduce true from seed. 4 yr., 2 ft. size, catalog number 11S4B731, 45¢ each; 2 for 80¢; 10 for \$3.45. 8 yr., 4 to 5 ft., catalog number 11S4A731, \$2.75 each.

CHINESE WALNUT Has withstood 20 degrees below zero without injury; begins to bear when three years old. The nuts are larger and are borne in clusters of 10 to 20. They resemble English Walnuts in size, shape, and flavor. 2 ft. size, catalog number 11S4C726, 75¢ each; 3 for \$2.15. 4 yr., 4 ft. size, catalog number 11S4B726, \$1.75 each; 3 for \$4.95.

AMERICAN BUTTERNUT (*Juglans Cinerea*)—Often called White Walnut; prized for eating and cooking because of its fine flavor. This beautiful fast growing hardy tree is valuable for timber and shade. The nuts are shaped like a pecan and do not have to be hulled for winter storing. An exceptional value. 2 ft. plants, catalog number 11S4B733, 35¢ each; 3 for 90¢; 10 for \$2.75. 3 ft. plants, catalog number 11S4A733, 60¢ each; 3 for \$1.50; 10 for \$4.75.

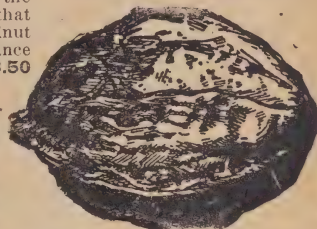
NEW HARDY PECAN Hardy and sturdy as an Oak. A splendid and beautiful rapid growing shade tree that will reward you with bushels of fine quality nuts 2 to 2½ inches long. The kernels are plump and of finest quality. Guaranteed a true hardy strain with large paper shell nuts easy to crack. 3 yr., 1½ to 2 ft. size, catalog number 11S4C725, SPECIAL SAVINGS, 60¢ each; 3 for \$1.65; 10 for \$4.95. 6 yr., 4 to 5 ft., catalog number 11S4A725, bearing age, \$2.50 each.



American Filbert



New Manchurian Chestnut



Hardy Chinese Walnut



Northern Hardy Pecan



A bushel of Thomas Walnuts

SPRING HILL NURSERIES... Horticulture Specialists & Consultants... Tipp City, O.

Wonderful New Hardy GRAPES

BEAR EVERY YEAR FOR A LIFETIME — — — HEALTHFUL AND ECONOMIC

Dependable and easy to grow. Springhill's Giant size 2 yr. vines will bear next year. Guaranteed finest hardy varieties in all America and highest quality plants. Your money refunded if not entirely satisfied.

NEW VAN BUREN Positively the best of all black grapes. Thoroughly tested by leading experiment stations and in commercial plantings. Superior in quality, vigor, size, color, and early ripening. For eating, jellies, road side sales, first and best early grapes. 2 yr., Catalog number 12S4A30, \$1.00 each; 3 for \$2.75.

NEW GOLDEN MUSCAT A New Hardy California Grape Government plant scientists have crossed the largest California grapes with our native varieties. Golden Muscat is the best of the new hybrids. This perfectly hardy variety has large bunches of delicious golden fruits which have only a few seeds. A new and different grape for the Middle West which we recommend highly. 2 yr., catalog number 12S4A39, \$1.15 each; 3 for \$3.25. Supply limited.

NEW SEEDLESS CONCORD GRAPE New York State Fruit Testing Association after years of hybridizing has succeeded in crossing the famous Concord grape and developing a new seedless race of grapes. Seedless Concord is Concord type. The bunches and berries are a little smaller but have the same fine flavor as regular Concord. 2 yr. select, catalog number 12S4A31, \$1.25 each; 3 for \$3.45.

NEW CAGO Early to bear; large compact bunches of delicious red grapes of the best quality. The highest honors were awarded this grape by the New York Horticulturists. 2 yr. No. 1, catalog number 12S4A33, 50¢ each; 3 for \$1.25; 10 for \$2.95. 2 yr., catalog number 12S4B33, 40¢ each; 3 for \$1.00; 10 for \$2.15.

CONCORD AMERICA'S FAVORITE *Specially* PRICED

Especially priced Concord—The most popular grape in the United States commercially and for home use. This dependable, heavy yielding variety has an abundance of large bunches of big, dark blue, sweet, juicy fruits. Special low prices. Bear second year.

Cat. No. 12S4A35. Giant Size 2 yr. XX, 30c each, 4 for \$1.00, 10 for \$1.95. Cat. No. 12S4B35, 2 yr., 3 for 60¢, 10 for \$1.65, 25 for \$3.25.



NEW PORTLAND Holds first place for all early white grapes. The bunches and berries are the largest of all the early white grapes. Highly recommended. 2 yr. No. 1, catalog number 12S4A32, 50¢ each; 3 for \$1.25; 10 for \$2.95. 2 yr., catalog number 12S4B32, 40¢ each; 3 for \$1.00; 10 for \$2.15.

AGAWAM Large compact bunches of beautiful red berries. Very productive and the best of its class. 2 yr., No. 1, catalog number 12S4A34, 45¢ each; 3 for \$1.15; 10 for \$2.75. 2 yr., catalog number 12S4B34, 35¢ each; 3 for 90¢; 10 for \$1.90.

DELAWARE Small compact red bunches of delicious berries. For desserts and eating. Extra sweet. 2 yr., No. 1, catalog number 12S4A36, 45¢ each; 3 for \$1.15; 10 for \$2.75. 2 yr., catalog number 12S4B36, 35¢ each; 3 for 90¢; 10 for \$1.90.

NIAGARA The most popular and best white grape of high quality with large bunches and big berries. 2 yr., No. 1, catalog number 12S4A37, 45¢ each; 3 for \$1.15; 10 for \$2.75. 2 yr., catalog number 12S4B37, 35¢ each; 3 for 90¢; 10 for \$1.90.

NEW FREDONIA Best of the new early grapes. Two weeks ahead of Concord. Fine clusters of extra large blue fruits that are plump and juicy. Recommended by experiment stations, eminent horticulturists and commercial growers. 2 yr., No. 1, catalog number 12S4A38, 45¢ each; 3 for \$1.15; 10 for \$2.75. 2 yr., catalog number 12S4B38, 35¢ each; 3 for 90¢; 10 for \$1.90.



Large BEARING AGE GRAPEVINES

Why wait? You can enjoy grapes from your own vines next fall. Plant now! The vines we will send you have already produced one crop of fruit. Concord only, trimmed for planting. Catalog number 12S4AA35, 90¢ each; 3 for \$2.35.

CONCORD GRAPE

13c ea. 2 yr. Size
In Lots of 25

See Description Page 12

90c ea.

3 for \$2.35

Catalogue No. 13S4AA35

New Seedless
Concord Grape
See Page 12

Dwarf Quick Bearing
CHERRIES

Amazing
Value!

Order
Early!



Dwarf Quick Bearing
BUSH CHERRIES

Two decades of plant breeding and hybridizing by Prof. N. E. Hansen of South Dakota State College have produced new improved hardy dwarf cherry. Plant Hansen's new quick bearing cherries. 1. Easy to grow, high yielding. 2. Sure to produce 1st or 2nd year. 3. Excellent to eat, cook or preserve. 4. Small shrub like plants for small area, beautiful ornamental plants. These wonderful plants have a two-fold purpose, being beautiful dwarf shrubs filled with useful wholesome fruit. Excellent planted in groups, as a hedge or screen and mixed in shrub border. The entire plant is filled with a mass of lovely snow-white flowers early each spring. The handsome foliage is silvery-green and turns to brightest red and gold in autumn. The fruit is larger than cherries but plumshaped. Delicious to eat from bush and fine in sauce, jams and jellies. Grows 4 to 5 ft. tall and 3 to 4 ft. broad, should be planted 4 to 6 feet apart.

Large bearing age, 4 yr. old, 3 ft. tall, catalog number 13S4A335, \$1.00 each; 3 for \$2.85; 10 for \$8.95. 3 yr., 2 ft. plants, catalog number 13S4B335, 55c each; 3 for \$1.45; 10 for \$3.95. 2 yr. 1 to 1 1/2 ft., catalog number 13S4C335, 3 for \$1.15; 10 for \$2.45.

America's Best
ECONOMY PRICES

STRAWBERRIES

GOV'T. INSPECTED
Guaranteed Quality



All Season Strawberry Family Patch

- 25 Premier -- .65
- 25 Ambrosia .75
- 25 Everbearing Gem 1.25
- 25 Everbearing Mastadon 1.40
- 100 1st Grade Plants
- REGULAR \$3.05 VALUE
- ALL FOR **\$2.65**
- SAVE 15%

New Everbearing Gemzata Strawberry



NEW GIANT

BOYSENBERRIES

The biggest berry ever developed! The fancy looking berries measure 1½ to 2 inches long and are beautiful purple color. The flavor is a combination of berries whose pleasing flavor either fresh, canned or in jams, jellies, pies, etc., is unsurpassed. Six plants will give the average family all the fruit they want for eating. Spring Hill's superior high yielding, hardy plants bear the next year after planting and fruit for 3 to 4 weeks. Highly recommended for home and commercial plantings. No. 1 plants, catalog number 14S4B335, 3 for 55¢; 6 for 90¢; 12 for \$1.50; 25 for \$2.95; 100 for \$9.65. 2 yr. bearing age, catalog number 14S4A335, 30¢ each; 3 for 75¢; 6 for \$1.40; 12 for \$2.50; 25 for \$4.95.



NEW GIANT THORNLESS BOYSENBERRY

A new hardy offspring of the regular boysenberry that retains all the superb flavor, size and high yielding qualities of its parent. Easier to pick, cultivate and work with in every way. Ripens 10 days earlier. (Supply limited.) 1 yr., No. 1, catalog number 14S4B336.

New Giant Thornless BOYSENBERRIES

3 for 95¢

6 for \$1.75; 12 for \$3.15

25 for \$5.85



Too Deep

Too Shallow

Too Cramped

Right Way

STRAWBERRY PLANTING

HAVE SOME STRAWBERRIES!

Pleasant Memories! Most of us recall the delightful hours spent in a strawberry patch. The strawberry is our most cosmopolitan fruit, adapting itself to practically all climates and soils. All of Springhill's strawberries are GUARANTEED fresh dug, true to name, superior yielding strains scientifically fed and grown on specially prepared soil to insure superiority in size, vigor and productiveness. All strawberries shipped direct from contract grower in Central Indiana.

EVERBEARING MASTADON

Extremely large, a leader in quality, size, dependability and yields for a decade. Best planted in hill culture 18 by 18 inches. Fruit 90 days after planting till freezing weather. Self-pollenizing.

EVERBEARING HONEY-SWEET

Wayzata Considered the perfect strawberry, plant in hill culture 18 by 18 inches as it grows in clumps making only a few runners. Famous for size, flavor, color and yields. Highly recommended. Self-pollenizing.

NEW EVERBEARING GEMZATA

A new cross of Gem and Wayzata. It has the good plant making qualities of Gem and the superb quality, size, color and flavor of Wayzata. Destined to be the greatest of all everbearing varieties. Only a few thousand plants available. Self-pollenizing.

EVERBEARING GIANT GEM

A leading variety. Outstanding for size, quality and beauty of its smooth bright red fruit. Bears 90 days after planting, enjoy strawberries this Fall, plant now. Good plant maker and self-pollenizing, can be planted alone. Prices below.

PREMIER

Dependable extra early, large, high quality, heavy yielding variety. A sure bearer therefore most planted of all strawberries. Self-pollenizing.

DORSETT

New, hybridized by U. S. Dept. of Agriculture. A Premier cross, larger in size, superior in color and quality.

FAIRFAX

Another Premier cross, introduced by U. S. D. A. similar to Dorsett in size and type but has darker firmer berries.

GATSKILL

The champion of its season. Considered the best most dependable, high yielding, colorful, high quality, mid-season variety.

AMBROSIA

Ripens a month later than Premier. Self-pollenizing, extremely hardy and tall, maturing its high quality fruits off the ground.

BLAKEMORE

Most planted berry in South. The most vigorous, easiest to grow and surest to yield. A colorful, firm high quality berry.

NEW MAJESTIC

According to our records and results Majestic is destined to be the leading variety. Plants larger than Premier, with better roots and more runners. Only Premier seedling surpassing it for commercial production. Topped Cincinnati market last 2 years. Self-pollenizing. (Supply limited.)

SENATOR DUNLAP

This grand old strain is probably the most popular variety in the Central states. Dependable, a sure bearer, tremendous yields of large high quality berries. A favorite for canning.

STATE CATALOG NUMBER, QUANTITY AND PRICE.
ORDER BLANKS PAGE 8 AND 48.

NEW STRAWBERRY PRICES

NAME	Catalog No	25	50	100	500
Dorsett	15S4A51	\$.70	\$1.25	\$1.95	\$6.25
Fairfax	15S4A52	.70	1.25	1.95	6.25
Premier	15S4A50	.65	1.15	1.90	5.95
Ambrosia	15S4A53	.75	1.35	2.55	7.95
Majestic	15S4A54	.85	1.55	2.85	9.00
Senator Dunlap	15S4A55	.55	.95	1.55	4.75
Blakemore	15S4A60	.55	.95	1.55	4.75
Evbr. Gem	15S4A56	1.25	2.15	3.45	12.00
Evbr. Gemzata	15S4A57	1.95	2.90	5.25	20.00
Evbr. Mastadon	15S4A58	1.40	2.25	3.95	14.00
Evbr. Wayzata	15S4A59	2.15	3.35	6.25	



EVERBEARING GEM PICKED FROM SPRINGHILL'S HIGH QUALITY NORTHERN GROWN PLANTS, OCTOBER 18

Enjoy HOME GROWN RASPBERRIES

GUARANTEED · TWICE GOVERNMENT INSPECTED

INSTRUCTIONS

PLANTING RASPBERRIES, BLACKBERRIES, DEWBERRIES, YOUNGBERRIES, BOYSENBERRIES

The above varieties resemble one another in general cultural needs.

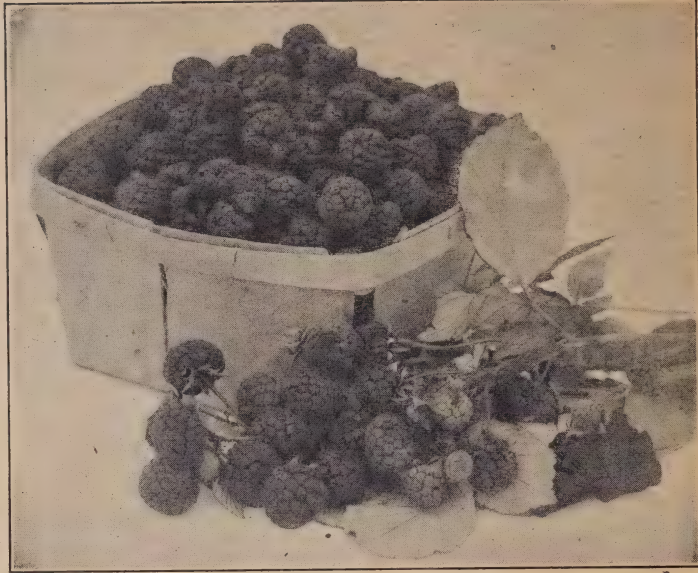
WHAT TO PLANT—Strong plants of any variety in this catalog are good.

WHERE—Plant in almost any soil. However, berries grow best in loamy, rich soil.

WHEN—Plant in early spring or fall.

HOW—Work ground evenly and thoroughly. Make hole large enough to accommodate roots without cramping. Cover crown of plant 1 to 2 inches, being sure the roots are not turned up or crowded. Firm dirt around roots but keep surface of ground loose. In mid-summer after canes have grown, pinch top about two feet above ground to make branch. The second year after harvesting the crop, cut out all old canes. Repeat year after year. Cultivation and fertility are essential for good, thrifty, disease-free plants.

PLANTING DISTANCE—Raspberries and Blackberries 3 ft. by 6 ft.; Youngberries, Boysenberries and Dewberries 6 ft. by 6 ft.



CHIEF New variety. Ripens earlier than Latham, greater hardiness, more disease-resistant, bears more abundantly. Beautiful bright red fruit. Prices see below.

GIANT LATHAM Latham is extra resistant to disease and insects. Vigorous grower that yields largest crops of mammoth sized berries. Famous for quality, bright red color and absence of seeds. Very hardy growing and producing in coldest parts of Northwest. The most popular and most planted of all Red Raspberries.

NEW RED GIANT EVERBEARING INDIAN SUMMER The best Everbearing Red Raspberry. Earliest to ripen; bears a full crop in June and an immense crop in the fall. A sensation because of its size, flavor, and unusual beauty. Wonderful keeping qualities. Berries are glossy red, conical in shape, and of extra large size. The greatest all-purpose Raspberry. The fall crops, when Raspberries are scarce and therefore highly prized, are heavier than the earlier ones. Prices see below.

BLACK BEAUTY An excellent new luscious variety. Succeeds extra well and very disease-resistant. Popular with commercial growers.

CUMBERLAND The largest of all black caps; firm and a good shipper. One of the most profitable as a market berry. Most vigorous, healthy and heaviest yielding dependable black raspberry. Berries are excellent for canning, preserving and the large sweet berries sell at highest market prices.

PRICES OF ALL RASPBERRIES LISTED ON THIS PAGE

Name	Catalog Number	Best Size #1 Grade				Catalog Number	Good Size #2 Grade			
		10	25	100	500		10	25	100	500
Chief	16S4A20	1.50	2.75	8.25	27.00	16S4B20	1.20	1.95	6.30	21.50
Latham	16S4A21	1.45	2.65	7.95	25.00	16S4B21	1.15	1.85	5.95	19.50
Black Beauty	16S4A22	1.55	2.90	8.65	29.00	16S4B22	1.25	2.15	6.65	23.00
Cumberland	16S4A23	1.50	2.75	8.25	27.00	16S4B23	1.20	1.95	6.30	21.50
Indian Summer	16S4A24	1.80	3.30	9.75	32.50	16S4B24	1.50	2.75	8.25	27.00

CULTURAL ADVICE FOR MOST SUCCESSFUL RASPBERRY GROWING

Plant dependable, high yielding and disease resistant varieties listed on this page. Any plants that show signs of disease should be removed and burned. Plant early as possible in the spring. In order to promote strong, stocky plants pinch tops of canes, when 18 inches tall, each summer, this makes more lateral branches resulting in heavier yields. Liberal quantities of manure and high nitrogen fertilizers are very beneficial. To maintain clean thrifty plants and control anthracnose use 1 lb. dry lime and sulphur to 5 gallons of water and spray in early spring before foliage starts. Also advisable to dust foliage throughout summer with sulphur. Cultivate regularly throughout the summer checking growth in late August because of danger from winter injury.

SPRING HILL NURSERIES... Horticulture Specialists & Consultants... Tipp City, O.

SPECIAL PRICED SMALL FRUIT

WASHINGTON ASPARAGUS New giant, rust-resistant strain ahead of others in size, tenderness, and long cutting period. A crop the first year after planting. Make money growing asparagus as it commands the highest prices. Mulch each fall with leaves or straw for best results.

Washington Asparagus Prices		10	25	100	250
Jumbo, 3 and 4 yr., No. 1	Catalog number, 17S4A10	1.25	2.25	5.45	9.95
2 yr., No. 1 grade	Catalog number, 17S4B10	1.00	1.60	3.75	6.95
1 yr., No. 1 grade	Catalog number, 17S4C10	.85	1.25	2.80	5.45

NEW PARADISE ASPARAGUS (1st time offered.) A grand new variety. Producing younger and heavier than any other asparagus. The stems are large, tender and green like Martha Washington with a milder flavor and with the same rust-resistant qualities of Martha Washington. Springhill strongly recommends Paradise as a new money maker and better variety that deserves all its acclaim and popularity. If only a limited space, plant Paradise, it yields so heavily.

New Paradise Asparagus Prices		10	25	100	250
Jumbo, 3 and 4 yr., No. 1	Catalog number, 17S4A11	1.60	2.90	6.95	12.35
2 yr., No. 1 grade	Catalog number, 17S4B11	1.25	2.25	5.45	9.95

SAGE Dried leaves prized for seasoning. Sage leaves are becoming very difficult to purchase. The attractive blue foliage makes sage a very ornamental as well as a useful plant for your garden. A permanent and valuable plant for your garden, easy to grow. 2 yr. field grown clumps, catalog number 17S4A394, 40¢ each; 3 for \$1.10; 6 for \$1.95. 1 yr., catalog number 17S4B394, 30¢ each; 3 for 75¢; 12 for \$2.65.

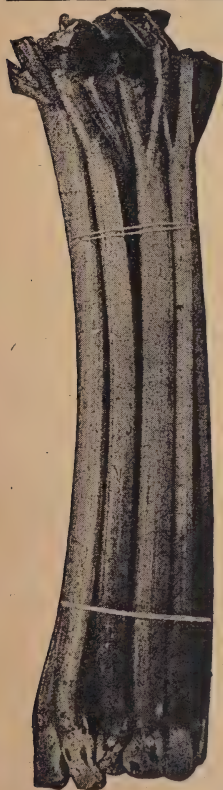
PIE PLANT OR RHUBARB The first vegetable of Spring. Contains an abundance of vitamins A and C. This excellent healthful vegetable is very inexpensive and easy to grow yet a profitable investment. Wonderful for canning, pies and sauces. Order now as Spring is the ideal time for rhubarb.



Washington Asparagus

GIANT RED McDONALD RHUBARB

The finest and highest yielding rhubarb grown. Giant red, tender stalks two or three times larger than common rhubarb. McDonald never seeds and while it is Spring's earliest vegetable the stalks stay tender and juicy for months. As fast as you remove the stalks others take their place; a tremendous yield, unsurpassed for canning and cooking. Once planted it produces a life time. Spring Hill guarantees true imported strain grown from hand cut division of crown plants. Very scarce, supply limited. Catalog number 17S4A12, 75¢ each; 3 for \$2.15.



NEW RUBY RHUBARB Without exception the reddest, most tender, highly flavored rhubarb. Like McDonald does not seed and the stalks which are solid red from the foliage to the ground stay sweet and tender all summer long. Most highly colored and sweetest rhubarb for canning. Excels all other varieties for color, flavor and tenderness. Spring Hill sells only hand cut divisions from crown plants. The true strain is far superior to seedlings and costs more to grow. Order early, only 400 plants for sale this year. Catalog number 17S4A13, 80¢ each; 3 for \$2.25.

LINNEAUS RHUBARB The standard commercial variety. A splendid hardy, healthy, dependable strain, grown from re-selected seed. 1 yr. hand graded whole roots, Catalog number 17S4C14, 3 for 59¢; 6 for \$1.00; 12 for \$1.75. 2 yr. hand graded whole roots, catalog number 17S4B14, 3 for 85¢; 6 for \$1.50; 12 for \$2.75. 3 yr., Giant crowns, will bear this year, catalog number 17S4A14, 50¢ each; 3 for \$1.25; 6 for \$2.25.

MALINER KREN HORSE RADISH Famous for vigorous growth and crisp snappy goodness. You'll prefer the fresh white home grown product. New Bohemian variety. Noted for enormous yields of extra large white roots. Strong plants you can dig this fall, catalog number 17S4A17, 3 for 50¢; 6 for 85¢; 12 for \$1.60.



Rhubarb or Pie Plant

HOME GROWN *Fruits*

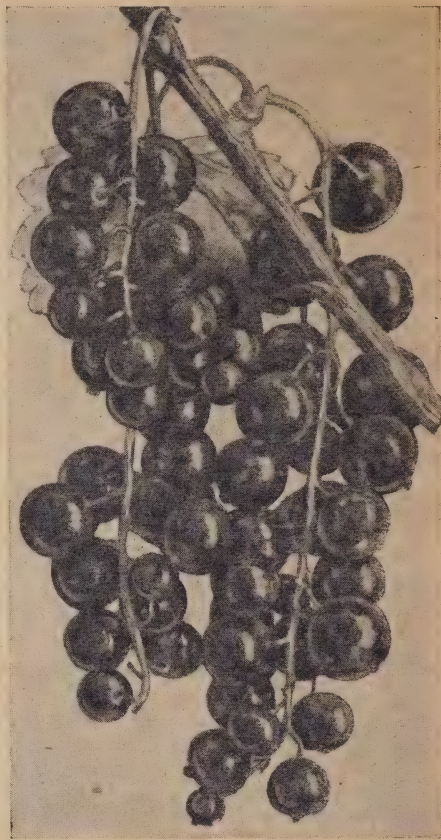
FOR HEALTH — FOR PROFIT

NEW RED LAKE CURRANT Originating in the far north, this new currant has been tested in many different localities with outstanding and favorable results. It promises to replace other varieties for commercial and home use because of its vigor and productiveness, and large red fruit. Order early as supply is limited. 2 yr., catalog number 18S4B65, 3 for \$1.15; 10 for \$2.95. 3 yr. XX bearing age, catalog number 18S4A65, 55¢ each; 3 for \$1.50; 10 for \$4.50.

RED CROSS CURRANT Beautiful large clusters of fiery red fruit of unexcelled flavor and quality. Red Cross is a vigorous grower and producer. 3 yr. XX bearing age, catalog number 18S4A66, 50¢ each; 3 for \$1.35; 10 for \$4.15.

RED JACKET GOOSEBERRY A dependable and productive hardy variety. The highly colored red berries are large, sweet and of excellent quality. Prized for cooking and canning. 2 yr., catalog number 18S4B70, 60¢ each; 3 for \$1.65; 10 for \$4.95.

DOWNING GOOSEBERRY One of the largest fruiting varieties. This vigorous growing variety is unsurpassed for yields, size, and quality. Extra large green and golden fruits. A leading commercial variety. 2 yr., catalog number 18S4B71, 60¢ each; 3 for \$1.65; 10 for \$4.95.



New Red Lake Currant

VALUE!

Maliner Kren HORSERADISH



Famous for crisp, snappy goodness. Horseradish is very easily grown. You will prefer the fresh home-grown product to that sold over the counter. New Bohemian variety. Noted for enormous yields of extra large white roots. Strong plants you can dig this fall, catalog number 18S4A17, 3 for 50¢; 6 for 85¢; 12 for \$1.60.



New Giant Blueberries

GIANT BLUEBERRIES

(U. S. Department of Agriculture)—New cultivated varieties famous for size, flavor, profit and beauty. Large clusters of pink buds which open into white bell-shaped flowers followed by the sapphire blueberries in June often as large as grapes. Four plants in your yard will furnish you with blueberries for pies throughout the season. We offer Rubel and Jersey, the two leading varieties. Plant 2 or more plants for cross-pollination necessary for good yields.

Blueberry Prices	Catalog No.	2 for	4 for	6 for	12 for
2 yr. well branched, 1'	18S4C75	2.35	3.95	5.40	10.20
3 yr. well branched, 1½'	18S4B75	2.95	5.25	7.20	13.80
4 yr. bearing age, 2-3 ft	18S4A75	3.95	7.15	9.60	18.00

Acid Peat Moss For Blueberries

Blueberries prefer Acid soil with abundance of organic matter as rotted manure, peat or compost. SPRING HILL offers and recommends Acid Peat Moss for Blueberries. Highest grade Horticulture Acid Peat, catalog number 18S4-76, \$1.00 per bag; 3 bags \$2.50.

GUARANTEED PLANTS *Buy With Confidence*

The OLDEST and BEST COSTS LESS NOW

Special Offer Reduces Price

Send this coupon with 50c and get American Poultry Journal, the Oldest and Best, for three years. That is less than the price of one egg a month, and one idea from it may mean dozens of additional eggs from your flock. For those who wish merely to get acquainted with this best source of poultry information, we offer a 15 months' trial subscription for 25c.

Better Than a Big Poultry Book

There is more valuable and timely poultry information in 10 issues than in a 300 page book because the editors have many years of experience and know what problems poultry raisers have. Any one of the articles shown at the left or the scores of others may save you from losing big money. Make sure you are right—read the American Poultry Journal.

Free Advice to Subscribers

If your problem does not happen to be discussed in American Poultry Journals you receive, write to our Service Department. You will get a prompt reply from an expert poultrvman.



3 YRS.
50¢

We Recommend — **GIFT SUGGESTION**
Send a year's subscription to friends. The publishers will mail Gift Cards with your name as Donor if you will request it on a separate piece of paper.
Spring Hill Nursery

Coupon on other side SAVES YOU MONEY!



Educational Color Pictures

The above miniature composite illustrates various full page (8" x 11½") colored pictures reproduced in American Poultry Journal, together with articles on the origin and history of the breeds. Plans call for a complete series (about 100 varieties) during the fall and winter months over a period of several years which will make a beautiful, valuable breed encyclopedia of all the leading breeds. In addition, colored pictures illustrating the principal diseases affecting poultry will also appear in several issues. Use the coupon on the right and subscribe for 3 years right now. Your favorite breed may be the next to be shown.

MONEY BACK GUARANTEE If after reading 3 issues of American Poultry Journal, you think you didn't get your money's worth of poultry information, write a letter telling why you feel that way and upon receipt of that letter your subscription payment will be cheerfully refunded.

This Offer Valid Only in the United States

American Poultry Journal, 536 S. Clark St., Chicago

Enclosed find 50c for Enclosed find 25c for your
 your magazine for 3 yrs. magazine for 15 months.

New Order
 Renewal

Name _____

Address _____

Town _____ State _____

SPECIAL PRICED SMALL FRUIT

GROW PEANUTS IN THE NORTH

It's Interesting, Educational and Profitable.

IMPROVED EARLY SPANISH

You can grow your own peanuts in the North. For best results plant in light soil. Lime soil if acid. Shell nuts carefully so as not to break skin and plant in rows 3 feet apart, spacing shelled nuts 8 to 10 inches apart in the rows. If hill planted space 16 inches by 16 inches. Cultivate freely throughout the growing season. Dig before killing frost and hang vines where they can dry and cure. Peanuts are shipped in shell to prevent damage to seed. Catalog number 19S4A393, 1 pint 30¢; 1 quart 50¢; 3 quarts \$1.10; 6 quarts \$1.95.

PERSIMMON

A beautiful dwarf tree with handsome glossy foliage. Shade and beauty for you, fruit for the table. 2 yr., catalog number 19S4C388, 2 ft. tall, 2 for 60¢; 6 for \$1.50. Catalog number 19S4B388, 4 ft. tall, 75¢ each; 3 for \$2.00.

LUCRETIA DEWBERRIES

The first berry to ripen—ten days to two weeks ahead of blackberries. The large Lucretia Dewberries bring a big market price and are a source of real enjoyment in a home garden. Practically disease free and of easy culture. Unexcelled for eating and canning. New Low Prices—1st class No. 1 size, catalog number 19S4A337, 6 for 60¢; 12 for \$1.00; 25 for \$1.98; 100 for \$6.95.

SAGE

Dried leaves prized for seasoning. Sage leaves are becoming very difficult to purchase. The attractive blue foliage makes sage a very ornamental as well as a useful plant for your garden. A permanent and valuable plant for your garden, easy to grow. 2 yr. field grown clumps, catalog number 19S4A394, 40¢ each; 3 for \$1.10; 6 for \$1.95. 1 yr., catalog number 19S4B394, 30¢ each; 3 for 75¢; 12 for \$2.65.

AMERICAN CRANBERRY BUSH

(*Viburnum Americana*)—Spring Hill offers hybrids of large fruiting heavy yielding types selected for fruiting. Plants are recommended by U. S. D. A. 2 yr., 1½ to 2 ft., catalog number 19S4A207, 30¢ each; 3 for 75¢; 12 for \$2.70; 25 for \$4.95. Bearing age, 4 yr., 3 ft., catalog number 19S4B207, 60¢ each; 3 for \$1.65; 12 for \$6.30; 25 for \$12.50.

BLACKBERRY ELDORADO

The best commercial blackberry. After once fruiting, Eldorado berry growers discard other varieties. It is very hardy, claimed to have no equal in this respect. Fruit very large, jet black, good shipper, good quality, and a great producer. 1st size, No. 1, catalog number 19S4A338, 6 for 90¢; 12 for \$1.45; 25 for \$2.35; 50 for \$4.40; 100 for \$7.95.

NEW ALFRED BLACKBERRY

(The blackberry without a core)—Mammoth in size, often measuring three inches around and two inches long. New Alfred ripens early, about a week ahead of other kinds. It is noted for absence of seeds and core, also for its size and delicious, sweet flavor. 1st size, No. 1, catalog number 19S4A339, 6 for \$1.00; 12 for \$1.75; 25 for \$2.75; 50 for \$4.65; 100 for \$8.25.

NEW THORNLESS BLACK-BERRY

A sport or mutation from the regular blackberry, almost identical in size, shape and color. However, the berries are not as good for shipping but for local markets or home use they are far superior because of their extra sweet flavor and the well shaped almost seedless fruit. The canes are entirely thornless and smooth. Catalog number 19S4A340, 3 for 75¢; 5 for \$1.00; 10 for \$1.75; 25 for \$2.95. (Supply limited.)

5 for
\$1.00



Improved Early Spanish Peanuts

AT A BIG SAVING

HARDY CHIVES

(*Allium Schoenoprasum*)—A hardy, onion-like plant that grows each year without replanting or seeding. Indispensable for seasoning salads, omelets, etc. Frequent cutting can be made throughout the season; the plants which are cut making delicate tender growth immediately. Clumps, catalog number 19S4A16, 2 for 41¢; 6 for 95¢.



Hardy Chives

COTTON

Interesting and educational to grow in the North. Plant seed and keep in sunny window until danger of frost is past. Then transplant in your garden. The ornamental plants bloom all summer and are filled with attractive white cotton balls in fall. Seed, large pkt., 15¢; 3 pkts. 35¢.

THE YOUNGBERRY

The Youngberry has achieved the greatest success commercially and in the home garden. A heavy yielder of attractive, large, dark wine-colored berries. The high quality fruit is fine for canning and its rich cherry-colored juice. Youngberries are hardy but do best in states of same latitude as Ohio and South.



THORNLESS YOUNGBERRY

Identical to above except canes are thornless, making it more pleasant, easier and cheaper to harvest and work with. Also thornless youngberry has proven more winter hardy and higher yielding.

YOUNGBERRY PRICES:	Catalog Number	3	6	12	25	100
Thornless Youngberry	19S4A342	.85	1.50	2.75	5.50	19.50
Youngberry	19S4A341	.65	.90	1.56	3.00	9.50

1¢ Sale

1¢ BUYS AN EXTRA ARTICLE

BIG SAVINGS



Chinese Elm

CHINESE ELMS The true hardy, fast-growing Northern strain. Noted for rapid growth and ability to grow in all soils. Fastest growing and most popular shade tree. **Big trees, 7 ft. tall, Catalog number 20S4B700, \$1.50 each, SALE PRICE, 2 for \$1.51.**

TOM THUMB IRIS Miniature darlings not over 6 to 9 inches tall that often have over 100 blooms to a clump. Excellent for borders and lovely flowers. Your choice of the following colors: Yellow, blue, purple, white, reddish-violet. **Catalog number 20S4A451, 35¢ each; SALE PRICE, 2 for 36¢; 10 for \$1.65.**

NEW FALL BLOOMING IRIS This new race of twice blooming iris flowers in Spring and Autumn. Latest improved strains at tremendous savings. Your choice, White, Blue, Yellow and Dark Violet. **Catalog number 20S4A450, 65¢ each; SALE PRICE, 2 for 66¢; 12 for \$3.45.**

BLUE SPRUCE Good blue spruce commands the highest prices. The most beautiful and colorful of all evergreens. Guaranteed reselected individually, dug, hand graded. **5 years old, 8 to 12 inches tall. Catalog number 20S4D100, 97¢ each; SALE PRICE, 2 for 98¢.**

CHIVES (*Allium Schoenoprasum*)—A hardy, onion-like plant that grows each year without re-planting or seeding. Indispensable for seasoning salads, omelets, etc. Frequent cutting can be made throughout the season, the plants which are cut making delicate tender growth immediately. **Catalog number 20S4A16, clumps, 40¢ each; SALE PRICE, 2 for 41¢.**

ELBERTA PEACH Juicy golden yellow free-stone. A Big Money Maker. Large 2 yr. well branched plants. Bears 2nd or 3rd year. **2 ft., Catalog number 20S4D303, 60¢ each; SALE PRICE, 2 for 61¢.**

JUNIPER PFITZERIANA Pfitzer is the most satisfactory and popular of all spreading Junipers in this country. Picturesque, arching branches. Handsome silver green foliage. **2 yr. transplants, 6 to 8 inches, Catalog number 20S4D101, 50¢ each; SALE PRICE, 2 for 51¢.**

GHOST PLANT

(*Silver King Artemisia*)—Misty mixer for beautiful bouquets. Silver King is ideal for floral arrangement or is lovely when dried and used in winter bouquets. **Strong 2 year,**

Catalog No. 20S4A404

32c each

SALE PRICE

2 for 33c



RED LEAVED BARBERRY Enjoy the bright red foliage of these plants the entire summer. Plant in full sunlight for best coloring. Among the finest shrub introductions of recent years. Striking as a hedge. Government inspected, no restrictions. **Catalog number 20S4C201, 45¢ each; SALE PRICE, 2 for 46¢; 10 for \$1.95.**

DOUBLE TUBEROSE

Lovely large waxy, white flowers that glisten like marble. Prized for superb fragrance, cutting and beauty in the garden. Not hardy, dig and store during winter.

Catalog number 20S4A615

SALE PRICE 2 FOR



10 for 80c



Tuberose

SPRING HILL NURSERIES... Horticulture Specialists & Consultants... Tipp City, O.

1¢ Sale

1¢ BUYS AN EXTRA ARTICLE

BIG SAVINGS



Purple Wistaria

PRINCE OF WALES VIOLETS

Fragrant—Hardy—Everblooming—The best English violet. The plants were filled with blooms when killing frosts put them to rest for the winter. Thrive in sun or shade. Heavy plants, catalog number 21S4A426, 45¢ each; SALE PRICE, 2 for 46¢.

AMER. BITTERSWEET

A beautiful hardy vine, easy to grow, filled with orange and gold berries each Autumn. Extra hardy and fast growing. Catalog number 21S4B801, 45¢ each; SALE PRICE, 2 for 46¢.

AMUR MAPLE

Handsome dwarf shrub like tree from China with brilliant red autumn foliage. Very attractive. 3 ft., 2 yr., catalog number 21S4A725, 60¢ each; SALE PRICE, 2 for 61¢.

WISTARIA PURPLE

Very fast growing. It blooms quite young. Magnificent with its drooping clusters of dark lavender shaped flower clusters often a foot long. Regular 3 yr. size, an extra big value at this sale price, catalog number 21S4C800, 55¢ each; SALE PRICE, 2 for 56¢.

DOUBLE HOLLYHOCKS

Most vivid-colored hollyhocks hybridized and improved for size, color, shape of blooms. Disease resistant strain with many new colors. Catalog number 21S4B431, 30¢ each; SALE PRICE, 2 for 31¢.

BLACKBERRY LILY

The elegant flowers are a combination of old gold, bronze, and copper suffused with distinct red dots. They are followed by glistening clusters of black seeds resembling blackberries. Is very hardy and will grow in any soil. NOW, 2 yr.,



Blackberry Lily

Catalog No. 21S4A664

26c each

SALE PRICE

2 for



INDEX PAGE 3
FREE PLANTING INSTRUCTIONS
WITH ORDER OF \$1.00 OR MORE

SPIREA VAN HOUTTEI

Commonly called Bridal Wreath. The flowers are in flat clusters usually an inch or more across produced on spreading, pendulant branches. Plants a mass of white when in full bloom. The most popular and most planted of all hardy shrubs. Easy to grow, does well in sun or shade, good or poor soil. Catalog number 21S4C200, 32¢ each; SALE PRICE, 2 for 33¢; 10 for \$1.45.

Red Bud Cercis Canadensis

RED BUD CERCI CANADENSIS—

Why this ornamental small tree is not more generously used is a mystery. Serenely radiant in April and May when its black branches are covered with bright rosy pea-shaped flowers.

Catalog No. 21S4G707

48c each

SALE PRICE

2 for



Red Bud

BIG VALUES IT WILL PAY YOU TO READ ALL OF THEM!

Dahlias of Renown

THE NOBILITY OF DAHLIAS

SEE THOSE
LOW PRICES

WM. HOGAN Famous for its unusual color of brilliant garnet red tipped with white. Always attracts attention. A good bloomer and grower. The greatest dahlia in its color. **No. 1 hand trimmed crown roots guaranteed to flower this summer, catalog number 22S4A575, 49¢ each; 3 for \$1.35.**

ROBERT J. RIPLEY (Informal Decorative) — One of the largest dahlias in existence. An ideal growing variety famous for immense 12 inch flowers; strong stems, abundance of blooms; and healthiness. Blazing violet-red with pink suffusions. Display this magnificent giant. Compare Spring Hill's low price. **No. 1 hand trimmed crown roots guaranteed to flower this summer, catalog number 22S4A576, 95¢ each; 3 for \$2.70.**

MISS OAKLAND Greatest white formal decorative dahlia. Excellent, pure white flowers perfect in every respect. Unsurpassed in its class for cutting, exhibition. Strong stems and vigorous and healthy grower. **No. 1 hand trimmed crown roots guaranteed to flower this summer, catalog number 22S4A577, 75¢ each; 3 for \$2.10.**

HILLCREST MANDARIN Tremendous oriental red. A prize winner that blooms early. Good healthy informal decorative variety. Rated for size and color. **No. 1 hand trimmed crown roots, guaranteed to flower this summer, catalog number 22S4A578, 45¢ each; 3 for \$1.15.**

ELINOR M. RADDELL Lovely shell-pink shading to deep rose at center. Excellent clean growing sturdy variety. Awarded certificate of merit. It is very beautiful, informal decorative dahlia. **No. 1 hand trimmed crown roots guaranteed to flower this summer, catalog number 22S4A579, 70¢ each; 3 for \$1.95.**

BLUE RIVER (Formal decorative)—French blue superbly blended with violet. Striking clear color tones. Famous for size, good strong stem, magnificent color and vigorous growth. The best blue dahlia in existence. **No. 1 hand trimmed crown roots guaranteed to flower this summer, catalog number 22S4A580, \$1.00 each.**



Robert J. Ripley

DIAMOND DAHLIA SPECIAL

Finest giant exhibition dahlias by color. Guaranteed leading named varieties. Your choice of six leading colors.

RED ORCHID GOLD
PINK WHITE BRONZE

3 of a color 60¢
6 of a color \$1.00

NOTE: Less than three of a color not labeled.
Catalog number 22S4A586



SAVE! ORDER BY COLOR

POMPON OR BOUQUET DAHLIAS

Favorites for fanciers and cutting. Easy to grow compact plants with perfect miniature blooms that can be cut and cut again from July till frost. Plant now and you will be rewarded with an abundant and endless supply of beautiful flowers this summer.

CARDINAL—Flaming fiery scarlet. Vigorous and free blooming.

PURPLE GEM—A deep lavender almost violet. Outstanding color and flowers.

MORNING MIST—Nice long stems. White with lovely rosy-lavender center.

YELLOW GEM—Bright sunny canary yellow of fine form winner.

LITTLE BO-PEEP—Primrossettipped bright carmine. Constant prize winner.

ROSA WILMOUTH—A lovely light rose pink. Excellent color and profusion of flowers.

Choice of above pompon or bouquet dahlias. **No. 1 hand trimmed crown roots guaranteed to flower this summer. Catalog number 22S4A585, 30¢ each; 3 for 75¢; 6 for \$1.35; 24 for \$4.75.**



Pompon or Bouquet Dahlias

AT A
BIG
SAVING

GUARANTEED PLANTS Buy With Confidence

Stately Lillies **HARDY QUEENS OF THE GARDEN**

GROWN IN AMERICA * * * GUARANTEED !! to bloom, disease free, Government inspected winter hardy bulbs that are easy to grow.

FIERY TORCH LILY (Elegans Atroranguinum)—Splendid erect funnel like flowers whose petals resemble tips of flame. Very hardy, healthy and easy to grow. Blooms June and July, 12 to 18 flowers a season. Blooming size 4 to 5 inch bulbs, catalog number 23S4A607, 30¢ each; 3 for 90¢; 10 for \$2.45.

BEAUTIFUL CORAL LILY (Tenuifolium) Native of Siberia, with an abundance of brilliant, scarlet, waxy flowers gracefully arranged on strong stems two feet high. Very popular and hardy. Catalog number 23S4A602, jumbo 3 to 4 inch blooming size bulbs, 35¢ each; 3 for 90¢; 6 for \$1.65.

LEMON LILY The perennial lily supreme. A hardy perennial, not a bulb. A garden favorite that will always be in demand. Masses of beautiful clear lemon-yellow lily blooms in June and July. One of the hardiest and easiest lilies to grow. Thrives in sun or shade. SAVE at Spring Hill's low price. Catalog number 23S4A606, 3 for 50¢; 6 for 90¢; 12 for \$1.60.

MAGIC LILY IT POPS OUT OF THE GROUND LIKE MAGIC
The only Hardy Amaryllis grown that will withstand 30 degrees below zero. This sensation of the flower world is surprisingly beautiful. Clusters of from 5 to 12 immense dubonnet flowers overcast with soft rose on 18 inch stems. Blooms each fall. It is perfectly hardy in far North, is easily grown and will multiply. Catalog number 23S4A608, \$1.00 each; 3 for \$2.65.

DOUBLE TIGER LILY Unique double flowers of lovely salmon-orange handsomely marked and splashed with deep velvety purple spots. A strong grower bearing many flowers to a stalk. The best double lily. Blooming size 4 to 5 inch bulbs, catalog number 23S4A609, 35¢ each; 3 for 90¢.

MEXICAN SCARLET LILY (Sprekelia)—Brilliant scarlet flowers 3 to 4 weeks after planting this Spring. A streamlined beauty of intense color good for a pot plant as well as the garden. Large blooming size, catalog number 23S4A605, 45¢ each; 3 for \$1.15.

NEW DREAM LILY (Phillipeneuse Formosaum)

New and exceedingly popular, often named hardy Easter lily. The lovely long, white trumpet-like flowers have a distinct and beautiful pale emerald throat. 3 to 4 feet. Blooming size 4 to 5 inch bulbs, catalog number 23S4A601, 48¢ each; 3 for \$1.25; 6 for \$2.35.



New Dream Lily

FAMOUS REGAL LILY The best known and most popular lily of all. Easy to grow and sure to bloom. The beautiful blooms are white flushed with pink with creamy-golden throats. The delightful perfume of this lovely lily pervades the garden in mid-season when scene and profusion of bloom are important. Blooming size 4 to 6 inches around, catalog number 23S4A600, 3 for 60¢; 6 for \$1.00; 12 for \$1.75. 6 to 8 inches circumference, 3 for \$1.00; 6 for \$1.75; 40¢ each.



Famous Royal or Regal Lily

23

NEW SUNSET LILY (Pardalinum Giganteum)—An amazing new lily with the brilliance its name implies. This new beauty whose blazing scarlet petals are sprinkled with a deluge of beautiful chocolate dots. Grows 5 to 7 feet tall and gives an abundance of blooms throughout July. Heavy blooming size bulbs, catalog number 23S4A603, 50¢ each; 3 for \$1.35; 6 for \$2.35.



Sunset Lily



TIGRIDIAS

Sacred Tiger Lily

SACRED TIGER LILY (Tigridia Pavonia)—Striking in its beauty, gorgeously dotted with brilliant markings. The large continuous blooming flowers open their petals with the rising sun and die at sunset, blooming anew day after day throughout the summer. Sacred to the ancient Aztec sun worshippers. Catalog number 23S4A610, 3 for 50¢; 6 for 85¢; 12 for \$1.45; 50 for \$5.45.

12 for
\$1.45

World's Favorite Cannas

Best Large Flowering Varieties For Summer Bedding

ECONOMY PRICED CANNAS

No finer at any price. All top quality, guaranteed.

CITY OF PORTLAND Best vivid pink. Rare and beautiful variety with massive flowers in abundance. Lustrous green foliage. Height 3½ ft. Catalog number 24S4A565.

RED KING HUMBERT Giant blazing red. Bronze foliage. 4 ft. tall. Catalog number 24S4A566.

THE PRESIDENT The greatest of all cannas. First to bloom, enormous, intense, fiery scarlet. Green foliage. Height 3½ ft. Catalog number 24S4A567.

WYOMING Immense flowers of fiery orange which contrast superbly with rich purplish bronze foliage. Height 5 ft. Catalog number 24S4A568.

YELLOW KING HUMBERT Attractive lemon yellow, spotted red. 4½ ft. tall. Catalog number 24S4A569.

RICHARD WALLACE Extra large canary-yellow. Green foliage. 3½ ft. tall. Catalog number 24S4A570.

Any above varieties of cannas, 1st size, 3 to 5 eye, No. 1 hand-picked roots individually labeled, 3 of a kind 48c; 6 of a kind 85c; 12 of a kind \$1.45.



CITY OF PORTLAND

CIRCLE CANNA BED SPECIAL A colorful circular canna bed 7 ft. in diameter requires 20 plants. 12 of Richard Wallace in 1st row. 6 of President in second row, 2 of Wyoming in center row. No. 1 hand-picked roots, 3 to 5 eye, regular \$2.30 value. **Collection No. 2416, ALL 20 INDIVIDUALLY WRAPPED. \$1.95**

Peonies for MEMORIAL DAY



Peony Therese

AMERICAN BEAUTY Large double crimson red. Resembling American Beauty rose for color. Famous for size, form and color of bloom. Extra good early free flowering cut flower variety. 2 yr., 3 to 5 eye plants, catalog number 24S4A550, \$1.10 each; 3 for \$3.15.

PRIMEVERE This famous yellow peony will increase your garden pleasure and interest. Distinct, creamy-white guard petals enclose a large ball of lovely sulphur yellow. Mid-season. Catalog number 24S4A556, \$1.75 each. Supply limited.

KARL ROSENFELD A strikingly beautiful variety with very large, glowing, crimson blossoms. A strong hardy grower and profuse bloomer that blooms in mid-season. A wonderful rose type fragrant variety desirable as a cut flower, show or garden variety. 2 yr., strong 3 to 5 eye plants, catalog number 24S4A553, 95¢ each; 3 for \$2.65.

SOLANGE Distinct and extra high rated peony. A lovely delicate blend of golden buff, salmon-orange and waxy white. Free blooming, large, double, rose type. Catalog number 24S4A555, \$1.65 each; 3 for \$4.65.

ANOMALA Fine new extra early blooming peony. The most attractive cut leaf fern-like foliage is beautiful in your garden all season. Brilliant red flowers with salmon-orange centers. New and scarce. 2 yr. large roots, catalog number 24S4A557, \$1.60 each; 3 for \$4.50.

THERESE Highest rated and considered the best pink peony. A beautiful old rose color with immense double flowers on strong stems. Catalog number 24S4A554, \$1.75 each; 3 for \$4.95.

MONS JULES ELIE Immense flesh pink with luminous silver sheen. The prominent guard petals enclose a lovely ball of incurved petals resembling a huge chrysanthemum. Early blooming, fragrant with strong stems. Catalog number 24S4A552, 85¢ each; 3 for \$2.40.

PHILIPPE RIVOIRE
 Rich velvety maroon; fragrant; a glorified and magnificent double. Giant blooms of deep, rich crimson maroon. Are almost black with glowing velvet like color tones of crimson. Greatly admired and considered the finest red by famous peony growers and fanciers. Richly rose scented. Catalog number 24S4A558, \$2.15 each; 3 for \$6.25.

AMERICA'S BEST *Large Flowering "GLADS"*
BOUQUETS ALL SUMMER



MIXED GLADIOLUS

Springhill's Guaranteed Rainbow Mixture

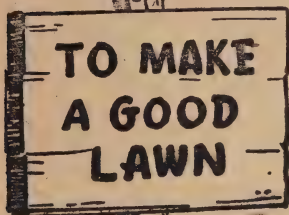
Every bulb guaranteed the loveliest and largest flowering choice blooming size, chosen from our high priced varieties. If bought separately at regular named variety prices would cost as much as \$4.00 or more. GUARANTEED to contain 20 or more varieties of red, yellow, white, pink, smoky, and salmon. Early and late blooming. (No Primis.) A gorgeous display of glorious color at tremendous savings. Offer No. 2510.

**6 bulbs 25¢; 12 bulbs 39¢; 24 bulbs 69¢;
 48 bulbs \$1.15; 100 bulbs \$1.95**

Spring Hill's Named Varieties of Gladiolus see Pages 26 and 27.

QUALITY GRASS SEED

*A Beautiful Lawn
 adds to the charm of
 your home*



IT PAYS TO BUY THE BEST FOR ECONOMY & RESULTS

You too may have a beautiful inexpensive lawn when you buy grass seed from Spring Hill. Early March to late May is the ideal time for renovating and making a new lawn. Inferior seed is costly because labor of preparation is often wasted. Spring Hill only uses highest quality seed and the difference in price is due to proportion or quantity of expensive seeds in each mixture. Sow 1 pound grass seed to 200 square feet. Complete planting instructions included with each shipment or order of grass seed.

FOR BEST AND MOST ECONOMIC RESULTS

Use FANCY KENTUCKY BLUE to reseed old lawns. SPRING HILL'S DELUXE EVERGREEN mixture for quick, beautiful and permanent lawn. SPRING HILL'S SHADY LAWN MIXTURE for shady locations. STANDARD EVERGREEN MIXTURE for sturdy wear resisting economical turf.

FANCY KENTUCKY BLUE GRASS

Our most dependable and hardiest easy to grow variety. Recommended for reseeding old lawns and pastures. It is economical to buy finest weed-free, high germinating seed. 1 lb. 50¢; 5 lbs. \$2.35; 25 lbs. \$9.95; 100 lbs. \$37.50.

SPRING HILL'S DELUXE EVERGREEN MIXTURE

America. Highest germinating fresh crop seeds with more seeds per pound and practically no weed seed or inert matter. This famous blend is the result of years in testing formulas. Plant for a quick sturdy turf. You cannot buy better or cheaper seed considering number of seeds per pound. 1 lb. 70¢; 3 lbs. \$1.95; 10 lbs. \$5.95; 25 lbs. \$14.25; 100 lbs. \$56.00.

STANDARD EVERGREEN MIXTURE

Made from practically the same formula as below. Will produce a beautiful weedless and sturdy lawn in two to four weeks. Permanent for hardy grasses predominate in ratio of four to one considered ideal by experts. Used extensively by parks, cemeteries and golf courses. 1 lb. 55¢; 5 lbs. \$2.45; 25 lbs. \$11.25; 100 lbs. \$42.50.

SPRING HILL'S SHADY LAWN MIXTURE

For areas where lawn has less than six hours of sunlight. A special blend of best shade loving grasses which grow well with little moisture, little sunlight and poor soil. 1 lb. 80¢; 3 lbs. \$2.25; 10 lbs. \$6.95.

Loveliest New **GLADIOLUS**

No Other Flower has the Charm and Beauty of Gladiolus; Largest and Loveliest Favorite Varieties.

COLLECTION No. 2610 Save Over 40%
6 each of 6 Loveliest new gladiolus listed below plus 3 Pearl Harbor, 39 bulbs, not labeled, a certified \$4.81 value for \$3.10.

CARDINAL PRINCE Magnificent large, cardinal red florets of splendid form and placement, 6 to 8 open.

MAID OF ORLEANS 8 florets open at once on tall straight stems. Immense milky-white blooms, cream throat.

BAGDAD Beautiful smoky-rose so large it is in the mammoth class. A grand dependable tall, cut flower, mid-season variety.

COLLECTION No. 2611 Save Over 50%
3 each of 6 Loveliest new glads listed below plus 3 Pearl Harbor, a certified \$3.05 value, all for \$1.49.

PICARDY Enormous, soft, shrimp-pink flowers. Greatest prize winning and most popular variety ever originated.

PELEGRINA Glowing violet or deep purple. Without exception the best variety in its color. Tall and straight.

GOLDEN EAGLE Tall with strong well balanced showy spikes of bright yellow. Good size. Excellent for cutting.

LOVELIEST NEW GLADIOLUS PRICES

Your choice of above varieties individually labeled. Catalog number 26S4A595.

3 bulbs 33¢; 10 bulbs 85¢; 30 bulbs \$2.35; 100 bulbs \$7.25

AMERICA'S BEST *Large Flowering* "GLADS" BOQUETS ALL SUMMER

COLLECTION No. 2612 Save Over 25%
6 each of 12 large flowering glads listed below plus 3 Pearl Harbor, 75 bulbs, not labeled, a certified \$5.89 value all for \$3.49. Save 25%.

VAGABOND PRINCE Iridescent mahogany-buff with vivid scarlet blotch. Many florets open, odd and distinct.

SONATINE Extra tall, excellent for exhibition or cutting. Large beautifully spaced florets of apple blossom pink.

BERTY SNOW Early exhibition; beautiful large, soft lavender with eight or more blooms open at once.

TOKEN Early decorative; peach red or flame salmon with clear yellow throat. Well placed blooms of heavy texture.

OLIVE MARIE Well placed, large florets of deepest, richest buttercup-yellow. One of the most beautiful.

SHIRLEY TEMPLE Immense cream and milky white variety. Warm and gracious ruffled blossoms, excellent for exhibition.

COLLECTION No. 2614 Save Over 40%
3 each of 12 large flowering glads listed below plus 3 Pearl Harbor, 39 bulbs, not labeled, a certified \$3.95 value for \$2.45.

DREAM O' BEAUTY Bright, American Beauty rose color. A vigorous strong grower. Large.

RED PHIPPS Aglow with beauty. Tall with many florets open at once. Earliest bright red.

MARGARET FULTON Clean and distinctive, soft, dark salmon. Early. Excellent for cutting.

APRICOT GLOW Early decorative; of clear warm apricot. Very tall and vigorous. Large well spaced blooms.

FLAMING SWORD Bright, scarlet-red flowers which bloom quite early. Forms gorgeous, tall, strong flower spikes.

DR. C. HOEG (Black maroon)—Decorative mid-season. Richest of all maroons with lovely stem. Rates best in color and class.

AMERICA'S BEST LARGE FLOWERING GLAD PRICES

Your choice of above 12 varieties individually labeled. Catalog number 26S4A596.

3 bulbs 25¢; 10 bulbs 59¢; 25 bulbs \$1.35; 100 bulbs \$4.95

DO YOU KNOW !!

There is a vast difference in the blooming qualities of "Gladioli" bulbs? Spring Hill's Gladiolus are unconditionally GUARANTEED the finest mammoth-flowering disease-free bulbs. None finer at any price. Grown by the world's largest gladioli grower. We have purchased only the most dependable prize winning varieties that bloom best in all sections of America. Save on the world's finest Glads. Guaranteed satisfaction. Large bulbs 4 to 5 inches around; (Not the largest, but the best blooming size). Plant from spring to early summer at 2 week intervals for successive display of blooms all summer.





Cardinal Prince

maid of Orleans

Bagdad

Picardy

Pelegrina

Golden Eagle



Vagabond Prince

Sonatine

Bertie Snow

Token



Olive Marie

Shirley Temple

Dream O Beauty

Red Phipps



Margaret Fulton

Apricot Glow

Flaming Sword

Dr. C. Hoeg



NEW PEARL HARBOR

(8 Championship prizes in two years)
 Named in honor of Pearl Harbor this
 new gladiolus was exhibited by number
 and won wherever exhibited. Luminous
 pure white of immense size, an outstand-
 ing beauty. No. 1 bulbs, 75¢ each; 3
 for \$2.00. FREE with glad bulb orders
 see opposite page.

**New and Glorious
 "Pearl Harbor"**

Free!

Finest GIANT DAHLIAS



Jersey Beauty

JANE GOWL (Informal Decorative)—Excellent dahlia. Lovely autumn tints of gold and purple. (See Color Picture.) Catalog number 29S4A587, 35¢ each; 3 for 85¢.

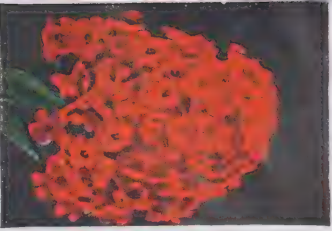
WHITE KING (Formal Decorative)—Magnificent dahlia. Pure white double flowers, extra large and good grower and bloomer. No. 1 roots, catalog number 29S4A588, 38¢ each; 3 for 90¢.

JERSEY BEAUTY (Decorative)—The best form. (See Color Picture.) Extremely beautiful and free flowering. Unsurpassed for its color and type. No. 1 roots, catalog number 29S4A589, 40¢ each; 3 for 95¢.

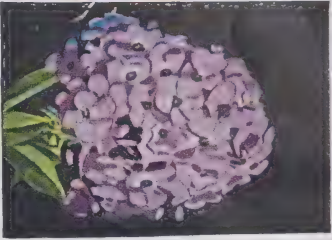
JERSEY BEACON (Formal Decorative) Formed Chinese scarlet flowers with buff reverse. No. 1 roots, catalog number 29S4A590, 40¢ each; 3 for 95¢.

PRIDE OF CALIFORNIA (Formal Decorative)—One of the best reliable superbly formed large deep red, excellent for cutting. No. 1 roots, catalog number 29S4A591, 35¢ each; 3 for 90¢.

MRS. I. DEVER WARNER (Decorative) Beautiful large, upright blooms of abundant color. No. 1 roots, catalog number 29S4A592, 35¢ each; 3 for 85¢.



Phlox Leo Schlageter



Phlox Starlight



Phlox Count Zeppelin



Phlox Morganrood

10 NEW HARDY PHLOX — AMERICA'S CHAMPION COLLECTION

CHIEFTAIN New glowing dark, oriental red with rich velvety colors beyond description.

MORGANROOD Gorgeous cherry-red, distinct beauty. A favorite for color, size, dependability.

SALMON GLOW Soft glowing orange-salmon of astonishing beauty. Profuse blooming.

LEO SCHLAGETER Intense fiery-scarlet. Most brilliant of all phlox.

MOONLIGHT DREAM Extra large, free flowering pure snow white.

Choice of above varieties, 2 yr. best **35c each; 3 for 90c; 6 for \$1.65; 10 for \$2.50** bloom, Catalog No. 28S4A481,

ORDER PHLOX BY COLOR To keep a balanced inventory, phlox by color. Our selection of varieties—your choice of the following: Red, Salmon, White, Pink, Blue. 3 for 75¢, 6 for \$1.25, 10 for \$1.85.



Ranunculus

RANUNCULUS

(Giant Camellia Strain)—Six-pet double blooms with magnificent colors (see color illustration). Splendid for cutting and garden display. Plant in Spring with claws downward two inches deep and 5 to 8 inches apart. Store dry during winter or pot for flowers indoors. Easy to grow, each bulb produces several flowers. Plant liberally at Spring Hill's thrifty prices. Choice No. 1 size, catalog number 28S4A480.

6 for 55c
12 for 95c; 50 for \$3.15

AMERICAN CRANBERRY BUSH (Viburnum Americana)—Spring Hill offers hybrids of large fruiting heavy yielding types selected for fruiting. Plants are recommended by U. S. D. A. 2 yr., 1 1/2 to 2 ft., catalog number 28S4A207, 30¢ each; 3 for 75¢; 12 for \$2.70; 25 for \$4.95. Bearing age, 4 yr., 3 ft., catalog number 28S4B207, 60¢ each; 3 for \$1.65; 12 for \$5.30; 25 for \$12.50.



American Bush Cranberry

EVERBLOOMING BUDDLEIA BUTTERFLY BUSH
Spring Hill's new and improved varieties are far superior to the older kinds. All guaranteed to flower abundantly this summer for you.

SIX BEST BUDDLEIA SAVINGS \$1.75
One each of Dubonnet Charming, Eleanor, Princess Wally, Ile de France and Royal Red. Strong potent plants guaranteed to bloom all this summer for you. A certified \$2.50 Value, one each not labeled. Save Over 28% — 6 for \$1.75.

NEW DUBONNET Tall, fast growing buddleia with large flower spikes in abundance. Dubonnet color or deep crimson-violet that glows in the sunlight.

PINK CHARMING The only true pink buddleia. Extra large, long graceful flower spikes of lovely bright pink. Vigorous and profuse blooming.

NEW ROYAL RED BUDDLEIA see color picture and description page 30.

ELEANOR Large compact striking Eleanor blue flowers. buddleias. Medium tall growing. Highly recommended.

PRINCESS WALLY A new buddleia that is the most free flowering variety we grow. Deep purple flowers with extra large spikes.

ILE DE FRANCE Amazing rich reddish-purple flower blooms from July till killing frosts.



New Buddleia Princess Wally

Your choice of above varieties, catalog number 29S4B-266, strong pot plants guaranteed to bloom this summer, 35c each; 3 for 90c; 12 for \$2.95. 2 yr. No. 1 field grown plants, catalog number 29S4A 266, 55c each; 3 for \$1.45; 12 for \$5.40.

NEW VALUES IN CHEERFUL FLOWERING PLANTS

Distinctive Hardy Flowering SHRUBS

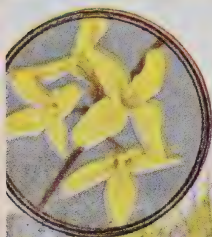
Beautify Your Home For A Lifetime At A Big Savings



Everblooming Dwarf Red Spirea A. W. page 31



Giant Pink Hydrangea P. G. see page 31



Yellow Forsythia (Spectabilis) see page 31



New ROYAL RED BUDDLEIA

Most beautiful of all butterfly bushes. Thrilling flower spikes which glow like sparkling rubies in the sunlight. Strong pot plants will bloom this summer, catalog number 30S4A265, price 75¢ each; 2 for \$1.25. (Other ever-blooming Buddleia Varieties see page 29.)



Fragrant Pink Snowball

FRAGRANT PINK SNOWBALL

(*Viburnum Carlesi*)—Flowers are lovely shell pink changing to white; buds tinted coral-pink. The fragrance is most remarkably pleasing somewhat like Gardenia and it scents the whole garden. Excellent for bouquets, a few blooms will scent the entire home. 3 yr., 1 ft., catalog number 30S4B247, \$1.25 each; 3 for \$3.45. (Supply limited.) 4 yr., 2 ft. blooming size B&B, catalog number 30S4A247, \$4.50 each; 2 for \$8.50.

Low As

\$1.25
Each

Finest HARDY SHRUBS FILLED WITH Beautiful Blossoms

GIANT PINK HYDRANGEA P. G.

The best known summer flowering shrub. Immense panicles of showy white flowers that change to a rose color and remain in good condition for weeks. **1 ft. size, 2 yr., catalog number, 31S4B241; 40¢ each; 2 for 75¢; 3 ft. landscape specimens, catalog number 31S4A241; 70¢ each; 2 for \$1.30; 10 for \$5.95.**

HYDRANGEA HILLS OF SNOW

The flowers are conspicuously white and imposing, similar to the old fashioned snowball in appearance. A lovely dwarf variety for borders. Spring blooming. Pot grown **1 ft. size, catalog number 31S4B242; 25¢ each; 3 for 60¢; Heavy 2 ft. plants, catalog number 31S4A242; 65¢ each; 2 for \$1.20; 6 for \$3.45.**

HYDRANGEA FAMOUS OAK LEAF

(*Quericifolia*)—Famous for its large artistic indented and somewhat ruffled Oak-like leaves which turn to beautiful colors in autumn. Giant flower heads in abundance. A rare and beautiful shrub which grows well in shade or sunlight. **1 to 1½ ft. size, catalog number 31S4B243, 40¢ each; 2 for 75¢; 2 to 3 ft. size, catalog number 31S4A243, 85¢ each; 2 for \$1.60.**

NEW GIANT GOLDEN BELL

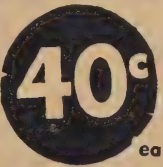
(*Forsythia Spectabilis*) The erect plants have the largest and most colorful intense golden blooms in greatest profusion. Best and showiest of all. Varieties highly recommended. **1½ to 2 ft. plants, catalog number 31S4B224; 28¢ each; 3 for 65¢. Heavy blooming size, 3 ft. plants, catalog number 31S4A224; 55¢ each; 2 plants \$1.00; 6 plants \$2.85.**

GOLDEN BELL FORSYTHIA

This splendid old favorite will light up your garden with glinting masses of yellow very early in the spring before the leaves appear. It may be cut and forced into bloom for winter bouquets. **1 to 1½ ft. plants, catalog number 31S4B223, 25¢ each; 3 for 60¢. Heavy blooming size 3 ft. plants, catalog number 31S4A223, 45¢ each; 2 for 75¢; 6 for \$1.95.**

SMOKE TREE PURPLE FRINGE

(*Rhus Cotinus*) An enhancing tree-like shrub; enveloped in midsummer with show masses of purplish misty flowers resembling beautiful clouds of drifting smoke. Attractive brilliant scarlet and golden autumn foliage. A hardy recognized garden beauty. Special blooming **4 ft. size, catalog number 31S4A222, \$1.00 each; 2 for \$1.85. Blooming size, 3 ft., catalog number 31S4B222, 75¢ each; 3 for \$1.95. 2 ft. size, catalog number 31S4C222, 40¢ each; 2 for 75¢.**



HYDRANGEA GIANT NIKKO BLUE

Hardy—varying in color according to the Hydrogenion concentration of the soil. Immense heads of blue to pink flowers. This semi-hardy Hydrangea survives the winter from New York, Cleveland and South, but needs some winter protection in the North. In acid soil the flowers are deep blue. If alkaline soil the flowers change to pink. **2 yr., 12 to 15 inches, catalog number 31S4A244, 2 for \$1.20; 65¢ each; 6 for \$3.45.**



Nikko Blue Hydrangea



Smoke Tree or Purple Fringe

THE FAMOUS SPIREAS DOUBLE BRIDAL WREATH

(*Spirea Prunifolia Plena*)—Handsome double, early flowering shrub is filled with hundreds of large double pearl button like flowers. The graceful plants have dark green lustrous foliage which turns orange in autumn. The showiest and most attractive spirea. Special **1 ft. size, catalog number 31S4B226, 30¢ each; 3 for 75¢. Heavy landscape size, 2 to 3 ft., catalog number 31S4A226, 70¢ each; 2 for \$1.30; 6 for \$3.95.**

SPIREA VAN HOUTTEI

Commonly called Bridal Wreath. The flowers are in flat clusters usually an inch or more across produced on spreading, pendular branches. Plants a mass of white when in full bloom. The most popular and most planted of all hardy shrubs. Easy to grow, does well in sun or shade, good or poor soil. See pages 36 and 37 for low priced hedging size. **1 to 1½ ft. size, catalog number 31SC225, 3 for 50¢; 10 for \$1.40. 1½ to 2 ft. size, catalog number 31S4B225, 3 for 65¢; 10 for \$1.90. Landscape blooming size, 3 to 4 ft., catalog number 31S4A225, 45¢ each; 2 for 80¢; 6 for \$2.25; 25 for \$8.75.**



Spirea Van Houttei (Bridal Wreath)

Finest HARDY SHRUBS FILLED WITH Beautiful Blossoms

ABELIA EVERBLOOM- ING

A hardy evergreen shrub wonderful for landscaping. The dainty shell-pink flowers (see picture below) are produced abundantly. Glossy foliage remains on the plant all winter. Plants should have winter protection North of Ohio River. 2 yr., 1 ft. size, catalog number 32S4B204, 40¢ each; 3 for 95¢; 12 for \$3.50. Heavy, 4 yr., 3 ft. size, catalog number 32S4A204, 90¢ each; 3 for \$2.55; 6 for \$4.95.

ALTHEA

(Rose of Sharon)—A beautiful fall-blooming shrub when flowers are scarce with hollyhock-like flowers which we offer in the following colors: Double striking violet, double clear white, brilliant double red, and lovely double pink. They are the best. Your choice of colors. 1 to 1½ ft. size, catalog number 32S4B203, 30¢ each; 4 for \$1.00; 12 for \$2.70. 3 yr., 3 ft. size, catalog number 32S4A203, 55¢ each; 4 for \$1.95; 10 for \$4.75.

BARBERRY GREEN LEAF

(Thunbergi)—Most popular shrub. Lovely Autumn coloring of foliage and red fruits all winter. Succeeds well universally in all soils and climates. Rust proof. No Government planting restrictions. 3 yr., 1 ft. size, catalog number 32S4C202, 3 for 55¢; 6 for 90¢. 4 yr., 1½ ft. size, catalog number 32S4B202, 3 for 69¢; 6 for \$1.15. Heavy 2 to 3 ft. size, catalog number 32S4A202, 40¢ each; 3 for \$1.00. Quantity hedging prices and sizes see page 36.

BEAUTIFUL CREPE MYRTLE

Plant this spring and our field grown plants will bloom all this summer for you. Most gorgeous plants filled with masses of awe inspiring blooms throughout the summer are the envy of all who see them. Offered in a rainbow of colors. Needs winter protection north of Virginia. Your choice, Lavender Lady, Watermelon Pink or Crimson Beauty. 2 yr. branched plants, 2 ft. size, catalog number 31S4A205, 70¢ each; 3 for \$1.95; 6 for \$3.75.

AT A
BIG
SAVING

ALMOND

(Rose Bud Flowering)—A great favorite, with lovely double rose-pink flowers in such great profusion. They absolutely fill the dwarf plants. Beautiful and dependable. 1 ft. size, catalog number 32S4B206, 35¢ each; 3 for 90¢; 10 for \$2.75. 3 yr., 2 ft. blooming size, catalog number 32S4A206, 65¢ each; 2 for \$1.20; 6 for \$3.45.

CYDONIA FIREBUSH

(Japonica)—Brilliant fiery orange-scarlet daisy like flowers 1 to 1½ inches in diameter completely fill the branches in early Spring. Spectacular in brilliance and beauty. Guaranteed hand propagated cuttings from choice red strain. Much better than seedling and well worth the little additional cost. 2 yr., 1 to 1½ ft. blooming size, catalog number 32S4B210, 50¢ each; 2 for 90¢; 6 for \$2.55. 3 yr., 3 ft. size, catalog number 32S4A210, 75¢ each; 2 for \$1.40; 6 for \$3.95.

RED LEAF BARBERRY—Description, Sizes, Prices, see Page 36.

INDEX PAGE 3

BEAUTY BUSH

(Kolkwitzia)—Graceful, tall shrubs with arching branches. Thousands of tubular shaped bright pink flowers are produced along the entire length of the branches in clusters. Extremely hardy, easy to grow, highly recommended. 2 yr., 1 ft. size, catalog number 32S4B215, 30¢ each; 4 for \$1.00. 4 yr. blooming size, 3 ft., catalog number 32S4A215, 80¢ each; 2 for \$1.50.

EVERBLOOMING GOLDEN GLOBE

(Double Kerria Japonica)—The double fluffy balls of buttercup gold will contribute vitally to your garden. Especially when planted with Butterfly Bush and Blue Spirea, creating an artistic ensemble of blue and gold all summer long. The exceptional everblooming shrub has attractive bright green stems for winter effect. Guaranteed to bloom this summer. 1 to 1½ ft. plants, catalog number 32S4B211, 45¢ each; 3 for \$1.25.

3 for
\$1.25



Kolkwitzia Beauty Bush



Everblooming Abelia



Everblooming Golden Globe

Springhills Hardy Shrubs

A LIFETIME PAGEANT OF GLORIOUS FLOWERS

BLUE SPIREA (*Caryopteris*)—A rare dwarf plant of unusual beauty. A real acquisition for your garden with an abundance of striking blue blooms from August until winter. Fine for cutting. An aristocrat usually found only in elaborate gardens priced so all can enjoy. Excellent combined with Gold Flower or Golder Globe. Strong pot plants guaranteed to bloom this summer. Catalog number 33S4B213, 37¢ each; 3 for \$1.00; 12 for \$3.60. 2 yr., 1 to 1½ ft. blooming size, catalog number 33S4A213, 60¢ each; 2 for \$1.10; 6 for \$3.15.

37¢



Blue Spirea

GOLD FLOWER (Dwarf Everblooming Hypericum)—Hundreds of flowers 1st season. Handsome dwarf compact plants with glossy, green foliage. Largest everflowering Hypericum. Beautiful planted with contrasting blue shrub. Blooming size pot plants, catalog number 33SB212, 40¢ each; 3 for \$1.10; 12 for \$3.80. Heavy 2 yr. landscape size, catalog number 33S4A212, 55¢ each; 3 for \$1.50; 10 for \$4.75.

ROSE HONEYSUCKLE (*Lonicera Tartarica*)—This is one of the old time favorite shrubs with rose-pink flowers immediately followed by bright scarlet berries which cover the plant. Beautiful foliage all year. Select 2 yr., 2 ft. size, catalog number 33S4B218, 25¢ each; 3 for 60¢; 10 for \$1.75. Heavy landscape blooming size, 3 to 4 ft., catalog number 33S4A218, 60¢ each; 3 for \$1.65; 6 for \$3.15.

FRAGRANT EVERBLOOMING GARDENIA (*Veitchii*)—Enjoy growing lovely Gardenias in your garden this summer and the fragrance of their exquisite, waxy, white blooms indoors all winter. A grand garden and house plant. Not winter hardy north of Virginia. Growing instructions and plant food sent with each order. 8 to 12 inch, catalog number 33S4C250, 40¢ each; 2 for 75¢. 10 to 15 inch, catalog number 33S4B250, \$1.00 each; 3 for \$2.75. Giant 4 inch pot size plants, catalog number 33S4A250, \$2.00 each.

2 for 75¢



Everblooming Gardenia

WINTER BLOOMING WITCH HAZEL (*Hammemalis*)—Be the first in your neighborhood to enjoy the dainty yellow flowers of Witch Hazel in mid-winter. They are not injured even if the temperature goes down to zero. The flowers appearing along graceful branches make a lovely winter bouquet. 1 to 1½ ft., catalog number 33S4B219, 30¢ each; 3 for 75¢. 2½ ft. heavy landscape size, catalog number 33S4A219, 55¢ each; 3 for \$1.50; 6 for \$2.85.

CORALBERRY (*Symphoricarpos Vulgaris*)—Commonly called red snowberry. Attractive arching branches very showy in autumn when the entire plant is filled with thousands of bright coral berries which stay on nearly all winter. Thrives in poorest soil in sun or shade. Select 2 yr., 2 ft. size, catalog number 33S4B221, 25¢ each; 5 for \$1.00; 10 for \$1.75. Heavy landscape size, 3 ft., catalog number 33S4A221, 50¢ each; 3 for \$1.35; 10 for \$4.25.

BURNING BUSH (*Euonymus Alatus*)—Dazzling red foliage in autumn. This handsome and attractive shrub is hardy, grows in sun or shade equally well. The green foliage changes to most brilliant red each fall. Select 2 yr., 1 ft. tall, catalog number 33S4A214, 50¢ each; 3 for \$1.35; 10 for \$4.25.

FRAGRANT MOCK ORANGE (*Philadelphus Cornarius*)—This great favorite is vigorous and easy to grow. Covered in Spring with delightful fragrant, pearly white flowers. 1 to 1½ ft., catalog number 33S4B216, 25¢ each; 3 for 60¢. Heavy blooming size, 3 ft., catalog number 33S4A216, 50¢ each; 3 for \$1.35.

EVERBLOOMING DOUBLE MOCK ORANGE (*Philadelphus Virginal*)—Large semi-double flowers throughout the season. This is a new and wonderful addition to the Mock Orange family. One of the most beautiful shrubs grown and tremendously popular. Select 2 yr., 1 to 1½ ft. size, catalog number 33S4B216, 35¢ each; 2 for 60¢. Heavy landscape blooming size, 2 to 3 ft. plants, catalog number 33S4A216, 60¢ each; 2 for \$1.10; 10 for \$5.25.



Everblooming Double Mock Orange

Finest HARDY SHRUBS FILLED WITH Beautiful Blossoms

GIANT PUSSY WILLOW (Caprice)—French Pussy Willow, not the wild variety. A genuine promise of springtime when it unfolds its large silvery pink catkins 1 to 2 inches long. Cut branches in January and February for delightful indoor bouquets. 2 ft. size, catalog number 34S4B220, 35¢ each; 3 for 90¢; 6 for \$1.65. 3 to 4 ft., catalog number 34S4A220, 70¢ each; 2 for \$1.30.

KASHGAR TAMARIX (Variety Hispida)—This, loveliest of the tamarix, is covered with delicate, bright pink sprays of flowers in July, August and September when shrubs are comparatively bare of flowers. Beautiful silver evergreen-like foliage. 2 ft. size, catalog number 24S4B233, 35¢ each; 3 for 90¢; 6 for \$1.65. 3 to 4 ft., catalog number 34S4A233, 70¢ each; 2 for \$1.30.

AMUR TAMARIX (Variety Amurensis)—Delicate feathery green foliage resembling an evergreen. Covered in Spring with tiny, pink flowers along the branches before the leaves appear. 2 ft. size, catalog number 34S4B234, 30¢ each; 3 for 75¢; 6 for \$1.35. 3 to 4 ft., catalog number 34S4A234, 60¢ each; 3 for \$1.45.

OLD FASHION LILAC (Syringa Vulgaris)—Noted for its fragrance and beauty. Still the choice of most people. The plants are filled with lovely lavender, blooming each spring. Excellent for hedges and landscaping. 3 ft. size, catalog number 34S4A251, 60¢ each; 3 for \$1.65. 2 yr., 2 ft. size, catalog number 34S4B251, 30¢ each; 3 for 75¢; 10 for \$2.25.

STRIKING PERSIAN LILAC (Syringa Persica)—A graceful shrub growing 8 to 10 feet in height. Fragrant mauve pink flowers in large clusters. Blooms all summer long. 2 yr. strong plants, 1 to 1½ ft., catalog number 34S4B253, 30¢ each; 4 for \$1.00. Heavy landscape size, 3 ft., catalog number 34S4A253, 65¢ each; 2 for \$1.20.

FINEST NAMED FRENCH LILACS

LILAC PRESIDENT LINCOLN—Judged by all growers and fanciers the best of its color and class. Lovely wedge-shaped blue. 3 yr., 1½ ft. size, catalog number 34S4B255, \$1.25 each; 3 for \$3.45.

LILAC PRESIDENT GREVEY—Extra large double sky blue. Immense symmetrical flowers. An old and favorite variety. 3 to 4 ft., blooming size, catalog number 34S4B261, \$1.60 each; 3 for \$4.25.

LILAC BELLE DE NANCY—Strong grower, profuse flowering with giant flower trusses of double satiny-rose-pink blooms. 3 to 4 ft. blooming size, catalog number 34S4B259, \$1.75 each; 3 for \$4.80.

LILAC THOMAS JEFFERSON—Giant compact symmetrical flower trusses of deep dark violet. A favorite of striking beauty. 1½ ft. size, catalog number 34S4B256, \$1.40 each; 3 for \$3.90.

LILAC GENERAL SHERIDAN—Double pure alabaster white. Heavy bloomer. Extra choice white variety. 1½ ft. size, catalog number 34S4B258, \$1.25 each; 3 for \$3.45.

LILAC SOUV. LUDWIG SPAETH—Favorite and considered most beautiful red immense flowers in profusion. 1½ ft. size, catalog number 34S4B260, \$1.35 each; 3 for \$3.75. 3 to 4 ft. blooming size, catalog number 34S4A260, \$1.75 each; 3 for \$4.80.

FRENCH HYBRID LILAC Special—Spring Hill imported an outstanding collection of new French lilacs from Europe for propagating purposes. We now have several hundred seedlings from these plants, we cannot guarantee colors, but you are certain to get immense flowers in all shades of blue, violet, pink, red and white. Special. 2 yr., 1 ft. tall, catalog number 34S4B254, 35¢ each; 5 for \$1.45; 25 for \$6.75. 4 yr. heavy blooming size, 3 ft., catalog number 34S4A254, 75¢ each; 2 for \$1.40; 6 for \$3.95.

XMAS SNOWBALL (Viburnum Dilatatum)—Known for its clusters of brilliant red fruits which remain throughout the winter, contrasting beautifully with the white snow. Each Spring the lovely white flowers fill the plants. Handsome deep vivid foliage. A rare variety commanding highest prices. SAVE! 1 to 1½ ft. size, catalog number 34S4A248, 40¢ each; 2 for 75¢; 6 for \$1.95.

DOUBLE CHINESE SNOWBALL A graceful plant with handsome foliage and lovely perfectly round ball shaped flowers. The most beautiful flowering of all snowballs. 1 to 1½ ft. size, catalog number 34S4B249, 40¢ each; 2 for 75¢. 2 to 2½ ft. size, catalog number, 70¢ each; 3 for \$1.95.

OLD-FASHIONED SNOWBALL

(Viburnum Opulus Sterilis)—Always a favorite. Very decorative with its large white flowers in May and bright foliage in the fall. 1 ft. size, catalog number 34S4B246, 35¢ each; 3 for 90¢; 6 for \$1.65. 3 to 4 ft. size, catalog number 34S4A246, 70¢ each; 2 for \$1.35; 6 for \$3.75.

AT A BIG SAVING



Giant Pussy Willow



Kashgar Tamarix



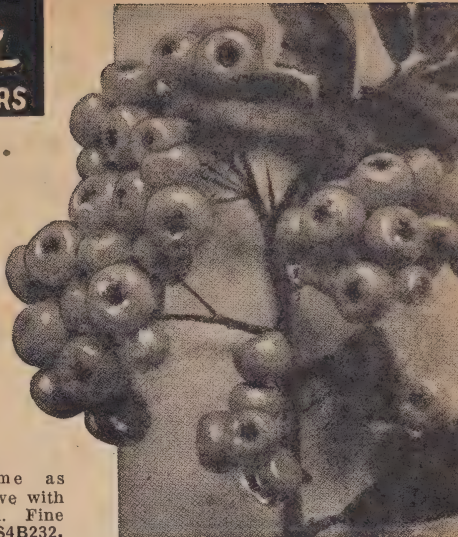
Snowball Viburnum

Springhills Hardy Shrubs

A LIFETIME PAGEANT OF GLORIOUS FLOWERS

SCARLET FRUITED FIRETHORN (Pyra-cantha)

Lalandi—A beautiful evergreen shrub. The large attractive trusses of white flowers are borne in late spring. The deep green narrow leaves are almost smothered with clusters of fiery-orange berries in the autumn lasting into late winter. Excellent in sun or shade. Considered the best all around evergreen shrub in the Northern states. 3 yr. pot plants, catalog number 35S4C140, 9 to 12 inches, 55¢ each; 3 for \$1.45; 10 for \$4.75. 12 to 15 inches, 5 yr., catalog number 35S4B140, \$1.35 each.



Scarlet Fruited Firethorn

ROSE WEIGELA

A choice, vigorous, popular Weigela, which yields an immense number of deep pink trumpet-shaped flowers in June, and bears a scattering of blossoms the rest of the season. Select 1½ ft. plants, catalog number 35S4B231, 30¢ each; 3 for 75¢; 10 for \$2.25. Blooming size, heavy 3 ft. plants, catalog number 35S4A231, 2 for 90¢; 6 for \$2.55.

ROSE WEIGELA SILVER LEAF

Same as above with most attractive silvery-white foliage patterned with green. Fine for contrasts. Select 1½ ft. plants, catalog number 35S4B232, 35¢ each; 2 for 60¢. (Supply limited.) Blooming size, 2 to 2½ ft. heavy, catalog number 35S4A232, 65¢ each; 2 for \$1.20.



Sweet Shrub

EVERBLOOMING RED WEIGELA (Eva Rathke)

—A very lovely shrub covered with deep carmine-red blossoms in Spring and continuing to bloom all season. A semi-dwarf, erect-growing shrub. Select 1 ft. size, catalog number 35S4B230, 35¢ each; 2 for 60¢; 6 for \$1.65. Heavy blooming landscape size, 3 ft., catalog number 35S4A230, 70¢ each; 2 for \$1.30; 6 for \$3.75.

FRAGRANT BUSH HONEYSUCKLE

Handsome foliage that stays on the plant most of the winter. Flowers sweet scented, white or slightly blushed, produced very early. Grows well under most adverse conditions. 1½ ft. size, catalog number 35S4B262, 35¢ each; 3 for 90¢. Blooming age, 3 ft., catalog number 35S4A262, 65¢ each; 3 for \$1.75.

SWEET SHRUB (Calycanthus)

—An unique shrub with large glossy leaves from the axils of which spring odd, spicily fragrant, chocolate-red flowers. Select 1 to 1½ ft. plants, catalog number 35S4B200, 35¢ each; 3 for 80¢. Heavy, 2 ft. plants, catalog number 35S4A200, 70¢ each; 2 for \$1.30; 10 for \$5.95.

SAVE OVER 50% WHEN ADDED TO AN ORDER OF \$5 OR MORE

OFFER EXPIRES JUNE 1st, 1944

BLUE RUSSIAN LILAC

(Syringa Villosa)—This beautiful race of lilacs extends lilac time, blooming 3 to 4 weeks after other lilacs. A dense sturdy compact plant with large glossy deeply veined leaves of distinct beauty. The flowers are a delightful pale blue. 1 ft. size, catalog number 35S4C252, regularly 35¢ each, now with \$5.00 order or more, 13¢ each. 3 for 45¢.



Lilac



SCARLET FLOWER HAWTHORN

(Flaming Fire Tree)—The most brilliant of flowering trees filled with clusters of double blazing scarlet flowers each year. Blooming age, 5 to 7 ft., catalog number 35S4A708, (regularly \$2.75 each.) Now with order of \$5.00 or more only \$1.35 each.

OFFER EXPIRES JUNE 1st, 1944

Everblooming HARDY VERBENA

Attractive plants are continuously in flower from May till killing frosts. A low growing plant 6 to 10 inches tall, excellent for borders, rock gardens and edging. Tremendous savings. Catalog number 35S4A-403. Regularly 30¢ each. Now with \$5.00 order, 14¢ each; 3 for 39¢.



VALUABLE PLANTING INSTRUCTIONS FREE WITH ORDER OF \$1.00 or More

INDEX SEE PAGE 3 ORDER BLANKS PAGES 9A AND 49A

America's Best Hardy Hedges

Beautify with Hardy Hedges! LIVING WALLS OF COLORED FLOWERS AND EXQUISITE FOLIAGE

CALIFORNIA PRIVET Most popular privet, famous for beautiful foliage, rapid growth and adaptability to formal shearing. (Prices and sizes see below.)

AMUR RIVER PRIVET The hardiest of all hedge plants. Beautiful upright growth and makes a compact hedge. Will hold its foliage until the middle of October or later. (Prices and sizes see below.)

THE NEW IBOLIUM PRIVET Very hardy. A cross of California and Amur River Privet. Ibolium has the attractive glossy foliage and other good characteristics of the famous California, along with the extreme hardness of Amur River. (Prices and sizes see below.)

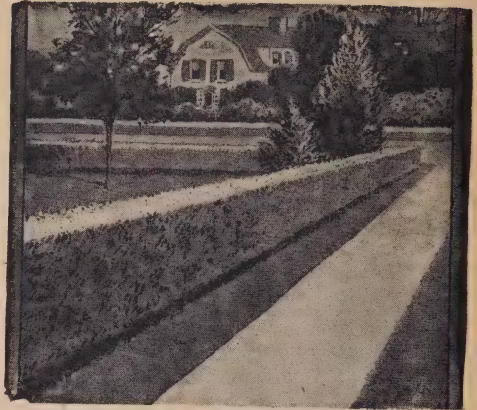
THE FAMOUS REGAL'S PRIVET A beautiful semi-dwarf privet with lateral branches or spreading habit. No privet is more winter hardy. It is the best privet to be left to grow without trimming. True type grown from cuttings. Low prices on this expensive and popular variety. (Prices and sizes see below.)

CHINESE ELM (The Quick Grower)—If you want a hedge in a hurry, plant Chinese Elm. Can be trimmed to any height you wish from 1 ft. to 10 ft. Makes one of the tightest hedges possible. Very hardy and drought-resistant. Leaves out early and holds leaves late. Set 12 in. apart. (Sizes and prices see below.)

BUCKTHORN (Hedge plant for far North) The hardiest of all hedges surviving the coldest winters of Canada. Fast growing with handsome foliage which lasts until late each fall. Easily trimmed and will grow into tall hedge without trimming. White flowers and blue berries all summer. (Sizes and prices see below.)

CARAGANA (Siberian Pea Shrub)—A drought lover and withstands coldest Northwest climate. Excellent as trimmed hedge or grows 8 to 10 feet when grown naturally and is filled with lovely yellow sweet pea like flowers in spring. (Sizes and prices see below.)

RUSSIAN MULBERRY (For Clipped Hedge)—This makes an ideal clipped hedge—a little darker than Privet. Grows rapidly. Can be trimmed to any height desired. Not quite as nice in habit as Privet or Chinese Elm for hedge, but still good, very economical. (Prices and sizes see below.)



Trimmed Amur River Privet Hedge



Regal's Privet Hedge, Untrimmed

PRICES HEDGING DESCRIBED ABOVE AND ON NEXT PAGE - STATE SIZE AND NUMBER

NAME	Catalog Number	1 to 1 1/2 ft. tall			2 to 3 ft. tall			1 1/2 to 2 ft. tall		
		10	25	100	10	25	100	10	25	100
California Privet	36S4H235	1.10	2.25	6.95	1.50	3.25	9.95	1.95	4.50	14.95
Amur River Privet	36S4H236	1.50	3.25	9.95	1.95	4.50	14.95	2.45	5.75	19.95
Ibolium Privet	36S4H237	1.40	2.95	8.95	1.85	4.25	13.95	2.40	5.45	18.95
Regal's Privet	36S4H238	1.20	2.50	7.95	1.70	3.75	11.95	2.95	6.75	—
Chinese Elm	36S4H700	.90	1.75	4.95	1.10	2.25	6.95	1.50	3.25	9.95
Buckthorn	36S4H239	.70	1.25	3.95	.90	1.75	4.95	1.10	2.25	5.95
Caragana	36S4H240	.90	1.75	4.95	1.10	2.25	6.95	1.50	3.25	9.95
Mulberry	36S4H386	.80	1.50	4.45	1.00	1.95	6.50	1.40	2.95	8.95
American Arbor Vitae	37S4H108	4.50	10.75	39.95	6.95	16.95	65.00	12.50	28.75	110.00
Biota	37S4H107	3.75	8.85	33.50	6.25	14.95	57.50	9.95	22.50	85.00
Pine Scotch	37S4H109	3.95	9.50	35.00	6.45	15.75	59.95	10.95	25.00	95.00
Taxus Hicksi	37S4H118		12 inch size, 10 for		\$3.75;	25 for	\$8.85;	100 for	\$33.50	
Taxus Cusp. Spreading	37S4H117		12 inch size, 10 for		\$3.75;	25 for	\$8.85;	100 for	\$33.50	
Green Barberry	37S4H202	1.19	2.50	7.95	1.70	3.75	11.95	2.95	6.75	25.00
New Red Barberry	37S4H201	1.80	3.95	12.95	2.75	6.35	22.50	5.50	13.25	49.50
Althae	37S4H203	.90	1.75	4.95	1.10	2.25	6.95	2.95	6.75	25.00
Spiraea Van Houttei	37S4H200	1.40	2.95	8.95	1.90	4.25	13.95	2.95	6.75	25.00

SPRING HILL NURSERIES... Horticulture Specialists & Consultants... Tipp City, O.

Beautify with Hardy Hedges! LIVING WALLS OF COLORED FLOWERS AND EXQUISITE FOLIAGE

AMERICAN ARBOR VITAE

(*Thuja Occidentalis*)—Popular, upright, thickly branched and beautiful dark green glossy foliage. Excellent for foundations, hedges, and grouping. Because it is easy to transplant and the fact it is easier and looks better sheared than any other evergreen it is the most popular evergreen for hedging (See picture below.) Hedging grade prices and sizes see page 36. Landscape prices and sizes see pages 39 and 40.



Spirea Van Houttei Hedge in bloom

CHINESE BIOTA (*Biota Orientalis*)—A

pyramidal or upright plant with a glossy dark green foliage. Fast growing and a good landscape plant. Can be trimmed to any desired shape. Most rapid growing hedge or screening evergreen. Grows 15 ft. tall. Excellent planted close as trimmed hedge or planted 8 ft. apart as tall screen. Hedging grade sizes and prices see page 36. Landscape and transplanting sizes and prices see pages 39 and 40.



American Arbor Vitae Hedge

SCOTCH PINE (*Pinus Sylvestris*)—

Long, dark green needles on thickly set graceful plants. Most planted, hardy, drought resistant variety for tall hedges; windbreaks. Can be trimmed but mostly grown into taller hedges. Hedging grade prices and sizes page 36. Landscape and transplanting sizes and prices see pages 39 and 40.

TAXUS HICKSI (*Columnar Yew*)—

The best dwarf evergreen for low narrow hedges. Grows in shade or sunlight. Very winter hardy, easy to grow and disease free. Unsurpassed for beauty. Hedging grade sizes and prices see page 36. Landscape and baby sizes and prices see pages 39 and 40.

TAXUS SPREADING CUSPIDATA

Like above variety, only plants have horizontal branches. Makes a beautiful trimmed or untrimmed low evergreen hedge. Hedging grade sizes and prices pages 36. Landscape and transplanting sizes and prices see pages 39 and 40.

ALTHEA HEDGING

These free flowering shrubs make wonderful hedges and once known will be planted more often. They can be kept trimmed quite low or can be allowed to grow tall as a screen. A hedge of them in bloom with all colors of flowers is a wonderful sight. Prices and sizes see page 36.

SPIREA VAN HOUTTEI (*Bridal Wreath*)

Beautiful as untrimmed hedge. (Note above picture.) This is an outstanding hedge plant. Extremely hardy, it will grow and live where other plants don't do well. Loaded with blooms in the spring—it makes a sight that's unforgettable. Good foliage all summer. Grows about 5 ft. high untrimmed, but may be trimmed if desired. Sizes and prices see page 36.



Althea Hedge in Bloom

NEW RED LEAF BARBERRY (*Berberis Thunbergi Atrapurpurea*)—

One of the finest and most colorful new shrubs. Bright red foliage all summer long with ornamental red berries all winter. Should be planted in full sunlight. Like green leaf barberry, extra hardy and tough with no government restrictions for planting. Prices and sizes see page 36.

GREEN LEAF BARBERRY (*Berberis Thunbergi*)—Considered the best and most popular of all dwarf hedge plants. Beautiful red berries throughout the winter. Very compact growth and brilliant red, autumn foliage. Excellent as clipped, formal hedge or as unclipped, informal hedge. Extra hardy and tough. Rust free. No government planting restriction on this or red leaf barberry. Prices and sizes see page 36.

PLANT PICTURESQUE *Evergreens* FOR

DWARF GLOBE SHAPE EVERGREENS

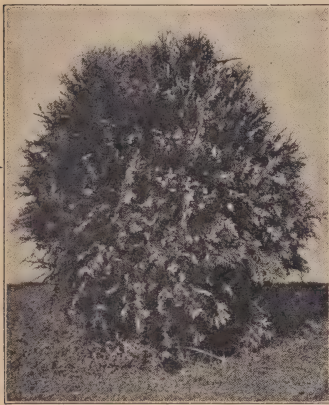
GLOBE WOODWARDI Best and most compact dark green dwarf symmetrical variety. Grows naturally in ball shape, extra good for landscaping. Prices and sizes page 39 and 40, also see below.

BOXWOOD (*Buxus Sempervirens*)—Winter hardy compact dwarf variety. No other evergreen has the charm and beauty of Boxwood. Prices and sizes see page 39 and 40.

GOLDEN BIOTA (Dwarf Golden Oriental Arbor Vitae)—Most attractive and perfect shaped of all dwarf compact evergreens. (Note picture opposite page.) Prices and sizes page 39 and 40.

MUGHO PINE (*Pinus Montana Mughus*)—Fine for formal effects. (Most reliable globe shaped plant.) Select hand trimmed plants. Prices and sizes see pages 39 and 40.

SPINY GREEK (*Juniper Excelsa Stricta*)—Attractive glaucous blue foliage, dense formal conical shaped plants do not require trimming and are not killed by dogs. Prices and sizes see pages 39 and 40.



Globe Arbor Vitae

FAMOUS WOODWARD GLOBE

Catalog No. 38S4E105
The most compact dwarf symmetrical variety. It grows naturally in ball shape. Excellent for landscaping. Guaranteed true strain grown from hand made slips (rapid growing; plant in your own garden.)

Baby transplanting size, 6 to 8 inch, 3 for 45¢; 10 for \$1.00. **\$1**



Arbor Vitae Pyramidalis

FAMOUS PYRAMID ARBOR VITAE

Catalog No. 38S4E102

Densely branched symmetrical compact variety. Grows naturally in tall spire like shape. Guaranteed true strain grown from hand made slips from parent stock (Rapid Growing).

Baby transplanting size, to grow in your own garden for economizing, 6 to 8 inches tall, 3 for 65¢. **6 FOR \$1**



"DOGZOFF"

Most Efficient Animal Repellent
One application lasts from 2 to 3 weeks. Non-poisonous or offensive. Guaranteed. Directions for using with bottle. Season's supply, 69¢.

TALL NARROW EVERGREENS

PYRAMID ARBOR VITAE Dark green all year. Densely branched, grows naturally into tall slender column. (See picture below.) Very popular as landscape variety. Prices and sizes pages 39 and 40, also see below.

IRISH JUNIPER (*Fastigata*)—One of our best tall, narrow, formal evergreens. Rapid growing but does not grow over about 6 ft. tall. (See picture opposite page.) Prices and sizes pages 39 and 40.

BLUE COLUMN JUNIPER Expensive looking formal slender columnar growth. Reliable and best of its type. Prices and sizes pages 39 and 40.

SILVER BURKI JUNIPER The favorite upright narrow silver foliage variety, dependable and beautiful. Prices and sizes pages 39 and 40.

TAXUS HICKSI (Upright Columnar Yew)—Semi-dwarf, tall, narrow habit columnar. Best evergreen for planting in shade. Most winter hardy and resistant taxus. Prices and sizes pages 39 and 40.

FINEST SPREADING EVERGREENS

PFITSERIANA JUNIPER Best, most planted, fast growing, spreading landscape evergreens for all sections and soils. Prices and sizes pages 39 and 40.

VON EHROUN JUNIPER New dark green spreading variety, fast growing, healthy, gaining popularity. Prices and sizes pages 39 and 40.

BLUE MEYERI (*Juniper Squamata Meyeri*)—New oriental beauty from China. Beautiful bright turquoise blue foliage with silver sheen. Prices and sizes pages 39 and 40. (Supply Limited.)

TAXUS SPREADING (*Cuspidata*)—Horizontal or spreading. Branches grow flat like Juniper Pfitseriana; likes shade. Prices and sizes see pages 39 and 40.

TALL BROAD EVERGREENS

SCOTCH PINE Long, dark green needles on thickly set branches, tall and fast growing compact trees. Prices and sizes pages 39 and 40.

NORWAY SPRUCE Most extensively planted, outdoor living Christmas tree. Highly recommended. Prices and sizes pages 39 and 40.

BLUE SPRUCE (*Colorado Pungens*)—Most expensive and valuable evergreen. Fine for formal conspicuous planting. Prices and sizes pages 39 and 40.

AMERICAN ARBOR VITAE

Excellent for group and foundation plantings, tall, broad type growth; fast growing. Prices and sizes pages 39 and 40.

BIOTA ORIENTALIS (*Chinese Arbor Vitae*)—Rapid growing, tall, broad evergreen, grows well in shade, should be trimmed to keep compact. Prices and sizes pages 39 and 40.

SEASON'S SUPPLY

69¢



Educational Color Pictures

The above miniature composite illustrates various full page (8"x11½") colored pictures reproduced in American Poultry Journal, together with articles on the origin and history of the breeds. Plans call for a complete series (about 100 varieties) during the fall and winter months over a period of several years which will make a beautiful, valuable breed encyclopedia of all the leading breeds. In addition, colored pictures illustrating the principal diseases affecting poultry will also appear in several issues. Use the coupon on the right and subscribe for 3 years right now. Your favorite breed may be the next to be shown.

MONEY BACK GUARANTEE If after reading 3 issues of American Poultry Journal, you think you didn't get your money's worth of poultry information, write a letter telling why you feel that way and upon receipt of that letter your subscription payment will be cheerfully refunded.

This Offer Valid Only in the United States

American Poultry Journal, 536 S. Clark St., Chicago

Enclosed find 50c for Enclosed find 25c for your
 your magazine for 3 yrs. magazine for 15 months.

New Order
 Renewal

Name _____

Address _____

Town _____

State _____

The OLDEST and BEST COSTS LESS NOW

Special Offer Reduces Price

Send this coupon with 50c and get American Poultry Journal, the Oldest and Best, for three years. That is less than the price of one egg a month, and one idea from it may mean dozens of additional eggs from your flock. For those who wish merely to get acquainted with this best source of poultry information, we offer a 15 months' trial subscription for 25c.

Better Than a Big Poultry Book

There is more valuable and timely poultry information in 10 issues than in a 300 page book because the editors have many years of experience and know what problems poultry raisers have. Any one of the articles shown at the left or the scores of others may save you from losing big money. Make sure you are right—read the American Poultry Journal.

Free Advice to Subscribers

If your problem does not happen to be discussed in American Poultry Journals you receive, write to our Service Department. You will get a prompt reply from an expert poultryman.



3 YRS.
50¢

We Recommend—

Because we feel that you will really profit from reading American Poultry Journal, we recommend that you fill out and send this coupon direct to American Poultry Journal or to: Spring Hill Nurseries Co., Tipp City, Ohio

Coupon on other side SAVES YOU MONEY!

INCREASED VALUES *and* PERMANENT BEAUTY

EVERGREEN

PRICES

LARGE SIZE SHIPPED B&B, 75c extra per plant. Junior size 40c per plant. See Important Notice below.



Golden Dwarf Biota

JUNIOR LANDSCAPE SIZE (5 to 8 yrs. old)

DWARF GLOBE VARIETIES

Name (Descriptions See Page 38)	Catalog Number	Size	Cost Each	Matched Pr. 2 for	Cost per 6
Globe Woodwardi	39S4C105	1 ft. broad	1.25	2.25	6.45
Golden Biota Dwarf	39S4C104	1 ft. tall	1.45	2.75	7.95
Boxwood	39S4C106	1 ft. tall	1.45	2.75	7.95
Mugho Pine	39S4C112	1 ft. broad	1.75	3.25	9.45
Spiny Greek Juniper	39S4C114	1 ft. tall	1.45	2.75	7.95

TALL NARROW VARIETIES

Name (Descriptions See Page 38)	Catalog Number	Size	Cost Each	Matched Pr. 2 for	Cost per 6
Pyramid Arborvitae	39S4C102	2 ft. tall	1.45	2.75	7.95
Irish Juniper Fastigata	39S4C103	2 ft. tall	1.25	2.25	6.45
Blue Column Juniper	39S4C124	2 ft. tall	2.15	3.95	11.55
Silver Burki Juniper	39S4C125	2 ft. tall	2.15	3.95	11.55
Taxus Hicksi Upright	39S4C118	1½ ft. tall	2.45	4.65	13.65

FINEST SPREADING VARIETIES

Name (Descriptions See Page 38)	Catalog Number	Size	Cost Each	Matched Pr. 2 for	Cost per 6
Pfitseriana Juniper	39S4C101	1 ft. spread	1.45	2.75	7.95
Von Ehron Juniper	39S4C111	1 ft. spread	1.25	2.25	6.45
Andora Juniper	39S4C116	1 ft. spread	1.25	2.25	6.45
Blue Meyeri Juniper	39S4C115	1 ft. tall	1.75	3.25	9.45
Taxus Spreading Cuspidata	39S4C117	1 ft. spread	2.45	4.65	13.65

TALL BROAD VARIETIES

Name (Descriptions See Page 38)	Catalog Number	Size	Cost Each	Matched Pr. 2 for	Cost per 6
Scotch Pine	39S4C109	2 ft. tall	1.25	2.25	6.45
Biota Orientalis	39S4C107	2 ft. tall	1.15	1.95	5.55
Norway Spruce	39S4C110	1½ ft. tall	1.00	1.75	4.95
Blue Spruce Colorado	39S4C100	1½ ft. tall	1.45	2.75	7.50
American Arborvitae	39S4C108	1½ ft. tall	1.15	1.95	5.55

LARGE LANDSCAPE SIZE (8 to 10 yrs. old)

DWARF GLOBE VARIETIES

Name (Descriptions See Page 38)	Catalog Number	Size	Cost Each	Matched Pr. 2 for	Cost per 6
Globe Woodwardi	39S4B105	2' broad	4.00	7.50	21.90
Golden Biota Dwarf	39S4B104	2' tall	4.25	7.95	23.40
Boxwood	39S4B106	2' tall	4.75	9.00	26.40
Mugho Pine	39S4B112	1½' broad	4.50	8.50	24.90
Spiny Greek Juniper	39S4B114	1½' tall	4.00	7.50	21.90

TALL NARROW VARIETIES

Name	Catalog Number	Size	Cost Each	Matched Pr. 2 for	Cost per 6
Pyramid Arborvitae	39S4B102	3' tall	4.50	8.50	24.90
Irish Juniper Fastigata	39S4B103	3' tall	5.00	9.50	27.90
Blue Column Juniper	39S4B124	3' tall	6.00	11.50	33.90
Silver Burki Juniper	39S4B125	3' tall	5.50	10.50	30.90
Taxus Hicksi Upright	39S4B118	2' tall	5.50	10.50	30.90

FINEST SPREADING VARIETIES

Name	Catalog Number	Size	Cost Each	Matched Pr. 2 for	Cost per 6
Pfitseriana Juniper	39S4B101	2' spread	4.50	8.50	24.90
Von Ehron Juniper	39S4B111	2' spread	4.25	7.95	23.40
Andora Juniper	39S4B116	2' spread	4.00	7.50	21.90
Blue Meyeri Juniper	39S4B115	1½' tall	4.50	8.50	24.90
Taxus Spreading Cuspidata	39S4B117	2' spread	6.00	11.50	33.90

TALL BROAD VARIETIES

Name	Catalog Number	Size	Cost Each	Matched Pr. 2 for	Cost per 6
Scotch Pine	39S4B109	3' tall	3.75	6.95	20.40
Biota Orientalis	39S4B107	3' tall	3.75	6.95	20.40
Norway Spruce	39S4B110	3' tall	4.00	7.50	21.90
Blue Spruce Colorado	39S4B100	2' tall	4.50	8.50	24.90
American Arborvitae	39S4B108	3' tall	3.75	6.95	20.40

IMPORTANT NOTICE

Evergreens will be dug with bare roots; puddled in mud and wrapped in wet moss for shipment. "B&B" means balled and burlapped which signifies plants are dug with solid ball of earth around roots and held in place by firmly wrapping with burlap. If you wish plants dug and shipped B&B add 75¢ each extra per plant for Large Landscape size and 40¢ each extra for B&B Junior Landscape size to cover added expense for digging and packing.



Irish Juniper Fastigata



1—Chinese Arbor Vitae

2—American Arbor Vitae

4—Pyramid Arbor Vitae

6—Globe Arbor Vitae

Low Priced Transplanting EVERGREENS

It's Easy, Enjoyable and Interesting To Grow Your Own

Guaranteed Best Landscape Varieties

YOU'LL BE AMAZED AT HOW FAST THEY GROW

5 Best Tall Upright Narrow Evergreens

NAME Descriptions see Page 38	Catalog Number	Size	Price Each	Price for 3	Price for 10
Pyramid Arbor Vitae.....	40S4D102	1 ft. tall	.60	1.50	4.50
Irish Juniper Fastigata.....	40S4D103	1 ft. tall	.60	1.50	4.50
Blue Columnar Juniper.....	40S4D124	1 ft. tall	.65	1.65	4.95
Silver Burki Juniper.....	40S4D125	1 ft. tall	.65	1.65	4.95
Taxus Hicksi Yew.....	40S4D118	10 in. tall	.50	1.25	3.75

5 Best Tall Upright Broad Evergreens

NAME Descriptions see Page 38	Catalog Number	Size	Price Each	Price for 3	Price for 10
Scotch Pine.....	40S4D109	1 ft. tall	.40	.90	2.50
Norway Spruce.....	40S4D110	1 ft. tall	.40	.90	2.50
Blue Spruce Colorado.....	40S4D100	10 in. tall	.50	1.25	3.75
American Arbor Vitae.....	40S4D108	10 in. tall	.35	.75	1.95
Biota Orientalis.....	40S4D107	1 1/2 ft. tall	.50	1.25	3.75

5 Best Dwarf Spreading Evergreens

NAME Descriptions see Page 38	Catalog Number	Size	Price Each	Price for 3	Price for 10
Pfitseriana Juniper.....	40S4D101	1 ft. spd.	.60	1.50	4.50
Von Ehron Juniper.....	40S4D111	1 ft. spd.	.50	1.25	3.75
Blue Meyer Juniper.....	40S4D115	10 in. tall	.70	1.80	
Andora Juniper.....	40S4D116	10 in. spd.	.40	.90	2.50
Taxus Spreading Cuspidata.....	40S4D117	10 in. spd.	.50	1.25	3.75

5 Best Dwarf Globe Shaped Evergreens

NAME Descriptions see Page 38	Catalog Number	Size	Price Each	Price for 3	Price for 10
Globe Woodwardi.....	40S4D105	10 in. spd.	.40	.90	2.50
Golden Biota Dwarf.....	40S4D104	1 ft. tall	.60	1.50	4.50
Boxwood.....	40S4D106	8 in. tall	.40	.90	2.50
Mugho Pine.....	40S4D112	8 in. spd.	.50	1.25	3.75
Spiny Greek Juniper.....	40S4D114	10 in. tall	.50	1.25	3.75



Economy Size BLUE SPRUCE

Good Blue Spruce are the most expensive and beautiful of all evergreens.

Here's a real bargain. Catalog number 40S4E100, baby size, 3 yr. old, 3 to 6 in. tall, 10 for \$1.00; 100, \$7.75

10 FOR \$1.00

COLORADO BLUE SPRUCE SPECIAL

Good Blue Spruce commands the highest prices and are the most beautiful of all evergreens.

SPRING HILL guarantees reselcted choice Blue Spruce, Catalog No. 40S4D-100, 8 year old branched plants, 1 foot tall, \$1.25 ea.; 3 for \$3.45; 10 for \$10.95.

\$1.25

SPRING HILL NURSERIES... Horticulture Specialists & Consultants... Tipp City, O.

Ready to Go!



DRIVE TO OUR NURSERY FOR SUBSTANTIAL SAVINGS IN LARGE LANDSCAPE SIZE EVERGREENS. THOUSANDS READY TO GO.

Popular Entrance Group

- 2 Pyramidalis Arbor Vitae, Matched Pair, 3 ft. tall..... \$8.50
- 2 Globe Arbor Vitae, 2 ft., Matched Pair, Round..... \$7.50

HEAVY LANDSCAPE SIZE

\$16.00 ALL **\$12⁷⁵**
Value FOR

Save Over 25%



BROAD-LEAF EVERGREENS

The following hardy shrubs have persistent foliage or are evergreen all winter. These evergreen shrubs are in great demand and specified by eminent landscape architects in all expensive plantings. All can be grown in limestone or acid soils.

ABELIA GRANDIFLORA (Everblooming and Evergreen. 2 yr., 1 ft. size, catalog number 41S4B204, 40¢ each; 3 for 95¢; 12 for \$3.50. Heavy, 4 yr., 3 ft. size, catalog number 41S4A204, 90¢ each; 3 for \$2.55; 6 for \$4.95. For description and picture see page 32.

EVERGREEN FIRETHORN (Pyracantha)—Famous for its scarlet fruits and attractive foliage. Grows 4 ft. tall. Catalog number 41S4C140, 3 yr. pot plants, 9 to 12 inches, 55¢ each; 3 for \$1.45; 10 for \$4.75. Catalog number 41S4B140, 12 to 15 inches, 5 yr., \$1.35 each.

EVERGREEN BITTERSWEET (Euyonomus Patens)—Grows 2 to 3 ft. tall. Very popular dwarf bushy evergreen shrub. Catalog number 41S4C141, 9 to 12 inch, 50¢ each; 3 for \$1.35; 10 for \$4.25. Catalog number 41S4A141, 18 to 24 inches, 6 yr., \$1.25 each.

AMERICAN HOLLY (Ilex Opaca)—Have your own Christmas decorations. Plant 3 or more for cross pollination. Catalog number 41S4B142, 1 to 1½ ft., 7 yr. old, 75¢ each; 3 for \$2.10; 10 for \$6.75. Catalog number 41S4C142, 5 yr., 9 to 12 inch, 40¢ each; 3 for \$1.10; 10 for \$3.25.

MAHONIA Excellent for semi-shade, grows 4 ft. tall. Catalog number 41S4C-143, 8 to 12 inches, 5 year old, 50¢ each; 3 for \$1.35; 10 for \$4.25. Catalog number 41S4A142, 12 to 18 inch, 8 yrs. old, B&B, \$2.50 each.



Holly Leaf Mahonia

SPRING HILL NURSERIES... Horticulture Specialists & Consultants... Tipp City, O.

NEW CHRYSANTHEMUMS for the GARDEN of TODAY

Expertly chosen. Spring Hill ships only 1st class, large 2½ inch pot grown plants, propagated by hand cut slips. From Blooming Plants. Guaranteed to bloom this fall.



Mrs. P. S. DuPont

NEW RED VELVET Glorious new crimson with shapely fully double flowers. Clean and neat, erect growing, extremely hardy plant. "Surprisingly fine." Catalog number 42S4A531, 50¢ each.

ALLADIN Extra early large double, fiery copper blooms. A dependable early, hardy mum with long erect stems. Excellent for cutting. Catalog number 42S4A520, 3 for 80¢; 10 for \$2.35.

BARBARA CUMMING In full flower in early September. Extra large, old-gold buds open into bright chrome yellow. Hardy, dependable variety. Catalog number 42S4A521, 30¢ each; 3 for 80¢.

BURGUNDY New sweet scented hardy Korean. Large clusters of bright crimson, double, well formed flowers in September. Popular variety. Catalog number 42S4A522, 30¢ each; 3 for 80¢; 10 for \$2.35.

CAPT. JOHN SMITH Extra large well shaped pink flowers in great profusion. Hardy plants are compact, of medium height and blooms early in October. A colorful variety in the garden or vase. Catalog number 42S4A523, 30¢ each; 3 for 80¢.

DEAN KAY Begins to flower in July. Hundreds of large double glorious rose-pink flowers. Excellent for cutting and landscaping. Grows like cushion mums but a little taller with longer flower stems. New low prices. Catalog number 42S4A524, 40¢ each; 3 for \$1.00.

DEAN LADD Early or summer flowering. Like Dean Kay—extra winter hardy, vigorous growing with hundreds of flowers the first year. Perfectly formed blazing bronze, double flowers on nice stems for cutting. Very popular with visitors at our nursery. Catalog number 42S4A525, 45¢ each; 3 for \$1.15.

EARLY WONDER (Plant patent applied for)—Arm-loads of perfectly shaped flowers like those grown and sold by florists from greenhouses. New, delicate apricot or peach-pink flowers. Truly an early double, we know of no other hardy chrysanthemum of such lovely color with large perfectly formed flowers. New reduced prices. Catalog number 42S4A526, 50¢ each; 3 for \$1.25.

GERONIMO Extra early, large fluffy bronze-golden flowers on well filled, compact plants. A most dependable early cutting and garden variety. Catalog number 42S4A528, 35¢ each; 3 for 85¢.

KING MIDAS Gaining in popularity. Perfect large double, deep golden blossoms fill the plant in surprising profusion from early September without let-up till winter. Catalog number 42S4A529, 40¢ each; 3 for \$1.00.

LAVENDER LADY The first superb, hardy double lavender chrysanthemum. The silvery lavender flowers are two inches across, superbly formed—with no trace of pink or magenta. Extra free flowering, hardy. One of the best of all new hardy varieties. Catalog number 42S4A530, 35¢ each; 3 for 90¢.

SYMPHONY Extra large three inch double and nicely formed flowers of mauve-rose with coral and gold shading, free flowering, tall growing. Unsurpassed as a cut flower variety. You must see it to appreciate its size, its magnificent blend of colors. Catalog number 42S4A537, 35¢ each; 3 for 90¢.

MRS. PIERRE S. DU PONT III This outstanding new mum is here to stay. Beautiful peach-pink tinted with rosy-salmon and fawn. A color you have to see to appreciate its thrilling beauty. Early flowering. The most perfect large double hardy fool proof variety. Highly recommended. Reduced prices. Catalog number 45S4A532, 35¢ each; 3 for 95¢.

WINNETKA New large double pure white flowers of perfect form. Free flowering and hardy. The vigorous hardy chrysanthemum is the best early large pure white variety we grow. A wonderful seller when in bloom. Catalog number 45S4A536, 35¢ each; 3 for 90¢.



Symphony



Capt. John Smith

FAMOUS CUSHION MUMS
See Color Picture and Price Pages 1 and 2.

NEW CHRYSANTHEMUMS for the GARDEN of TODAY



Algonquin

ALGONQUIN

New U. S. D. A. introduction. Lovely clear yellow double flowers 3 inches across. Semi-dwarf compact plants. Blooms in September ahead of frost. Are extra hardy, healthy, dependable and abundance of blooms. Excellent for cutting. Catalog number 43S4A538, 35¢ each; 3 for 90¢.

CYDONIA

One of the brightest new double chrysanthemums. Large double flowers of glowing orange. A brilliant and unusual color. Vigorous plants with long stems excellent for cutting. It begins blooming in September. Catalog number 43S4A539, 40¢ ea.; 3 for \$1.00.

Other Chrysanthemums
see pages 1 and 42

SPECIAL

1 Algonquin\$.35
1 Capt. John Smith30
1 Lavender Lady35
1 Burgundy30
1 Mrs. P. S. DuPont35
1 Winnetka35

Value.....\$2.00

OFFER No. 43S4

All Six for

\$1.65

Save Over 20%

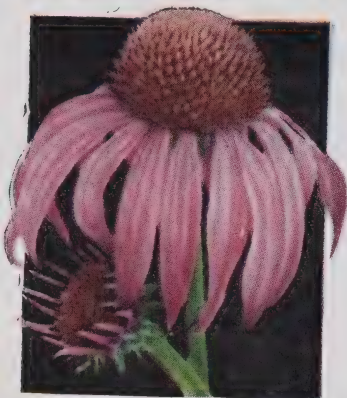




Columbine (Aquilegia Mrs. Elliott)



Rosy Spires (Physostegia)



Cone Flower (Rudbeckia Purpurea)

BEAUTY from FLOWERS

CHARM AND CHEER FOR YOUR GARDEN AND TABLE THIS SUMMER



NEW EVERBLOOMING CLIVENDEN BEAUTY DELPHINIUM

Reselected florist strain finest obtainable at any price. Taller with much larger, more graceful and useful flower spikes of brighter color. Most vigorous, hardy, healthy and permanent variety with many more flower spikes than English hybrid varieties. 2 yr., catalog number 44S4A436, 35¢ each; 3 for 79¢; 10 for \$2.25.

BLEEDING HEART

Old Fashion Bleeding Heart

Dicentra Spectabilis—Truly romantic heart shaped flowers of great beauty and gracefulness. Lovely in mixed bouquets. Tall growing with largest flowers. Grows best in semi-shade. Catalog number 44S4A409, 2 yr., 3 to 5 eye, whole root clumps, hand graded, 50¢ each; 2 for 89¢; 6 for \$2.45.

Everblooming Plumy Bleeding Heart

Dicentra Exima—Lovely fine cut foliage on dwarf plants contrast beautifully with blooms all summer. Catalog number 44S4A408, 35¢ each; 3 for 85¢; 6 for \$1.55.



Delphinium Steals the Show

SPRINGHILL'S SUPERB HYBRID DELPHINIUMS

Mr. W. F. Bohlender, former owner and manager of Springhill Nurseries, now deceased, visited Europe and selected the Superb Hybrid Delphiniums in the opposite picture. Here we have the newest and finest of any Delphiniums to be offered anywhere. The colors range from the palest shade of blue to royal purple and contain many pastel tones of mauve and pink blendings. This strain contains both single and double flowered forms. It is not unusual for them to bloom 3 or more times in a single season. Plant these in bold groups in your hardy border. Catalog number 45S4A32, 2 yr. blooming clumps, 35¢ each; 3 for 90¢; 6 for \$1.45; 12 for \$2.65.



Springhill's Superb Hybrid Delphinium



Photo of Mr. W. F. Bohlender and Spring Hill's superb hybrid Delphinium.

INDEX SEE
PAGE 3

NEW DELPHINIUM LA MARTINE

A new and different color. Spikes of rich deep indigo blue flowers with white eye. A sturdy, healthy and vigorous growing variety. People who have difficulty growing Delphinium should succeed with La Martine. The giant size spikes grow 2 ft. long on 5 ft. stems in great profusion throughout the summer. Catalog number 45S4A-433, 2 yr. blooming clumps, 25¢ each; 3 for 60¢; 12 for \$2.15.

BLACKMORE AND LANGDON HYBRID DELPHINIUM

This English strain produces solid erect spikes of great height and rigidity. The colors are of delicate shades of blue, mauve, and pink. Catalog number 45S4A434, 25¢ each; 3 for 60¢; 6 for \$1.19; 12 for \$2.00.

QUEEN OF THE BLUES DEL- PHINIUM

Everblooming, most profuse blooming of all perennial delphiniums. Single, delft-blue flowers, growing 12 to 15 inches in height; the foliage being more finely cut, almost fern-like. Are lovely planted in groups of 6 or more about 12 inches apart in a hardy border. Catalog number 45S4A435, 3 for 45¢; 10 for \$1.25.

SUMMER FLOWERING CHRYS- ANTHEMUM MYLADY

—Hardy early flowering with wonderful delicate apricot buds that open into perfectly formed fully double warm yellow. Early and dependable, excellent in combination with Delphinium. Catalog number 45S4A-483, 45¢ each; 3 for \$1.15.

CHOICE COLUMBINE

Color Picture Opposite Page.

(Aquilegia Imperial Hybrids)—New long-spurred columbines of amazing colors and beauty. Extra tall free flowering strain unsurpassed for color, size and abundance of flowers. 2 yr.,

Catalog number 45S4A420

3 for 65¢

27c each; 10 for \$1.95

GIANT CONE

Color Picture Opposite Page.

(Flower Rudbeckia Purpurea)—Tall stately lavender or magenta flowers with glistening centers or cones. Blooms throughout summer, excellent for cutting. 2 yr. heavy blooming size,

Catalog number 45S4A414

3 for 60¢

12 for \$2.15; 25c each

ROSY SPIRES

Color Picture Opposite Page.

(New Hardy Physostegia)—New glowing rosy spires of large size and unusual beauty. Latest and most beautiful free flowering Physostegia. Blooms from early September till winter, hardy and easy to grow.

Catalog number 45S4A400

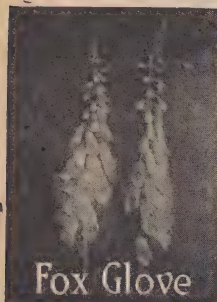
3 for 60¢

12 for \$2.15; 25c each

SPRING HILL NURSERIES... Horticulture Specialists & Consultants... Tipp City, O.

Hardy Perennial Flowers

GUARANTEED TO PLEASE
...PLANT FOR BEAUTY



Fox Glove

Hardy Fox Glove



Rosy Loosestrife



Shasta Daisy Alaska



Canterbury Bells



Yellow Day Lily

Yellow Day Lily

HARDY FOX GLOVE Big bell-shaped flowers on tall stately stems throughout the summer. Finest hybrids in beautiful colors from pink, blue, violet to white. **Catalog number** 46S4A412, 3 for 50¢; 6 for 90¢.

ROSY LOOSE STRIFE (Lythrum)—(Morden's Pink)—Unsurpassed for bouquets and summer gardens. Lovely rosy mauve flower spikes in profusion. Very hardy and easy to grow. **Catalog number** 46S4A423, 2 yr., 3 for 50¢; 6 for 90¢.

SHASTA DAISY ALASKA Largest and most satisfactory robust free flowering variety. Enormous pure white with golden centers. Summer flowering, excellent for bouquets. **Catalog number** 46S4A415, 3 for 50¢; 6 for 90¢.

CANTERBURY BELLS (Campanula)—Unsurpassed for grace and beauty. Lovely pink, white, blue cup and saucer like flowers make beautiful lasting cut flowers. **Catalog number** 46S4A407, 3 for 50¢; 6 for 90¢.

YELLOW DAY LILY (Dr. Regal)—Improved hybrid cut flower variety large rich handsome buttercup yellow lilies in profusion in May and June. Hardy, easy to grow. **Catalog number** 46S4A468, 25¢ each; 3 for 50¢.

HARDY ORCHIDS FOR YOU

All can enjoy Spring Hill's low price—NEW SHILKA IRIS—Discovered by Prof. Hansen in the wilds of Siberia. Identical to some expensive orchids.

Spring Hill's Shilka Iris hybrids have as many as 12 to 15 flowers on a plant and bloom for six weeks or more. Many are double with beautiful harmonizing flowers. Sure to please. **Blooming size, catalog number** 46S4A464, 30¢ each; 4 for \$1.00.

4
FOR
\$1.00



Flame Carnation

FLAME CARNATION CRIMSON KING—A new hardy double Carnation equalling those grown in greenhouses, yet withstands zero temperatures. Large, double striking crimson-red flowers from July till frost. Strong pot plants that will bloom all this summer. Our experience is Carnation Crimson King will not bloom satisfactorily unless planted in rich soil and kept well fed. Very scarce this year. **Catalog number** 46S4A411, 50¢ each; 3 for \$1.35.



Hardy Outdoor Ferns

DECORATIVE HARDY OUTDOOR FERNS

These large decorative hardy plants produce those marvelous natural effects bringing the cool tang of the woodland to your garden. No plants easier to grow. They succeed best in moist shady locations. Set 10 to 12 inches apart, divide and replant if they grow thick. Choice of two best varieties.

OSTRICH FERN Fairly tall plummy species. Graceful as a palm. Best for moist, shady places. **Catalog number** 46S4A421, 2 and 3 yr. clumps, 25¢ each; 3 for 60¢; 6 for \$1.10; 12 for \$1.95.

ROYAL FERN Medium size, compact growing, with handsome glossy foliage. **Catalog number** 46S4A422, 2 and 3 yr. clumps, 25¢ each; 3 for 60¢; 6 for \$1.10; 12 for \$1.95.

Buy With Confidence



BOQUETS ALL SUMMER

RED HOT POKER TRITOMA—(Specially priced)— Sometimes called torch flower because of its bright red or flame colored flowers on tall 2 to 3 foot stems. The plants are hardy and have five to a dozen flower stalks the first year. 2 year plants, catalog number 47S4A425, 25¢ each; 3 for 60¢; 10 for \$1.75.



Tritoma (Red Hot Poker)

WINTER HARDY BEGONIA

(*Begonia Evansiana*)—Blooms profusely all summer. Grows best in semi-shade. North of Philadelphia it should be protected by winter mulching.

Enjoy lovely pink begonias from spring to fall every year without replanting. Blooming size tubers, catalog number 47S4A469, 25¢ each; 3 for 60¢; 10 for \$1.75.

VERONICA (*Veronica Elegans*)—The rare and beautiful pink speedwell. Extremely winter hardy and long lived. Catalog number 47S-4A424, 25¢ each; 3 for 50¢; 6 for 90¢.

Everblooming ROYAL BLUE PLUMBAGO

(*Larpetae*)—Lovely low growing hardy perennial constantly filled with an abundance of bright peacock blue flowers. Attractive compact plants with handsome foliage.



Plumbago



A colorful and attractive plant for all gardens. (Special Prices.) Catalog number 47S4-A429, strong blooming size plants, 25¢ each; 3 for 60¢; 12 for \$1.95.

CHINESE BALLOON FLOWER (*Platycodon*)—A valuable garden flower with balloon-shaped, deep opalescent blue, wax-like flowers opening into perfect stars. Blooms from July till frost. A plant all should enjoy at Spring Hill's low price. Heavy 2 yr. plants, blooming age, catalog number 47S4A467, 3 for 39¢; 10 for \$1.15.



Hardy Blue Fringed Daisy

NEW ARISTOCRATIC IRIS KAEMPFERI

The last to bloom and best of all Iris species in size, color, and beauty. Spring Hill offers the best new giant doubles in superb art shades, some of which are as large as an ordinary dinner plate. Assorted colors. New low prices. Strong 2 yr. blooming size, catalog number 47S4A463, 25¢ each; 5 for \$1.00.

HARDY BLUE FRINGED DAISY Beautiful azure blue daisies in clusters on 18 inch stems during July and August when flowers are scarce. Excellent for cutting and garden display. Note opposite Picture. This wonderful daisy is highly recommended. 2 yr., catalog number 47S4A419, 25¢ each; 3 for 65¢.

DOUBLE SHASTA DAISY (*White Swan*)—Everblooming. A wonderful new cut flower and garden variety. Filled with blooms for decoration day and throughout the season. Catalog number 47S4A416, 30¢ each; 3 for 75¢.

CARNATION (*Chabaud's Giant Double Improved*)—Will bloom all summer long for you 16 to 18 inches high, robust and profuse flowering. Crimson, scarlet, pink, white and salmon hybrids. Blooming size, catalog number 47S4A410, 3 for 42¢; 100 for \$9.95.

PINK CORAL BELLS (*Heuchera Sanguinea Splendens*)—Fine 18 inch spikes of charming coral to crimson bells. This valuable hardy plant is usually expensive but our stock is large and we are pricing them very moderately. Catalog number 47S4A448, 3 for 60¢; 6 for \$1.00.

BABY'S BREATH (*Gypsophila Paniculata*)—Tall growing with masses of misty white blooms. Excellent for cutting. Catalog number 47S4A444, 3 for 45¢; 10 for \$1.35.

GYPSOPHILA BRISTOL FAIRY (*Double Baby's Breath*)—A wonderful new introduction and a great improvement. Bristol Fairy produces more beautiful misty flower spires in which the individual blossom is larger and of much purer white. It also flowers almost continuously throughout the summer. Grafted plants, 2 yr., catalog number 47S4A445, 40¢ each; 2 for 75¢; 6 for \$1.95.

NEW BABY'S BREATH (*Gypsophila Oldhamiana*)—Continuous blooming from August until killing frosts. This excellent new variety from Manchuria is very hardy, free blooming, and dainty. The tiny blossoms of delicate flesh pink are borne in great profusion and carried close in airy terminal panicles. The best misty mixer for bouquets. Strong 2 yr. plants will bloom abundantly for you all fall. Catalog number 47S4A446, 30¢ each; 4 for \$1.00.



New Baby's Breath

Hardy Perennial Flowers

**GUARANTEED TO PLEASE
...PLANT FOR BEAUTY**



Hardy Hibiscus

HARDY HIBISCUS—White, pink, red, and combination colors. Largest flowering perennial.



Chamomile

CHAMOMILE—Anthemis or Hardy Marguerite—Bright yellow flowers all season. Fine for cut flowers.



China Pink

CHINA PINK—The fragrant, old-fashioned, pink, garden Carnation, that blooms all summer.



Gaillardia

GAILLARDIA — The Dazzler—A new variety—larger, copper and orange flowers.

Hardy Perennial Flowers

Grow each year without planting.

Will have to return money at these low prices when our stock is sold. Order Early. 1 year field grown, blooming size. Guaranteed to bloom this summer. Seedlings are smaller but grown in large clumps. 1st year.

Catalog number 48S4B475

SPECIAL SAVINGS
Your Choice of Any Variety Listed
On This Page

6 of a kind for 59c; 12 of a kind for 95c; 25 of a kind \$1.75



Forget-me-not

FORGET-ME-NOT—(Anchusa) — Vivid sky blue flowers. Blooms early in the spring. Pretty foliage.



Shasta Daisy

SHASTA DAISY—Largest of the white flowering daisies. Fine for cutting.



CARNATION—Double Chinese—All the new colors, glowing scarlets, cerise pink, salmon, and white. Outstanding beauties.



BLUE FLOWERING FLAX—(Linum Perenne)—Profusion of dainty azure-blue flowers each spring with scattering blooms all summer.



COREOPSIS MAYFIELD GIANT—New giant bright golden daisies. Improved color, size, profusion of bloom.



DELPHINIUM—Giant flowering dark and light blue hybrids. An imported strain of great beauty. Guaranteed to bloom this summer.



PERSIAN DAISY — Beautiful bright red and glowing pink flowers to brighten up your garden. Easy to grow.



Sweet William

SWEET WILLIAM—An old favorite. Finest varieties, selected strain. Three colors.



HOLLYHOCKS — One of the most magnificent hardy perennials. Mixed strain of pastel shades.



Liatris

LIATRIS — Plazing Star—Charming, rose-purple flower spikes. Excellent for bouquets.



COLUMBINE MRS. SCOTT ELLIOTT — Superb large flower hybrids in all colors of the rainbow.



ROYAL PINKS—Most colorful fringed flower from delicate pink to richest velvety crimson imaginable.

★ **PATHFINDER**

The Weekly News Magazine
For The Whole Family. Now
In Its 50th Year of Continu-
ous Publication From
Washington, The Nation's
Capital

★ **HONEST** ★ **IMPARTIAL** ★ **ACCURATE**

You get every week the latest in
national and international devel-
opments. Keeps you up-to-date on
the war. Our editors not only
report the news, in brief, simple
phrases, but give the background,
story and significance of the more
important events. Nothing flashy,
nothing wild, no smart-aleck writ-
ing, no axes to grind. Every one
in your family will want to be the
first to read Pathfinder every
week. Folks like it. You will too.

52 WEEKS
now only
\$1.00

OTHER WEEKLY FEATURES YOU'LL LIKE

Under the Dome— Short, interesting, late items on what is happening in Washington that you want to know about. Right now Washington is the World's news center and the editors give you the news and facts behind the news. Always an important page to you.

Personalities— Lots of one- and two-paragraph human interest items with photographs to give a picture of modern America. News about people— some big people, some movie stars— but in the main, about average people, the ones who make America tick as a democracy.

For Women Folks— Something special every week of interest to women and girls— fashions, patterns, fancy work, home decorations, and usable practical household helps. The young folks also will get a lot of fun from brain teasers, puzzles, cartoons, and jokes.

WEEKLY PATHFINDER — BIGGEST \$1.00 VALUE.

MAIL TODAY!

**Mail Coupon with \$1.00 (at our risk) for 52 weekly issues, to
PATHFINDER, Dept. C., Pathfinder Building, Washington 18, D. C.**

Recommended by

SPRING HILL NURSERY

If you are now a Subscriber, give this Valuable Coupon to a Friend who is not.

READ PATHFINDER

Get the inside facts from Washington

NOW more than ever before you want to know what is happening, not only at the Nation's Capital, but all over the world. At this new low price of only \$1.00 a year, you can get all the important news, accurate, complete every week in PATHFINDER, America's Oldest News Weekly. Bigger issues, better paper, and all greatly improved. No liquor or objectional advertising.

52
WEEKLY ISSUES
Only \$1.00

PATHFINDER, Dept. C., Pathfinder Bldg., Washington 18, D. C.
I'm enclosing \$1.00 for Pathfinder one year, 52 WEEKLY ISSUES.

Name _____

R. F. D. _____ Box _____ or Street _____

P. O. _____ State _____

IMPORTANT: Mail direct to PATHFINDER with \$1.00 (at our risk). Offer good only in U. S.

See
Other Side



HARDY Ornamental VINES

PURPLE WISTARIA Very fast growing. Blooms quite young. Magnificent with its drooping clusters of beautiful lavender sweet pea shaped flowers in clusters often a foot long. Grafted from blooming plants, guaranteed to bloom. Vines 3 yr., 2 to 3 ft., Catalog number 49S4A800, 75¢ each; 3 for \$1.95. 1¢ sale see page 21 for 2 yr. size, 2 for 56¢.

BITTERSWEET (*Celestrus Scandens*)—Valuable for its berries which are used for interior decoration throughout the winter. Used to cover unsightly fences or stone walls. Catalog number 49S4A801, 4 yr. bearing age, 45¢ each; 3 for \$1.15. 2 yr., 2 ft. (see 1¢ sale page 21, 2 for 46¢.)

EVERBLOOMING NEW SCARLET TRUMPET VINE (*Heckrotti*)—Extremely colorful with a pleasing brilliant fragrance continuously throughout the summer. An abundance of flashing long scarlet trumpet shaped flowers in clusters. Outstanding new vine. Highly recommended. Catalog number 49S4A802, 3 yr. blooming age, 45¢ each.

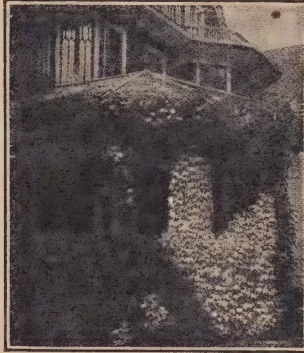
EVERGREEN VINE BITTERSWEET (*Euonymus Colorata*)—Hardy fast growing evergreen vine. Foliage stays green all winter on the plants. Fine for covering walls or unsightly places. Used extensively in evergreen plantings to cover bare ground. Catalog number 49S4B804, 3 yr., 2 ft., 40¢ each; 2 for 75¢.



Silver Lace Vine

PORCELAIN IVY New from the Orient. Handsome cutleaf foliage and large brilliant porcelain blue fruits in clusters. Very showy. Catalog number 49S4B803, 2 yr., 60¢ each; 3 for \$1.65.

NEW SILVER LACE VINE (*Polygonum Auberti*) Something new in the way of vines. Makes a growth of 25 feet or more in one season. Covered with sprays of silvery-white flowers in the spring and again in autumn. Catalog number 49S4A805, 2 yr., No. 1 blooming size, 55¢ each; 2 for \$1.00.



Boston Ivy



Scarlet Trumpet Vine

NEW HARDY ENGLISH IVY

Superior winter hardy sun resistant outdoor variety. Selected from hundreds of varieties by Mr. R. R. Runyan. Catalog number 49S4A806, 30¢ each; 4 for \$1.00.

FRAGRANT HONEYSUCKLE VINE

An evergreen vine fast growing, disease free and hardy. Fragrant creamy white flowers. Our most popular ground cover for erosion control. Write for 1,000 lot prices. Catalog number 49S4A807, 35¢ each; 3 for 95¢.

BOSTON IVY (*Ampelopsis Veitchi*)—Used extensively on brick or stone houses. Grows very rapidly. Glossy green leaves which stay on almost all winter and turn to a brilliant orange-scarlet in the fall. Clings to any stone, brick or concrete wall. Catalog number 49S4A808, 3 yr. DeLuxe grade, 40¢ each; 3 for \$1.00. Catalog number 49S4B808, 2 yr. medium, 30¢ each; 4 for \$1.00.

CLIMBING HARDY SWEET PEAS, 3 for 30¢. See index page 3.

CLEMATIS PANICULATA The most planted vine; fast growing and beautiful. Lovely, small white flowers completely cover the vine followed by ornamental woolly seeds. Catalog number 49S4A809, heavy 3 yr. blooming size, 40¢ each; 3 for \$1.00.

LARGE FLOWERING CLEMATIS

Will bloom for you this summer.

JACKMANII—Violet-purple flowers.

MME. ED ANDRE—Large redflowers. Catalog Number 49S4B809 2 for \$1.35

LARGE FLOWERING CLEMATIS 2 yr.

75c ea.

Flowering Age



White Clematis

SPRING HILL NURSERIES... Horticulture Specialists & Consultants... Tipp City, O.

Economy **SHADE TREES** BEST Varieties

1-CENT Sale

New Low Prices

1-CENT Sale

OUTCLASSING ALL COMPETITION IN SMALL STRAIGHT HEALTHY TREES. BEST VARIETIES.



Sugar Maple

- SILVER MAPLE** (Acer Dasycarpum) Cat. No. 50S4C702 2 FOR **41¢**
4 ft., 2 yr. 40¢, each SALE PRICE
- AM. WHITE ASH** *3 yr., Cat. No. 50S4C712 2 FOR **41¢**
3-4 ft., 40¢ each SALE PRICE
- WEeping WILLOW** (Salix) Cat. No. 50S4C710 2 FOR **56¢**
3-4 ft., 55¢ ea. SALE PRICE
- LOMBARDY POPLAR** 2 yr., Cat. No. 50S4C711 2 FOR **36¢**
3-4 ft., 35¢, SALE PRICE
- THORNLESS HONEYLOCUST** No. 50S4C709 2 FOR **51¢**
SALE PRICE
- BLACK LOCUST** No. 50S4C724 2 FOR **41¢**
SALE PRICE

- MT. ASH** (Europ.) Cat. No. 50S4C713 2 FOR **61¢**
3-4 ft., 60¢, SALE PRICE
- WHITE BIRCH** Cat. No. 50S4C714 2 FOR **51¢**
50¢, SALE PRICE
- CHINESE ELM** Cat. No. 50S4C700 2 FOR **41¢**
40¢, SALE PRICE
- ENGLISH OAK** Cat. No. 50S4C715 2 FOR **41¢**
40¢, SALE PRICE
- SUGAR MAPLE** Cat. No. 40S4C703 2 FOR **56¢**
55¢, SALE PRICE

HACKBERRY
No. 50S4C726
SALE PRICE 2 FOR **46¢**

1-CENT Sale

SILVER MAPLE Most rapid growing maple, beautiful autumn foliage. Recommended for quick shade. 6 to 8 ft., catalog number 50S4B702, \$1.65 each; 2 for \$3.15. 10 to 12 ft., catalog number 50S4A702, \$3.25 each; 2 for \$6.25.

SUGAR OR HARD MAPLE The most colorful in autumn of all maples. Hardy and rapid growing. Highly recommended. 6 to 8 ft., catalog number 50S4B703, \$2.50 each; 2 for \$4.50. 8 to 10 ft., catalog number 50S4A703, \$3.75 each; 2 for \$7.25.

NORWAY MAPLE Compact round headed handsome trees. Extra large glossy foliage; slow growing. 6 to 8 ft. whips, catalog number 50S4B704, \$1.95 each; 2 for \$3.65. 10 to 12 ft., branched, catalog number 50S4A704, \$4.25 each; 2 for \$8.25.

WEeping WILLOW New hardy variety grows anywhere. Extra fast growing with long graceful arching branches. Heavy 8 to 10 ft. trees, catalog number 50S4A710, \$3.50 each; 2 for \$6.75. 5 to 7 ft. size, catalog number 50S4B710, \$1.60 each; 2 for \$2.95.

TULIP TREE Liriodendron—(Tulipifera)—Tall handsome, hardy, ornamental, pyramidal habit, rapid growth and not subject to insect and plant diseases. Has clean foliage, light bluish green with giant fragrant yellow and orange flowers, often 5 to 6 inches across in June. Heavy 6 ft. trees, catalog number 50S4B716, \$1.75 each; 2 for \$3.25. Large 8 to 10 ft. size, catalog number 50S4A716, \$2.95 each; 2 for \$5.65.

Free Planting Instructions with Order of \$1.00 or More.



Chinese Elm

CHINESE ELM SPECIAL
HEAVY BRANCHED TREES
5 TO 7 FT. TALL
79¢ EA
2 for \$1.50

FAST GROWING CHINESE ELMS FINEST STRAIN
CHINESE ELM True hardy fast growing desirable strain. A big beautiful shade tree in 5 years. Special 5 to 7 ft. size, catalog number 50S4B700, 79¢ each; 2 for \$1.50. 8 to 10 ft., heavy branched tops, catalog number 50S4A700, \$2.50 each; 2 for \$4.50.

GUARANTEED PLANTS Buy With Confidence

OUTSTANDING FLOWERING TREES

SCARLET FRUITED HAWTHORN One of the most beautiful of the Hawthorns. with double white flowers. Beautiful in foliage and scarlet fruit in autumn. 2 ft. size, catalog number 51S4B717, 45¢ each; 3 for \$1.10. 4 ft. size, catalog number 51S4A717, \$1.15 each; 3 for \$3.15.

BLOOD RED ORIENTAL MAPLE (*Acer Palmatum Atropurpureum*)—New deepest red variety imported from Holland. Popular low growing tree or tall shrub. Has star shaped leaves of a blood red color. If planted in a sunny location the leaves retain their bright red foliage all summer and fall. It is a plant that everyone admires and attracts a lot of attention in any planting. Grafts, 1 ft. size, catalog number 51S4B705, 90¢ each; 3 for \$2.55. Heavy 4 yr., 2 to 2½ ft. size, catalog number 51S4A705, \$4.75 each.

CRIMSON FLOWERING CRAB Extra large deep rose red flowers in greatest profusion. Attractive red foliage and ornamental fruit that is often used for jellies. 3 ft., 2 yr., catalog number 51S4B740, \$1.00 each; 3 for \$2.75. 5 to 7 ft. blooming age, catalog number 51S4A740, \$2.15 each; 3 for \$6.00.

DOUBLE ROSE BUD FL. CRAB (Bechtol's)—The most beautiful of the flowering crabs. The attractive dwarf trees are filled with thousands of large, double pink flowers resembling roses. Awe-inspiring in its magnificent beauty each spring. Heavy blooming age, 3 ft., catalog number 51S4B741, \$1.25 each; 3 for \$3.45. 4 ft. size, catalog number 51S4A741, \$1.95 each; 3 for \$5.55.

YOSHINO FLOWERING CHERRY (*Prunus Yodensis*) Yoshino is the most free flowering of all. Lovely pink flowers entirely fill the plant. Yoshino is the famous variety planted around the tidal basin in Washington, D. C. Immensely popular, easy to grow. Large 6 to 7 ft. blooming age plants, catalog number 51S4A742, \$2.45 each; 3 for \$6.95. 4 ft. size, 3 yr., catalog number 51S4B742, \$1.25 each; 3 for \$3.45.

WEeping FLOWERING CHERRY (*Prunus Subhirtella Itozakura Pendula*)—Most beautiful semi-dwarf trees with thread-like branches which are wreathed with matchless cameo-pink flowers in early spring. Loveliest of all weeping flowering trees. 5 to 7 ft. size, catalog number 51S4B743, \$2.15 each; 3 for \$5.75. Large 6 to 7 ft., catalog number 51S4A743, blooming age, specimen, \$3.75 each.

RED LEAVED NORWAY MAPLE



The best and most beautiful of all maples. The young leaves are a brilliant carmine-red changing to a rich shade of purple. In late autumn they change again to yellow-bronze. A tree you shouldn't miss for color accent. Catalog number 51S4A706, 3 to 10 ft. tall, \$3.25 each; 2 for \$5.95.



Rose Bud Fl. Crab in Bloom



White Flowering Dogwood

WHITE FLOWERING DOGWOOD

(*Cornus Florida*)—A lovely dwarf tree glorious with its abundance of white flowers in May. In autumn the clean attractive foliage is changed into bright reds and scarlets. Also each autumn the tree is filled with clusters of brilliant red fruits. This worthwhile value tree grows readily and lends an enchantment to any setting. Save on Springhill's new low prices. 2 yr., 1½ ft. size, catalog number 51S4C720, 35¢ each; 3 for 75¢; 12 for \$2.40. 3 yr., 3 ft. size, catalog number 51S4B720, 60¢ each; 3 for \$1.45; 12 for \$5.40. 6 ft. size, catalog number 51S4A720, \$5.00 each.



RED FLOWERING DOGWOOD

(*Cornus Florida Rubra*) A magnificent sight in full bloom. Thousands of large rose red blooms appear before the foliage in spring creating a most warm and cheerful array of brilliance. The compact well formed trees never grow very large, beautiful planted as a specimen or in groups. Save at Springhill's new Low prices. Grafted plants, 1½ ft., catalog number 51S4C719, \$1.25 each; 3 for \$3.45. 3 ft. size, catalog number 51S4B719, \$2.50 each; 3 for \$7.15. 4 to 5 ft. size, catalog number 51S4A719, \$7.00 each.

KEW OR MAIDEN HAIR TREE

(*Ginkgo*)—The oldest tree known to many in ancient writings of Confucius. Beautiful and interesting fan shaped foliage. The graceful and ornamental trees excellent planted as specimen or street trees. Withstands poor soil, smoke, heat and cold, also disease free. 7 ft. size, catalog number 51S4A721, \$4.00 each. Supply limited.

MAGNOLIA SOULANGEANA

(*Saucer Magnolia*)—The deep soft rose color when the large flowers, often 4 to 6 inches across, are fully open. Soulangeana is the showiest of all Magnolia for Northern gardens. Perfectly hardy. The large specimen trees grow to be 20 feet tall and will dominate the entire neighborhood when in full bloom each spring. 1 to 1½ ft. size, catalog number 51S4C722, \$1.25 each. 2 to 2½ ft. size, catalog number 51S4B722, \$3.75 each. 3 to 4 ft., B&E, full of bloom buds, will bloom this Spring, catalog number 51S4A722, \$8.50 each.

Save Half ON



DELUXE BLACK SWEET CORN

Did you ever see it? A new delicacy direct from Mexico. Unsurpassed for tenderness and flavor. This delicious corn grew for us this year when other varieties failed. Not only new but extremely luscious. Buy now at Spring Hill's low price. Pkt. 15¢; 1 lb. 50¢.

TEMPTING SWEET CORN

Plant after danger of frost. Plant seeds in hills three feet apart. Cover with 1 to 2 inches of soil.

GOLDEN CROSS BANTAM—Originated by U. S. D. A. Most disease resistant, vigorous, high yielding, amazingly uniform and of unsurpassed sweetness and quality. Excellent for canning, market gardening and home use. Pkt. 20¢; 1 lb. 55¢.

GOLDEN BANTAM—Sweetest of all extra early sweet corns. Healthful and delicious. Pkt. 15¢; 1 lb. 45¢.

COUNTRY GENTLEMAN—Rich sweet flavored mid-season corn. White kernels are of great depth. Pkt. 15¢; 1 lb. 45¢.

STOWELL'S EVERGREEN—Tender and large kernels. Most popular late variety. Pkt. 15¢; 1 lb. 45¢.

NON-WARRANTY

Every effort is used to have our seeds pure and reliable. However, conditions beyond our control, such as weather conditions make it impossible for us to guarantee our seeds under all conditions. For these reasons, therefore, we the **SPRING HILL NURSERIES CO** give no warranty as to description (including kind, variety and name), quality, productiveness of any seeds we send out and will not be responsible for the crop. Our Liability, in all instances, is limited to the purchase price of the seed.

CHINESE or CELERY CABBAGE

(Chihli)—An early sure-heading variety growing 18 to 20 inches tall and about 4 inches in diameter. Firm, well blanched white heads. Leaves are broad, smooth and fringed at edges. May be served like lettuce or when shredded makes delicious cole slaw. When boiled it is more palatable than ordinary cabbage. In Central states seed should be sown in August. Pkt. 15¢; 1 oz. 65¢.

SQUASH

GREEN HUBBARD—Standard of quality in a winter squash. Shell bluish green, flesh rich, orange-yellow and sweet. Pkt. 10¢; 1 oz. 20¢.

ACORN or TABLE QUEEN—Summer variety and good winter keeper. Shell dark green, deeply ribbed. Flesh orange colored. Pkt. 10¢; 1 oz. 20¢.

PARSLEY

(Champion Moss Curled)—A vigorous compact plant densely crumpled and curled. Excellent for flavoring, contains abundance of vitamins. Sow in early spring, pot plants grow all winter long indoors. Pkt. 10¢; 1 oz. 20¢.

TOP QUALITY, TRIPLE TESTED SEED OF MOST POPULAR

FINEST BEANS

Plant after danger of frost. Cover an inch deep. Sow seed 3 to 4 inches apart in row.

IMPROVED GOLDEN WAX—The best golden beans, stringless, brittle, mature early. Pkt. 15¢; 1 lb. 45¢.

GIANT STRINGLESS GREEN POD—Extra long, heavy producer, medium maturing bean. Pkt. 15¢; 1 lb. 45¢.

IMPROVED BUSH LIMA—Large clusters of tasty lima beans. Very prolific bearer. Pkt. 15¢; 1 lb. 50¢.

POLE LIMA BEANS—Early, high quality and big yields of very delicious beans. Pkt. 15¢; 1 lb. 50¢.

HEALTHFUL BEETS

Sow as early as ground can be prepared. For continuous young beets sow 3 to 4 weeks apart until August. Thin and transplant young plants to 3 inches apart when too thick.

DETROIT DARK RED—The best and most planted variety. Sweet, splendid for canning. Pkt. 10¢; 1 oz. 30¢.

CROSBY'S EGYPTIAN—Superior extra early deep red garden beet. Small tap root. Pkt. 10¢; 1 oz. 30¢.

SWISS CHARD or SPINACH BEET—(Lucullus)—Replaces spinach in hot weather. Tender leaves excellent for cooking. Pkt. 10¢; 1 oz. 25¢.

VITAMIN CARROTS

Sow seed early in spring very shallow. Sow thickly and thin plants; for winter carrots sow in June or July.

IMPROVED DANVERS HALF LONG—Sweet and crisp. Popular for home and market. Pkt. 10¢; 1 oz. 30¢.

IMPROVED CHANTENAY—Very smooth, fine grained, medium size deep orange-red carrot. Pkt. 10¢; 1 oz. 30¢.

SUPERIOR CUCUMBERS

Plant after danger of frost. Sow seed in hills, 6 to 8 seeds per hill, thin to three plants; plant hills three feet apart.

IMPROVED WHITE SPINE—Very smooth and uniform. Choice variety, a great bearer. Pkt. 10¢; 1 oz. 25¢.

CHICAGO PICKLING—A very early heavy producer of quality pickles, uniform size. Pkt. 10¢; 1 oz. 25¢.

IMPROVED LONG GREEN—Best for general purpose; long dark green, have few seeds. Pkt. 10¢; 1 oz. 25¢.

MARVELOUS MUSKMELONS

Plant about middle of May. Six to eight seeds in slightly raised hills, 36 inches apart in alternate rows.

TIP TOP—Tip Top in quality, appearance and productiveness. Fruits large size, slightly oblong. Pkt. 10¢; 1 oz. 25¢.

OHIO SUGAR—Green fleshed sweet fruit. Desirable size, exquisite texture, juicy and tender. Pkt. 10¢; 1 oz. 25¢.

HONEY ROCK—New, early, high quality variety. A premium quality melon for home and market. Pkt. 10¢; 1 oz. 25¢.

YOUR GROCERY BILL

LET THE FRESH VEGETABLE BRIGADE
BRING YOU HEALTHFUL VITAMIN FILLED DINNERS,
CHEAPER AND BETTER THAN MARKET PRODUCE



AND DEPENDABLE VARIETIES

CUTTING LETTUCE

Sow early in Spring. Again in August and September. Fall crops. Plant seed thickly and cover $\frac{1}{4}$ to $\frac{1}{2}$ inch deep.

BLACK SEED SIMPSON—Tender curly leaves forming large loose head. Popular and easy to grow. Pkt. 10¢; 1 oz. 30¢.

SELECT GRAN RAPIDS—Retains its freshness a long time. Popular for market and home gardens. Pkt. 10¢; 1 oz. 30¢.
EARLY PRIZE HEAD—Early, crisp head type. Leaves exceedingly tender and sweet. Pkt. 10¢; 1 oz. 30¢.

DELECTABLE PEAS

Sow early in Spring, best to sow thick. $\frac{1}{2}$ lb. will sow a row 60 feet long. Cover one to two inches deep.

ALASKA—The earliest of all smooth, uniform peas. Grows about 30 inches tall. Pkt. 15¢; 1 lb. 45¢.

LITTLE MARVEL—Big yields of best quality peas for home and market. Vines 15 inches. Pkt. 15¢; 1 lb. 45¢.

GIANT LAXTONIAN—Vines produce extra large peas in large dark green pods. Pkt. 15¢; 1 lb. 45¢.

BEST RADISHES

Plant early in Spring. Sow every ten days for continuous crop. After May, sow summer and winter varieties. Sow seed thick and cover one-fourth to one-half inch.

EARLY SCARLET GLOBE—Early high quality. An old favorite. Pkt. 10¢; 1 oz. 20¢.

WHITE ICICLE—Crisp and delicious. Grows 4 to 5 inches long. Pkt. 10¢; 1 oz. 20¢.

CINCINNATI MARKET—Large, crisp, long red radishes. Popular favorite. Pkt. 10¢; 1 oz. 20¢.

SPINACH

Soak seed in water 24 hours before planting. Sow early as possible. Plant in hills 1 to 1½ ft. apart.

BLOOMSDALE SAVOY—Long standing, long cutting variety with deep, uniformly crumpled leaves. Pkt. 10¢; 1 oz. 20¢.

SPRING HILL'S TURNIPS

Best when sown for Fall crop in July or August. Plant in rows or broadcast. A packet will sow approximately a 50 ft. row.

PURPLE TOP WHITE GLOBE—A beautiful, globe shaped, firm, mild flavored white fleshed turnip. Pkt. 10¢; 1 oz. 25¢.

SPRING HILL'S PARSNIPS

Sow in Spring, thin to two inches apart. Can be stored for winter or left in ground.

HOLLOW CROWN—(Large Sugar)—Most universally grown variety. Roots white, smooth and sugary. Pkt. 10¢; 1 oz. 20¢.

MUSTARD

Sow in early Spring; for Fall crop, sow in August.
FORDHOOK FANCY—Dark green plume-like leaves of mild flavor. Splendid for greens and salads. Pkt. 10¢.



VEGETABLE SPAGHETTI

A very popular new vegetable from China. Plant seed like pumpkins. The vigorous vines provide squash-like fruits that keep well into the winter. Experienced chefs say to pick when well ripened, cook for 20 minutes in boiling water without skinning or cutting, then cut open and season the tasty mass of spaghetti.



1 oz., Pkt. 15c;
 $\frac{1}{4}$ lb., 45c.

Vegetable Spaghetti

Sensational Outdoor Climbing and Novelty Roses

DEPENDABLE AND FASCINATING



Cl. American Beauty

CL. AMERICAN BEAUTY Abundance of beautiful fragrant, double, bright red flowers each spring. Has healthy foliage and strong climbing habit of growth. Extra hardy, reliable and popular variety with the fragrance, form and color of its parent, the famous American Beauty.

PAUL'S SCARLET The parent of BLAZE and winner of Gold Medal as the best climbing rose at the National Society's Exhibition. Striking scarlet color. Large solitary flowers like Climbing American Beauty. Blooms over a long period.

PRIMROSE Flowers are large pure yellow and are produced in abundance, beautiful addition to your garden, being considered the finest of all yellow climbing roses.

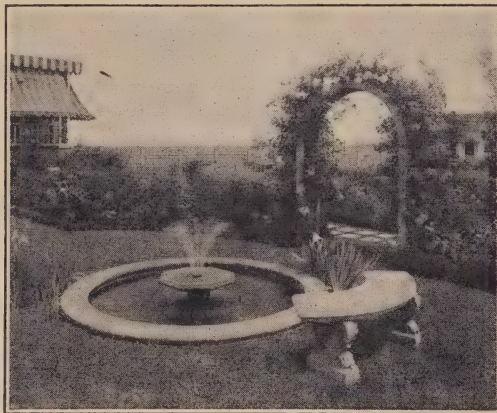
Above 3 Hardy Climbing Roses Your Choice; Best size, 2 yr. No. 1½ field grown, catalog number 54S4A650, 60c each; 3 for \$1.65; 12 for \$6.25.

EVERBLOOMING CLIMBING ROSES

The following are climbing forms of our most popular double H. T. Roses. Everblooming Varieties. Hundreds of bouquets as well as gorgeous outdoor display. To be sure of blooms in cold Northern climates give winter protection.

CLIMBING RED RADIANCE A strong climber with deeper, richer red flowers than Red Radiance. Has all the good qualities of its Parent. 2 yr. No. 1, catalog number 54S-4A655, 65¢ each; 3 for \$1.75.

CLIMBING PINK RADIANCE Lovely light silvery pink on inside with deeper rose shade on outside. Extra large, double blooms all summer. 2 yr., No. 1, catalog number 54S-4A656, 65¢ each; 3 for \$1.75.



A Rose Garden of Charm and Simplicity

CLIMBING SUN-BURST Its coloring is superb. Large, double flowers of rich, golden yellow. Excel for cutting. 2 yr., No. 1, catalog number 54S-4A657, 65¢ each; 3 for \$1.75.

CLIMBING COLUMBIA In the mammoth class; extra large, extra double, bright watermelon pink. A favorite. 2 yr., No. 1, catalog number 54S4A658, 65¢ each; 3 for \$1.75.

Save 50%
See Page 35

INDEX
See Page 3

CLIMBING ETOILE DE HOLLAND Brilliant large, double, deep red profuse blooming. Unsurpassed display. 2 yr., No. 1, catalog number 54S4A659, 65¢ each; 3 for \$1.75.

CL. GOLDEN CHARM This charming golden rose is extremely hardy. Everblooming with hundreds of double, pure yellow blooms. Considered the hardest, most profuse, everblooming, yellow climber. 2 yr., No. 1, catalog number 54S4A-654, 70¢ each; 3 for \$1.90.

CLIMBING AMI QUINARD The black rose. Vigorous branching plants with exquisite large semi-double blooms of deepest maroon. Delightfully perfumed. An excellent climber. 2 yr., No. 1, catalog number 54S4A660, 70¢ each; 3 for \$1.90.

CLIMBING TALISMAN Rich shadings and blendings of scarlet and gold. Beautiful buds and full flowers. Very fragrant. Free blooming all summer like regular Talisman. 2 yr., No. 1, catalog number 54S4A661, 70¢ each; 3 for \$1.90.

BLAZE (Plant No. 10)—Be host to this ever-blooming scarlet beauty. Dazzling in its brilliance, magnificent in its profusion of bloom. Acclaimed the most popular of all new roses. 2 yr., No. 1, catalog number 54S4A662, \$1.25 each; 3 for \$3.45.



Climbing Talisman



Cl. Ami Quinard

Wonderful Everblooming ROSES

PLANT NOW!! GUARANTEED TO BLOOM ALL THIS SUMMER FOR YOU.

AMI QUINARD (The Black Rose)—A deep dark red, being almost as black as Nigrette, the patented roses, but a more prolific bloomer and much larger in size. Order early; supply limited. 2 yr., No. 1, budded field grown plants, catalog number 55S4A664, 75¢ each; 3 for \$2.00; 12 for \$7.65.

NEW RED COLUMBIA A very beautiful cerise deepening as it opens. Lovely buds on very long and nearly thornless stems. Extra large, extra double blooms. Very hardy; vigorous and profuse blooming. 2 yr., No. 1, budded field grown plants, catalog number 55S4A666, 75¢ each; 3 for \$2.00; 12 for \$7.65.

EDITOR MCFARLAND Unsurpassed for vigor, hardiness, abundance of blooms and disease resistance. Bright, deep rose-pink blooms, large and double. Dependable and beautiful variety with long stems, exquisite fragrance. 2 yr., No. 1, budded field grown plants, catalog number 55S4A668, 75¢ each; 3 for \$2.00; 12 for \$7.65.

SOEUR THERESE Most astonishing yellow rose. Long shining golden buds with red markings opening into lovely fragrant rich daffodil yellow flowers. Free blooming with long stems, excellent for cutting. 2 yr., No. 1 budded field grown plants, catalog number 55S4A667, 75¢ each; 3 for \$2.00; 12 for \$7.65.

DIRECTIONS FOR PLANTING AND GROWING ROSES

Follow simple directions in picture and you will succeed with Spring Hill's hardy roses and enjoy an abundance of bloom. A well drained soil is essential. With heavy soils adequate drainage should be provided. Plant below the bud or where branches start. This is usually about 2 inches deeper than they grow in the nursery row. After planting, mound up about 6 inches high around top of plant. Cut off top of rose bushes 1 or 2 inches above top of mound. Do not remove mound for at least ten days. Plant roses in beds 18 to 24 inches apart. Water well when planting. Fertilize with manure or any good commercial fertilizer about two weeks after roses have been planted.

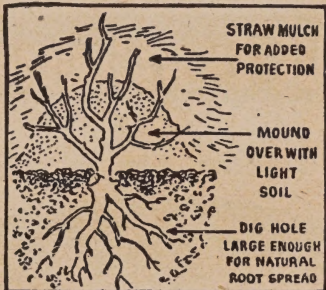
BABY DARLING A new miniature ever-blooming rose that does not grow over 12 inches tall. Lovely soft salmon blooms with spicy fragrance. No plants, catalog number 55S4A673, 55¢ each; 3 for \$1.50.

GOLDEN CHARM The ideal yellow rose. Large pointed buds of rich, old gold open into perfect, double, rich golden yellow blooms. Vigorous strong profuse blooming plants. A new recommended variety. 2 yr., No. 1, budded field grown plants, catalog number 55S4A665, 75¢ each; 3 for \$2.00; 12 for \$7.65.

DEQUESA De PENARANDA Lovely long pointed buds of apricot-orange opening into charming blooms of brilliant copper blended with apricot. Continuous blooming new rose of brilliant colors for your table and garden. 2 yr., No. 1, budded field grown plants, catalog number 55S4A669, 75¢ each; 3 for \$2.00; 12 for \$7.65.

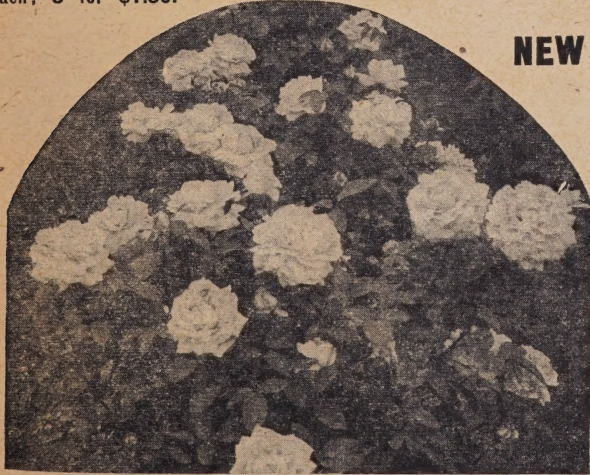


Golden Charm
ROSA ROULETTI (Alpine Midget Rose)—The smallest rose grown. A distinct everblooming novelty to embellish the garden borders and paths or for the rock garden. The entire plant not over 10 inches high covered with fully double pink flowers whose charming beauty excites admiration. Strong pot plants bloom at once and all summer long, catalog number 55S4A670, 50¢ each; 3 for \$1.35.



NEW HARDY ZERO ROSE Glorious and striking with new gracefulness and bright pink flowers. Grootendorst Supreme a new rugosa rose blooms abundantly all summer long and grows equally well in South or North. It is extra hardy and does not freeze. One of our best roses for hedges, borders and landscape plantings. The foliage does not get diseased and drop. The bright double clear soft pink roses are produced in large clusters resembling bouquets of carnations. Excellent for cutting. The most beautiful and dependable of all rugosa roses. 2 yr., No. 1, catalog number 55S4A671, 65¢ each; 3 for \$1.75; 10 for \$5.50.

GOLDEN ROSE OF CHINA (Rosa Hugonis)—A new Bush Rose from China. Spectacular in its exotic beauty. Slender sprays in all directions, gracefully arching beneath loads of bright yellow, single flowers. 2 yr., No. 1, catalog number 55S4A672, 70¢ each; 3 for \$1.95; 10 for \$6.25.



SPRING HILL NURSERIES... Horticulture Specialists & Consultants... Tipp City, O.

EVERBLOOMING ROSE

NEW POINSETTIA

(See color picture front cover.)

This new everblooming glowing scarlet has everything—flashing color, lovely buds, well formed flowers, fascinating fragrance, abundant continuous bloom, strong vigorous healthy erect grower. A rose so lovely, so rugged, so completely satisfying it will be outstanding for years to come.

1. BUD... Graceful long, slender well-formed buds of vivid poinsettia scarlet.
2. FLOWER... Large, beautifully cupped high center form. Holds its intense color in hottest summer sun. Continuous blooms with long stemmed flowers held proudly high.
3. PLANT... Well formed about 2½ ft. tall. Very hardy, vigorous, resistant to disease. Upright free growth. Abundant rich, green, healthy foliage.

Catalog number 56S4A675

\$1.00 each; 3 for \$2.50
12 for \$9.65



Everblooming Poinsettia Rose

6

BEAUTIFUL Everblooming ROSES

\$1.79

CHOICE OF VARIETIES LISTED ON OPPOSITE PAGE

2 yr. seconds, choice of any varieties listed in color on opposite page. Smaller in size but fine 2 year field grown plants. Guaranteed to bloom all this summer for you. Order now and save money.

Choice of any variety listed in color on opposite page. 2 year seconds. A little smaller but guaranteed to bloom this summer.



SUPPLY LIMITED
There is a short crop of Roses. Springhill will have to refund when supply is sold. Order early to avoid disappointment.

PLANT NOW—You will enjoy a gorgeous display of blooms in your garden and a generous supply of beautiful cut flowers this summer. Each variety listed is a tested and proven leader in its color.

- BRIARCLIFF—Large, vivid pink.
- PRES. HOOVER—Red, orange, gold color tones.
- RED RADIANCE—Bright crimson red.
- TALISMAN—Blended scarlet, orange and gold.
- SUNBURST—Lovely clear yellow, a favorite.
- K. A. VICTORIA—Best, large white rose.

- PINK RADIANCE—Silvery pink flowers.
- CONDESA DE SASTAGO—Red with gold tints.
- ROSLYN—Orange and gold superbly combined.
- ETOILE DE HOLLAND—Giant double crimson.
- EDITH NELLIE PERKINS—Silvery rose with gold.
- MRS. P. S. DU PONT—Double, bright gold.

SPRING HILL'S Famous Hardy Everblooming Roses Guaranteed to bloom this summer. GOOD SIZE, 2 yr. seconds. Catalog number 56S4B671.

40¢ each; 3 for \$1.00; 6 for \$1.79; 12 for \$3.25

Beautiful Everblooming Roses

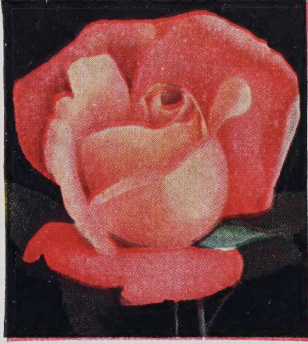
CHOICE 2 YEAR 2nd's... SEE OPPOSITE PAGE

Choice 2 yr. No. 1 budded field grown plants—finest that can be bought at any price. All 12 for \$7.65

2 YR. OLD
75¢ ea.
3 for \$2



Briarcliff



Pres. Hoover



Red Radiance



Talisman



Sunburst



K. A. Victoria



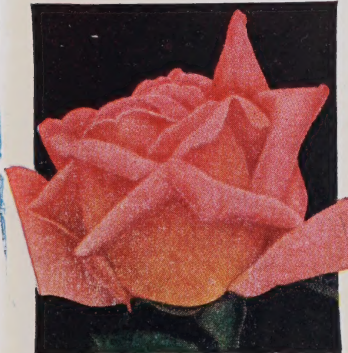
Mrs. Pierre Dupont



Pink Radiance



Condesa de Sastao



Roslyn



Etoile de Holland



Edith Neille Perkins

BLUE
RIBBON
QUALITY

Index
Page 3



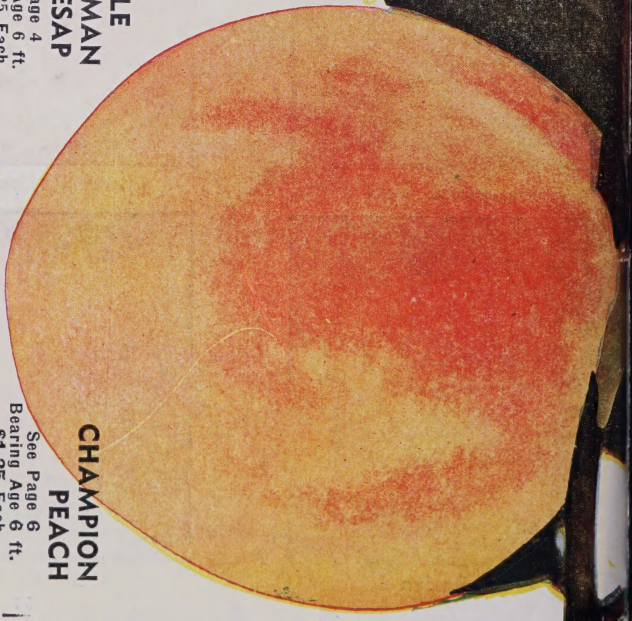
BARTLETT PEAR See Page 9

3 yr. Bearing Age, 6 ft. \$1.65 Each



APPLE
STAYMAN
WINESAP

See Page 4
Bearing Age 6 ft.
3 yr. \$1.25 Each



CHAMPION
PEACH

See Page 6
Bearing Age 6 ft.
\$1.25 Each



Springhill

NURSERIES
TIPP CITY, OHIO



SEC. 562 PLAR
U.S. POSTAGE
PAID
PERMIT NO. 3
TIPP CITY, O.

Library
U.S. Dept of Agricul-
ture
Washington 25, D.C.